

THE PATHWAY TO
Opportunity
2024



Belle Point Ranch
Saturday, April 20 11:30 a.m. Lavaca, Arkansas



RANCH STAFF

Anthony Wood, Ranch Manager
 Madeline Taylor, Cow Herd Coordinator
 Claire Matlock
 Administrative Coordinator
 Julie and Steve French
 Strategic Planning, Marketing & Sales
 Purchasing, AI & ET Matings
 Susan Taylor
 Facilities & Financial Overseer
 Hank Phillips, Land & Facilities Projects
 Audrey Taylor, Sale Prep
 Ethan O'Bar Landen Wood

Belle Point Ranch

Mary Ann McMahon and the McMahon Family
 Mary Lynn & Marvin Holland • Matt & Marie Holland and Roselynn & Glendon • Andrew Holland & Cordy Hook and Asa Edwards
 David & Tammy McMahon • Kerri McMahon • Aaron McMahon (1983-2021)
 Kathleen & Tim McGuire • Allyson McGuire • Kimberly McGuire • Tim & Abby McGuire, Jr.
 Julie & Steve French
 Susan & Rick Taylor • Audrey Taylor • Christine Taylor • Madeline Taylor & Hank Phillips
 Claire & Phillip Matlock and Taylor, Owen, Ethan & Emma
 Belle Point Beverages, Inc. Management Staff & Employees

Cover photos by Morgan Cook, MP Branded • Cattle photos by Megan Hunt • Kerri, David & Tammy photos by Jessica Robinson

VETERINARIANS

Zac Phillips, DVM
 Jonathan Cooper, DVM
 Monroe Moreton, DVM

PHOTO & VIDEO CREW

Jason Smith
 Dee Luther
 Tanner Hite
 Walker Johnson

COLD GOLDEN HOSPITALITY

Terry Harris, Legendary Beertender
 Rick Stickler, Hospitality Chief

In 65 years of owning Angus cattle, we know this business is still all about relationships.

We have yet to figure out how our father talked our mother into holding on to the halter of their first Angus bull long enough for him to take that Polaroid photo. (That's Dave's shadow in the lower right!) It was 1959 and their sixth year of marriage when Kermac Marshall 115 posed with Mary Ann. Angus cattle have been part of our family ever since!

We've been hosting annual sales at Belle Point Ranch for 47 years. While breeding, developing and selling Angus cattle is our business, I'd have to say that building relationships would be our very fulfilling side gig. We thoroughly enjoy Angus people and our family's focus on maintaining good relationships has kept us in this breed for 65 years!

You'll read on page 3 about Angus Foundation's Legacy Sustaining Fund. Our family joined in the George Grant Challenge, a matching fund that will double the impact of the first 1,000 donors. We are asking every American Angus Association member to make a very affordable recurring annual gift of \$150. Once we reach the first thousand donors, we'll keep building this sustaining fund with more and more donors for many years to come. Can you imagine the impact of 10,000 donors giving \$150 every year? I can! How about 20,000 annual gifts of \$150? I believe this dream is totally DOABLE. We just need YOU to join us!

Speaking of big dreams, you may recall that George Grant was the Scotsman who brought Angus to America 150 years ago. But did you know that, in business, he was a silk merchant? When he learned that Prince Albert, Queen Victoria's husband, was near death, he cornered the market to own every yard of black crepe silk on the European continent. British subjects would need to buy black silk for mourning clothes for more than a year! His silk venture made a fortune to finance his dream of establishing a colony of gentlemen-farmers in America. Four Angus bulls were among the first livestock he brought to Victoria, Kansas on May 17, 1873. George Grant's success in business made it possible for him to enjoy his passion – Angus cattle. (Does that sound familiar to you?) His courageous entrepreneurial spirit and creative savvy brought Angus to all of us!

In my video statement (scan the QR code on page 3), you'll hear that we named our parents, David and Mary Ann McMahan, as our "George Grant." They provided us an opportunity to work together in a successful family business and enjoy lifelong relationships in the Angus breed. Who is your George Grant?

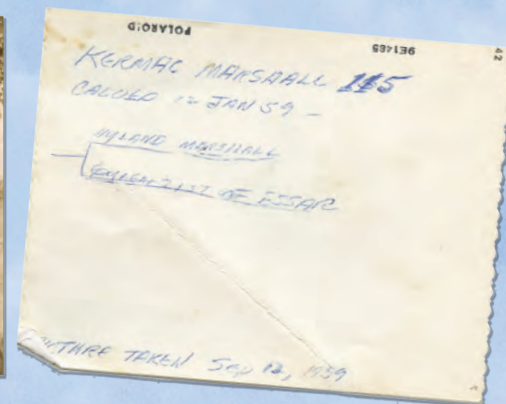
Our friend and neighbor, Jim Moore, told us something touching, and enlightening, when our dad died in 2016. Jim said he got his cow sense from his grandpa, Clint Moore, and his discipline from his dad, JC Moore. He paused, then stated, "And I got my vision from Dave." Thinking about what Jim Moore has achieved within the highest ranks of the CAB® industry makes it clear to me that our most important relationships never end – Jim uses his cow sense, discipline and vision in every decision he makes. Just like the names that extend in a cow's pedigree, we will always "relate" to the people who have made an impact on our lives. Their influence becomes part of who we are and our relationships are woven into the lifework that we are each meant to do. Relationships are expressed in countless ways that extend to others the lessons and examples that we have taken on.

When you think about WHY you got in the Angus business, also remember WHO. Who introduced you to Angus, encouraged you, mentored you, and helped you along the way? You carry their knowledge and their passion as you create new relationships, set goals and work to achieve your success.

We invite you to Belle Point on April 20 to meet new people and make friends, and enjoy being in the Angus business. It's still all about relationships!

Now it's time to ask that very important question: WWDD? (What Would Dave Do) I'm pretty sure he'd raise his paper towel-wrapped 7oz bottle of Bud and say: 'Nuf said, let's sell some Angus cattle!

Julie McMahan French



Come to Belle Point to share our passion for Angus and benefit from the progress we've made in our breeding program.

We also hope you'll meet people and make new Angus friends!

Your time and effort to be with us on April 20 – in person, on the phone, on the internet, or in spirit is truly appreciated!

Our sale facility is arranged to accommodate comfortable table seating for everyone. Look around for seat claim cards in the Mezzanine and take a minute to place cards where your party chooses to sit.

We are serving a unique and tasty lunch that you will be able to enjoy anytime that suits you during the sale. Of course, an array of our many fine beverages will be served and lots of snacks will be available all day "free choice!"

We strive to provide an enjoyable time and environment for all sale guests – if there's anything we can do for you "holler!"

We look forward to building relationships with all the folks who come to Belle Point. You may come as a customer, but you'll leave as friend – as Dave always said, "All because of the Angus cow!"

www.bellepointranch.com

We're here to help you be SUCCESSFUL and ENJOY being in the Angus business. It's still all about relationships!

In fondness and respect, we pause to remember these Angus friends and their families...

Sue Coleman, Modesto, California
1936–2022

Ernie Bingman, Carmi, Illinois
1943–2023

Naomi Johnson, Edgerton, Missouri
1931–2023

Evelyn Edmunds, Clover, South Carolina
1928–2023

Tom Wells, Hamilton, Texas
1953–2023

Gordie Keys, Middleburg, Virginia
1933–2023

Donald Painter, Saint Joseph, Missouri
1926–2023

Dave Nichols, Anita, Iowa
1938–2023

Jarold Callahan, Edmond, Oklahoma
1954–2023

Don Bloom, Westville, Indiana
1945–2024

Cimeron Frost, Tallula, Illinois
1947–2024

Bob Neumeyer, Eagle, Idaho
1930–2024

James Bennett, Red House, Virginia
1933–2024

Jackson Spader, Ballwin, Missouri
2019–2024

Millie Spader, Ballwin, Missouri
2022–2024

Coy Farmer, Prague, Oklahoma
1943–2024

Quintin Smith, Lebanon, Tennessee
1954–2024

Blanford Pierce Jr., Creston, Illinois
1938–2024

We are grateful for the many relationships that bless our lives

All because of the Angus Cow

The Legacy Sustaining Fund is an UNRESTRICTED FUND that will allow the breed's needs to drive the action!

Your monthly or annual contributions, combined with gifts of the same amount from thousands of Legacy Sustainers, will make LASTING IMPACT on the Angus breed.

It's EASY to become a Legacy Sustainer. Your debit or credit card will automatically make the RECURRING CONTRIBUTION you choose: \$12.50 every month or \$150 every year.

ANGUS
Foundation



LEGACY
Sustaining **FUND**



To celebrate George Grant bringing the first Angus bulls from Scotland to America 150 years ago, Angus Foundation has established the Legacy Sustaining Fund. We value the participation of everyone, and so we are asking every member of American Angus Association to donate \$150 each year to build long term, sustaining support for the next 150 years!

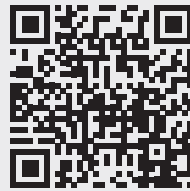
When you make a sustaining gift of \$150 every year, or \$12.50 every month, your support will be earmarked for the greatest need: unrestricted funds to support impactful programming, such as LEAD Conference, Beef Leaders Institute, Angus University and research.

To help launch this long term sustaining fund, a group of loyal leaders of Angus Foundation has created a challenge fund to MATCH DOLLAR-FOR-DOLLAR the first 1,000 annual donors of \$150. The George Grant Challengers are: 44 Farms, The 808 Ranch, Anonymous Donor, Basin Angus Ranch, Belle Point Ranch, Connealy Angus, Daltons on the Sycamore, Pollard Farms and Sydenstricker Genetics.

Who introduced Angus to you, encouraged you, mentored you, influenced your success?
Scan each QR Code to hear these George Grant Challengers tell their stories and why they support the Legacy Sustaining Fund...



Lamar Steiger
The 808 Ranch



Julie McMahon French
Belle Point Ranch



Jerry Connealy
Connealy Angus



Barry Pollard
Pollard Farms



Eddie Sydenstricker
Sydenstricker Genetics

 *The McMahon Family asks you to join the Legacy Sustaining Fund and PAY IT FORWARD by honoring a family member, friend, breeder, neighbor or teacher who helped make your Angus dream a reality. Expand and extend their positive support into the FUTURE!*

JOIN US TODAY!
The **IMPACT** of your contribution will be truly **LIMITLESS!**



Welcome!



Larry Cotton
Ryan Cotton
Mike Gothard
Jerry Crenshaw
Zack Hileman

517-294-0777
706-206-8361
540-894-1055
703-244-4767
540-460-2776



LARRY COTTON



RYAN COTTON



MIKE GOTHARD



JERRY CRENSHAW



ZACK HILEMAN

Welcome Angus Friends,

We welcome everyone to attend the Belle Point Ranch Sale on April 20, 2024 to enjoy great hospitality, beautiful spring weather and an offering of progressive, quality genetics that meet the needs of Angus breeders nationwide. The welcome gates are always open at Belle Point Ranch. The history and tradition here is well known. Sixty-five years ago, David and Mary Ann McMahon began building and developing a successful Angus breeding program, and they have provided the foundation and support for the business to continue with second and third generation family leadership. For decades, breeders from all over the U.S. have joined the McMahon family for this springtime event to evaluate and acquire proven Angus genetics and have a little fun! You know what they've always said about Belle Point: "You won't know if you don't go!"

David McMahon was a highly respected businessman, entrepreneur and cattleman's cattleman. He understood the business and endeavored to prioritize the importance of meeting the needs and demands of the customer, and he instilled those business values in his family. Some reading this letter may not be old enough to have heard a popular song of some years back titled, "I Did It My Way." That song describes the business acumen and philosophy of David McMahon and Belle Point Ranch in the past. David did it his way when making the breeding, marketing and promotion decisions at Belle Point, and he was successful!

The annual Belle Point sale is one of the highlights in the Angus breed each year and we look forward to seeing you at the sale. The McMahon family has always supported so many activities and segments of the Angus business, and they prioritize making genetic and quality improvements in their Angus herd year after year.

As you read this sale book, it will be clear that the McMahon family has succeeded in continuing the Angus legacy they were given, and they have expanded and developed the Belle Point breeding program "their way." Certainly, the solid foundation is here for this generation of the family, and the next, to work together and be successful for many years to come.

The 2024 offering has something for every breeder starting with the female features of leading genetics. The Belle Point program has added unique, quality young donor females over the past couple of years and you will note the offering of a number of select heifer calves and heifer pregnancies from these new maternal lines. These young females and pregnancies are sired by the latest breed leading sires selected for the most important economic traits in the breed. Plus, the groups of bred heifers, females with calves at side, and bred cows are carrying the service of the same sires.

We have had the chance to visit the ranch to inspect the cattle and are excited about the upcoming Belle Point sale! If you have any questions regarding the sale offering or other details regarding the sale, please contact any of us at Cotton & Associates.

If we can be of service in any way, please feel free to give us a call.

**WATCH & BID
ONLINE**



**Videos of ALL Sale Lots
are posted on CCI.Live**

Meet the Management Team



Madeline Taylor

Susan McMahon Taylor

Anthony Wood



HEAD CHEERLEADER
Mary Ann McMahon



Steve French

Julie McMahon French

THE AWAY TEAM

On active duty daily from Michigan!

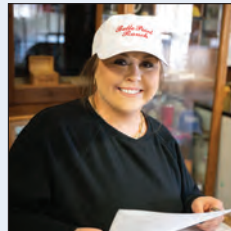
THE HOME TEAM

Working together to execute continual progress!



Landen Wood

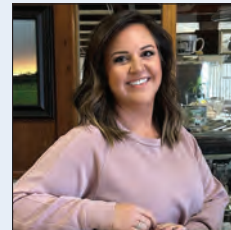
Ethan O'Bar



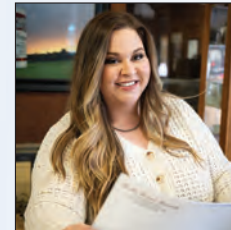
Audrey Taylor



Hank Phillips



Claire Taylor Matlock



Christine Taylor

THE A-TEAM

Family members always "on call" for ranch projects of all kinds!



REPRO COACH

Brent Cooper,
Big Branch-Cooper Cattle,
Reproductive Program
Consultant

REALITY COACH

Jim Moore,
Moore Cattle Company,
Partner and Mentor on
Genomics & CAB® Industry



SPECIAL TEAMS

CREW FOR PHOTOS, VIDEOS & SALE PREPARATIONS

Jason Smith • Dee Luther • Tanner Hite • Walker Johnson
Photographer Megan Hunt • Videographer Charlie Wiemers

"MVP" FAMILY HELP SALE WEEK & SALE DAY

Mary Lynn Holland • Bessie Wood
Kathleen McGuire • Matt Holland • Tim McGuire

We are committed

to accessing the most progressive female lines in the Angus breed to continually build and enhance our cow herd with unique individuals that are structurally correct, functionally efficient, dependably productive, and prudently balanced in the essential traits.

We embrace performance data, genetic evaluation and genomic technology.

First and foremost, we believe that cows and bulls have to be **ABLE** to do their most basic jobs.

That's why we never underestimate the **FUNCTIONAL TRAITS** you can SEE.

For example, for many years we have quoted the veteran AAA Regional Manager Waymon Ashley, and what he said couldn't be more true today: "Give me an EPD for shoulders, and then let's start talkin' about calving ease!"

We believe you've still gotta **LOOK** at 'em to evaluate the essential traits that impact functional efficiency.

Best BRAND NAMES *in the business!*

We value the incredible power of the most current and progressive AI Sires to increase the pace and scope of our genetic improvement.

You will PROFIT from the influence of these leading Angus sires represented in our 2024 offering....

We put high value AI Sires & Herd Sires on our “payroll” with a straightforward job description: Deliver genetic improvement that makes \$\$\$ for us and our customers.

Baldrige Alternative E125 - 18837398
Baldrige Heat Seeker H925 - 19806485
Basin Jameson 1076 - 20071781
Beal Breakthrough - 19829112
Bigk/WSC Iron Horse 025F - 19415015
BJ Surpass - 19774516
BNWZ Bougie 1588 - 20200640
Connealy Clarity - 19555171
Connealy Commerce - 20132642
Connealy Craftsman - 20132505
DB Iconic G95 - 19611994
E&B Wildcat 9402 - 19810163
Ellingson Three Rivers 8062 - 19203618
EZAR Gettysburg 1061 - 20028170

FF Rito Ambitious - 20437882
4 Sons Pacifico - 20215996
HPCA Veracious - 19699322
J Trademark 1037 - 20160403
KA Kindred - 20446645
Poss Deadwood - 19597261
Poss Ratified - 20055483
Poss Rawhide - 19416968
Poss Winchester - 20060473
Riverbend Black Label J1810 - 20342645
SG Salvation - 19559741
Williams Hollywood 700-380 - 19850747
Williams Jonesboro 700-602 - 19850751
Yon Top Cut G730 - 19476453

THANK YOU!

Your practical and up-to-date knowledge, teaching skills and industry insight makes a BIG DIFFERENCE in the success of our AI and ET programs!

Big Branch-Cooper Cattle

Brent & Tracy Cooper, Hackett, Arkansas
501-316-3536 • www.bigbranchbreeders.net



- Arkansas' leading provider of data-driven cattle genetics, AI training & technology
- Well-versed and experienced in the latest synchronization protocols
- Specializing in turn-key breeding projects for large and small farms

Visit with Brent at the sale!

Herd Sires

For many years, Belle Point Ranch has made a significant financial investment in herd sires bred by the leading Angus operations in the U.S., the best brand names!

Our herd sires are not considered by us to be "clean-up bulls." Their role in natural service is essential to our practical management system, and they are very effective ensuring that we produce calf crops that make money.



Connealy Resilient 78L

*78L's DAM IS A MATERNAL SISTER TO CONFIDENCE PLUS

*20132629 • Bred by Connealy Angus
SIRE: Sitz Resilient 10208
DAM: Elba of Conanga 1209 78L, by Quaker Hill Rampage

CED		Birth		Weaning		Yearling		SC		Milk	
EPD	ACC	EPD	ACC	EPD	ACC	EPD	ACC	EPD	ACC	EPD	ACC
+9	.42	+9	.60	+78	.48	+130	.43	+1.14	.41	+30	.34

CW		Marb		RE		FAT		Beef Value	Combined Value
EPD	ACC	EPD	ACC	EPD	ACC	EPD	ACC	\$B	\$C
+57	.44	+95	.40	+99	.40	-.016	.38	+177	+319

Top 2% for HP, Top 3% for \$M, Top 4% for \$W, Top 5% for \$C
Flip to Lots 4–6 to see the Connealy female we invested in with Jim Moore from the same sale we bought Resilient 78L. Good bulls. Good females. GOOD PEOPLE!



44 Workday 2206

*OUTCROSS PEDIGREE, BALANCED EPDS, HERD SIRE "LOOK"

+*20468103 • Bred by 808 LLC
Owned with 44 Farms & 808 LLC
SIRE: 44 Hayday 008
DAM: Seagraves Ruby 6218, by Casino Bomber N33

CED		Birth		Weaning		Yearling		SC		Milk	
EPD	ACC	EPD	ACC	EPD	ACC	EPD	ACC	EPD	ACC	EPD	ACC
+8	.34	+1.1	.51	+83	.43	+147	.37	+1.14	.40	+16	.28

CW		Marb		RE		FAT		Beef Value	Combined Value
EPD	ACC	EPD	ACC	EPD	ACC	EPD	ACC	\$B	\$C
+70	.39	+1.49	.36	+59	.35	+0.18	.31	+206	+322

Top 3% for Marb, Top 4% for \$B, \$G, Top 5% for \$C

We've bought SIX high value herd sires from 44 Farms over the years, but we value our RELATIONSHIP with the 44 people much more than the bulls! Many thanks to Bob McClaren, Doug Slattery, Jarrod Payne and Connie Smith for believing in us and allowing us time to make the right bulls for the innovative 44 System. More bulls are headed your way, Jarrod!



Basin Salvation 3508

* FULL BROTHER TO BASIN BOAZ 3505
\$110,000 TOP-SELLING BULL
2024 BASIN ANGUS RANCH

+*20680178 • Bred by Basin Angus Ranch
SIRE: SG Salvation
DAM: Basin Lucy 8108, by Basin Payweight 1682

CED		Birth		Weaning		Yearling		SC		Milk	
EPD	ACC	EPD	ACC	EPD	ACC	EPD	ACC	EPD	ACC	EPD	ACC
+10	.30	+1.0	.52	+75	.46	+139	.42	+77	.41	+28	.27

CW		Marb		RE		FAT		Beef Value	Combined Value
EPD	ACC	EPD	ACC	EPD	ACC	EPD	ACC	\$B	\$C
+76	.40	+1.01	.36	+92	.36	+0.21	.34	+202	+335

Top 2% \$F, Top 3% for \$C, \$AxH, \$AxJ, Top 5% CW

Flip to page 18 to read about our LONGTIME RELATIONSHIP with the folks at Basin Angus Ranch. We've owned lots of Basin bulls over the years and they do their job well, just like the Stevensons!

Hylite 2678



WHOA!

That's what Steve French said when he spotted Hylite 2678 at the 2023 Bases Loaded Sale.

She is a model Angus female from nose to tail, and her stunning phenotype is just the starting point! The greatest combination female ever bred in the Ward family's Valley Oaks Angus program has numbers that can stack up against the leading young donors in the most progressive programs.

*** Join us as half interest partner or double up and own all of Lot 1.**

Top 1% in FOUR Traits
Top 2% in THREE Traits

Valley Oaks Hylite 2678 – Lot 1

Hylite 2678 was produced by the cornerstone Soaring Eagle of the Ozarks donor Hylite 423.

She is sired by Salvation, the proven and longtime multi-trait leader of the Grimmus Cattle Company roster. The dam of this lead-off female currently ranks Number 10 among proven dams for \$M, and is an outstanding combination calving-ease, growth, \$M and \$C female who combines a proven and productive dam that blends the Marb. sire Prophet and the growth and CW sire Upward. Lot 1 is sired by the proven son of the \$110,000 Discovery, Lombardi 1512. Hylite 1118, a maternal sister to Hylite 2678, was the \$80,000 top-selling bred heifer of the 2022 Soaring Eagle Farms Invitational selling to Ozark Mountain Angus.

1 Valley Oaks Hylite 2678

Birth Date: 9-6-2022 Cow #*20483060 Tattoo: 2678

SG Salvation *19559741 +*Baldrige Alternative E125 Poss Easy Impact 0119
Baldrige Blackbird A030
#*Basin Payweight 1682
*MGR Rita 2145

HD SOK

Williams L Hylite 423 *19310859 +*ECO Lombardi 1512 #*VAR Discovery 2240
+*RB Lady 7125-890-2170
+*GAR Prophet #*Williams Hylite 813-4

CEW	BW	WW	YW	MILK			
+6	+2.2	+90	+147	+29			
CWT	MARB	RE	FAT	\$M	\$W	\$B	\$C
+75	+1.49	+0.98	+0.024	+104	+91	+216	+384

NON-PARENT FEMALES

Top 1% \$C	Top 2% \$AxJ	Top 4% Marb	Top 10% YW	Top 25% CEM
Top 1% \$M	Top 2% \$B	Top 10% \$F	Top 15% Angle	
Top 1% \$W	Top 2% WW	Top 10% CWT	Top 15% HProg	
Top 1% \$AxH	Top 3% \$G	Top 10% Claw	Top 15% REA	

■ All bred on 3/27/24 to sexed KA Kindred (20446645). See sale day update.

GOLDEN OPPORTUNITY

Cotton & Associates:
Lot 1, Hylite 2678 is currently the ONLY non-parent female in the breed with her combination of CED, BW, WW, YW, SC, HP, PAP, CW, Marb., RE, \$M \$W, \$B and \$C.



Connealy Craftsman – Sire of Lot 2B



Poss Winchester – Sire of Lot 2C



FF Rito Ambitious – Sire of Lot 2D

Hylite 2678 Heifer Pregnancies sired by Kindred, Craftsman, Winchester and Ambitious



KA Kindred – AI Service Sire of Lot 1 and Sire of Lot 2A

BUYER'S BONUS

LOT 1 SELLS WITH 6 EMBRYOS:
 2 Heifer Embryos by Kindred
 2 Heifer Embryos by Gettysburg
 2 Unsexed Embryos by Ambitious

Dave always said, "You've still gotta go LOOK at 'em!" and you won't be able to STOP looking at Hylite 2678!

Our friend Dr. Mark Johnson of Oklahoma State is presenting a conference in Stillwater May 22 & 23. Our neighbor/partner Jim Moore and friend/advisor Dr. Jason Rowntree are panelists. Visit www.cattlemenscongress.com/conference for more info.

The website says: "Cattlemen's Conference is a type conference based around building and crafting the right kind of cattle."

Hey Mark, put 2678 in your Power Point! SHE IS THE RIGHT KIND!

2A Kindred x 2678 Heifer Pregnancy

Due Date: 9-29-2024
 Sire: KA Kindred, *20446645
 Dam: Valley Oaks Hylite 2678, +*20483060

CED	BW	WW	YW	MILK			
+10	-.4	+79	+149	+31			
+6	+2.2	+90	+147	+29			
CWT	MARB	RE	FAT	SM	SW	\$B	\$C
+74	+1.83	+1.01	+0.16	+70	+77	+246	+389
+75	+1.49	+0.98	+0.24	+104	+91	+216	+384

DONOR - NON-PARENT FEMALES

Top 1% \$AxH	Top 2% \$AxJ	Top 4% Marb	Top 10% YW	Top 25% CEM
Top 1% \$C	Top 2% \$B	Top 10% \$F	Top 15% Angle	
Top 1% \$M	Top 2% WW	Top 10% CWT	Top 15% HPreg	
Top 1% \$W	Top 3% \$G	Top 10% Claw	Top 15% REA	

2C Winchester x 2678 Heifer Pregnancy

Due Date: 9-29-2024
 Sire: Poss Winchester, +*20060473
 Dam: Valley Oaks Hylite 2678, +*20483060

CED	BW	WW	YW	MILK			
+6	+2.0	+89	+164	+26			
+6	+2.2	+90	+147	+29			
CWT	MARB	RE	FAT	SM	SW	\$B	\$C
+98	+1.33	+1.16	+0.37	+83	+79	+241	+396
+75	+1.49	+0.98	+0.24	+104	+91	+216	+384

DONOR - NON-PARENT FEMALES

Top 1% \$AxH	Top 2% \$AxJ	Top 4% Marb	Top 10% YW	Top 25% CEM
Top 1% \$C	Top 2% \$B	Top 10% \$F	Top 15% Angle	
Top 1% \$M	Top 2% WW	Top 10% CWT	Top 15% HPreg	
Top 1% \$W	Top 3% \$G	Top 10% Claw	Top 15% REA	

2B Craftsman x 2678 Heifer Pregnancy

Due Date: 9-29-2024
 Sire: Connealy Craftsman, *20132505
 Dam: Valley Oaks Hylite 2678, +*20483060

CED	BW	WW	YW	MILK			
+7	+2.1	+78	+137	+41			
+6	+2.2	+90	+147	+29			
CWT	MARB	RE	FAT	SM	SW	\$B	\$C
+61	+1.16	+0.95	+0.17	+108	+85	+184	+347
+75	+1.49	+0.98	+0.24	+104	+91	+216	+384

DONOR - NON-PARENT FEMALES

Top 1% \$AxH	Top 2% \$AxJ	Top 4% Marb	Top 10% YW	Top 25% CEM
Top 1% \$C	Top 2% \$B	Top 10% \$F	Top 15% Angle	
Top 1% \$M	Top 2% WW	Top 10% CWT	Top 15% HPreg	
Top 1% \$W	Top 3% \$G	Top 10% Claw	Top 15% REA	

2D Ambitious x 2678 Heifer Pregnancy

Due Date: 11-30-24
 Sire: FF Rito Ambitious, +*20437882
 Dam: Valley Oaks Hylite 2678, +*20483060

CED	BW	WW	YW	MILK			
+9	+2.8	+89	+156	+21			
+6	+2.2	+90	+147	+29			
CWT	MARB	RE	FAT	SM	SW	\$B	\$C
+85	+2.00	+1.07	-.013	+80	+73	+264	+422
+75	+1.49	+0.98	+0.24	+104	+91	+216	+384

DONOR - NON-PARENT FEMALES

Top 1% \$AxH	Top 2% \$AxJ	Top 4% Marb	Top 10% YW	Top 25% CEM
Top 1% \$C	Top 2% \$B	Top 10% \$F	Top 15% Angle	
Top 1% \$M	Top 2% WW	Top 10% CWT	Top 15% HPreg	
Top 1% \$W	Top 3% \$G	Top 10% Claw	Top 15% REA	

If Hylite 2678 were a Thoroughbred filly her name would be "ONEHECKUVANEGGPRODUCER."

That's the only reason we're willing to share her! We're living in a world in which ONE GREAT FEMALE can build a breeding program, or reroute one that's long established but in need of change. (Been there, done that.) These four heifer pregnancies are sure to put a great female on the ground at your place in late September. The four matings are ON POINT to give everyone an option! Snap 'em up!

We're Feelin' Ambitious!

**CHOICE of
HEIFER
PREGNANCIES**

FF Rito Ambitious embryos produced by these six young donors were implanted February 22 and will be fetal sexed on April 15. We'll announce the HEIFER PREGNANCIES we achieve and offer you ANY ONE you want!



DONOR Spruce Mtn Rita 3021
 Birth Date: 12-23-2022 Cow +*20561998 Tattoo: 3021
 Sire: SG Salvation, *19559741
 Dam: GAR Progress 830, +*16734713

CED	BW	WW	YW	MILK			
+13	+0	+67	+115	+21			
CWT	MARB	RE	FAT	SM	SW	SB	SC
+51	+1.61	+.90	-.016	+71	+64	+210	+343

NON-PARENT FEMALES

Top 1% \$AxH	Top 2% Marb	Top 5% CEM	Top 20% Fat	Top 25% BW
Top 1% \$G	Top 3% \$AxJ	Top 10% CED	Top 20% REA	
Top 2% \$C	Top 3% \$B	Top 20% DMI	Top 25% \$F	

■ Ambitious x 3021 embryos were implanted 2/22 and will be fetal sexed 4/15. Heifer pregnancies achieved will be due 11/24/24.



GAR Progress 830 – Dam of 3021

Rita 3021 is a calving-ease, Marb., and \$C female and direct daughter of the record-selling female produced in the Gardiner Angus Ranch program and cornerstone of the Spruce Mountain Ranch and Express Ranches programs, Progress 830, sired by the longtime leader of the Grimmius Cattle Company roster, Salvation.

DONOR EZAR Rita 3107
 Birth Date: 1-25-2023 Cow +*20661590 Tattoo: 3107
 Sire: EXAR Grenade 9152B, *19358194
 Dam: Paf Rita 7096, *18936330

CED	BW	WW	YW	MILK			
+2	+2.2	+91	+158	+35			
CWT	MARB	RE	FAT	SM	SW	SB	SC
+77	+.85	+1.22	+.011	+71	+88	+182	+307

NON-PARENT FEMALES

Top 1% \$W	Top 2% YW	Top 10% \$C	Top 15% \$F	Top 25% HPreg
Top 2% REA	Top 5% CWT	Top 10% Milk	Top 20% \$AxH	Top 25% RADG
Top 2% WW	Top 10% \$AxJ	Top 15% \$B	Top 20% \$G	

■ Ambitious x 3107 embryos were implanted 2/22 and will be fetal sexed 4/15. Heifer pregnancies achieved will be due 11/24/24.



PAF Rita 7096 – Dam of 3107

Rita 3107 is a growth and RE female and direct daughter of the \$480,000 valued record-selling EZ Angus female and feature of the EZ and Vintage Angus Ranch programs, Rita 7096, sired by the proven FB Genetics and Express Ranches outcross sire, Grenade 8152B.

DONOR EXAR Elba 3684
 Birth Date: 2-2-2023 Cow +*20583403 Tattoo: 3684
 Sire: Basin Jameson 1076, *20071781
 Dam: EXAR Elba 9501, *19353969

CED	BW	WW	YW	MILK			
+10	+1.4	+80	+141	+36			
CWT	MARB	RE	FAT	SM	SW	SB	SC
+71	+1.38	+.60	+.074	+88	+84	+193	+338

NON-PARENT FEMALES

Top 2% \$W	Top 5% Angle	Top 10% CWT	Top 15% \$F	Top 25% \$AxH
Top 3% \$C	Top 5% Claw	Top 10% Marb	Top 15% HPreg	
Top 3% \$M	Top 10% \$B	Top 10% WW	Top 20% CED	
Top 4% Milk	Top 10% \$G	Top 10% YW	Top 20% HS	

■ Ambitious x 3684 embryos were implanted 2/22 and will be fetal sexed 4/15. Heifer pregnancies achieved will be due 11/24/24.



EXAR Closer 3646B – Maternal Brother

Elba 3684 is a growth and RE daughter of the \$650,000 record-selling selection of Riverbend Ranch in 2023 Express Ranches Big Event, Elba 9501, sired by Jameson, the \$600,000 record-seller for Basin Angus Ranch. She is a maternal sister to the \$130,000 EXAR Closer who topped the 2024 Express Spring Ranches Bull Sale, selling to Grimmius Cattle Company.



FF Rito Ambitious – Outcross, Carcass, \$B and \$C Headliner

+*20437882 • SEO Ultra Provider x RMRK Rita 0237, by Thomas Edison 6764
 Owned by Express Angus Ranches, Riverbend Ranch and Spruce Mountain Ranch
 Top 1% – \$C +425, \$B +266, Marb +2.01, \$G +130, \$F +135, \$AxH +287, \$AxJ +281
 Top 2% CW +85
 Top 3% – WW +89, YW +156

FF Rito Ambitious

Cotton & Associates:

Ambitious is the exciting multi-trait feature selected as the \$235,000 top-selling bull of the 2023 Friendship Bull Sale as an outcross, carcass, \$B and \$C headliner. He anchors the Riverbend Ranch, Spruce Mountain Ranch, Nowatzke Cattle Company, Pollard Farms and Express Ranches herd sire rosters and is one of the most talked about bulls of the Fall 2023 Bull Sale season.



Shirley A033



Ceary B343



Miss Craftsman L10

DONOR **Belle Shirley 5010 A033**
 Birth Date: 1-3-2023 Cow +*20566723 Tattoo: A033
 Sire: Connealy Craftsman, *20132505
 Dam: CCC Shirley 5010, *18272020

CED	BW	WW	YW	MILK			
+9	+1.2	+76	+135	+32			
CWT	MARB	RE	FAT	\$M	\$W	\$B	\$C
+55	+0.86	+0.88	+0.026	+98	+79	+159	+304

NON-PARENT FEMALES

Top 1% \$M	Top 15% \$AxJ	Top 15% YW	Top 25% CEM	Top 25% SC
Top 2% HPreg	Top 15% \$C	Top 20% HS	Top 25% Doc	
Top 5% \$W	Top 15% Milk	Top 25% \$AxH	Top 25% RADG	
Top 10% Claw	Top 15% WW	Top 25% \$G	Top 25% REA	

■ Ambitious x A033 embryos were implanted 2/22 and will be fetal sexed 4/15. Heifer pregnancies achieved will be due 11/24/24.



Spruce Mtn Shirley 0559 – Maternal Sister

Shirley 5010 A033 is a balanced-trait daughter of Gobbell G3 Farms and Spruce Mountain Ranch donor, Shirley 5010, sired by the record-selling Connealy Angus sire headlining ST Genetics and Select Sires rosters, Craftsman. She is a maternal sister to the \$160,000 half interest Shirley 0559 owned by Vintage Angus Ranch and AAA Farms.

DONOR **Belle Ceary 11L B343**
 Birth Date: 2-20-2023 Cow *20612677 Tattoo: B343
 Sire: Poss Rawhide, +*19416968
 Dam: Ceary of Conanga 7150 11L, +*20132325

CED	BW	WW	YW	MILK			
+4	+1.8	+90	+152	+23			
CWT	MARB	RE	FAT	\$M	\$W	\$B	\$C
+76	+1.01	+1.10	+0.020	+72	+81	+200	+331

NON-PARENT FEMALES

Top 1% Doc	Top 4% \$C	Top 10% \$B	Top 10% REA
Top 2% \$AxH	Top 4% \$F	Top 10% Angle	Top 15% \$G
Top 2% WW	Top 4% \$W	Top 10% CWT	Top 15% SC
Top 4% \$AxJ	Top 4% YW	Top 10% RADG	Top 25% Marb

■ Ambitious x B343 embryos were implanted 2/22 and will be fetal sexed 4/15. Heifer pregnancies achieved will be due 11/24/24.



Ceary of Conanga 7150 11L – Dam of B343

Ceary 11L B343 is a growth, carcass, \$B and \$C second-generation donor owned in partnership with Gary Willmore, Rigby, ID. She is a daughter of Rawhide produced by the \$75,000 second high-selling female of the 2022 Connealy Angus Sale, Ceary 7150 11L, owned by Belle Point and Moore Cattle Company.

DONOR **Belle Miss Craftsman L10**
 Birth Date: 1-30-2023 Cow +*20593114 Tattoo: L10
 Sire: Connealy Craftsman, *20132505
 Dam: BJ Prophet 5275, +*18531298

CED	BW	WW	YW	MILK			
+8	+2.2	+70	+124	+40			
CWT	MARB	RE	FAT	\$M	\$W	\$B	\$C
+47	+1.11	+0.74	+0.014	+90	+77	+163	+301

NON-PARENT FEMALES

Top 1% Milk	Top 10% HPreg	Top 15% Claw	Top 25% Doc
Top 2% \$M	Top 15% \$C	Top 20% Marb	Top 25% HS
Top 10% \$W	Top 15% \$G	Top 25% \$AxH	Top 25% RADG

■ Ambitious x L10 embryos were implanted 2/22 and will be fetal sexed 4/15. Heifer pregnancies achieved will be due 11/24/24.



BJ Playbook 9240 – Maternal Sister

Miss Craftsman L10 is a \$M headliner and the maternal sister to \$M leader, Surpass, sired by Craftsman. Her maternal sister Playbook 9240, is a cornerstone donor in the Spruce Mountain Ranch and Boyd Beef programs. Playbook 9240 is the dam of the flush brother named 2024 Cattleman's Congress Grand Champion Pen of Three.

Ceary J63



**Top 1% in
FIVE Traits**
**Top 2% in
TWO Traits**

*Cotton & Associates:
Ceary 11L J63 is one of
ONLY two non-parent
females in the breed
with her combination of
CED, BW, WW, YW, SC, HP,
PAP, CW, Marb., RE, \$M,
\$W, \$B and \$C.*

**Ceary J63 has
mass 'n power,
depth 'n shape of
rib, a great hip,
an elegant front,
and she's
super sound.**

**And let's not
forget those
#####!**

Belle Ceary 11L J63 is a direct daughter of the \$75,000 headliner Ceary 11L sired by the now-deceased Clarity, a feature of the ST Genetics roster.

When we debated all the possibilities for the first round matings of Ceary 11L, we decided we wanted to use Connealy bulls on a Connealy female. Clarity, Commerce and Craftsman are on trend, impact producers who complement her phenotype and numbers. Figure in Confidence Plus, and the maternal lines behind each sire, and the Connealy brand name is ALL OVER these matings!

4 Belle Ceary 11L J63
 Birth Date: 10-12-2023 Cow #*20785101 Tattoo: J63
 Cherry Creek Land Grant #KCF Bennett Homestead
 Cherry Crk Eva B27 M
 Connealy Clarity #19555171 *Breshie of Conanga 6988 #*Connealy Confidence Plus
 Belly of Conanga 367
ANGUSGS #*Connealy Confidence Plus #*Connealy Confidence 0100
 Powered by ANGELOFF Elbanna of Conanga 1209
 Ceary of Conanga 7150 11L #**GAR Sure Fire
 #*20132325 *Black Cena of Conanga 7150 Black Cryna of Conanga 5429

CED	BW	WW	YW	MILK			
+0	+3.1	+95	+163	+31			
CWT	MARB	RE	FAT	\$M	\$W	\$B	\$C
+83	+1.40	+1.11	+0.09	+87	+90	+221	+374

NON-PARENT FEMALES

Top 1% \$C	Top 1% \$AxH	Top 3% \$F	Top 4% Doc	Top 15% RADG
Top 1% \$W	Top 2% \$AxJ	Top 3% \$G	Top 5% REA	Top 20% Milk
Top 1% HS	Top 2% \$B	Top 3% CWT	Top 10% Angle	Top 25% HPreg
Top 1% WW	Top 2% YW	Top 4% \$M	Top 10% Marb	

■ 100% sells!

REAL WORLD LESSON #1

Good things come in moderate-sized, easy-keeping, reproductively efficient packages.

Ceary 11L is a genetically unique, phenotypically stunning, functionally efficient Angus female!

We are partners in Ceary of Conanga 7150 11L with our longtime family friends and neighbors Jim & Missy Moore, Moore Cattle Company, winner of the 2017 Certified Angus Beef® Commercial Commitment to Excellence Award. Ceary is their FIRST, and ONLY, REGISTERED Angus female.

Together, we were drawn to Ceary's origin in Connealy's premier maternal herd, her unique pedigree and distinctive EPD profile. She ranks high in production, management and carcass traits and low for mature height, integrating growth and carcass merit in a moderate size. That equates to being cost-effective to maintain, reproductively efficient, economically feasible, hence profitable.

Jim Moore's real world lesson: "If you have the opportunity to get all the growth and carcass quality you want in a size that's manageable, why wouldn't you want that?"

Go SEE Jim Moore's uniform, disciplined, genomics-driven commercial Angus herd while you're at Belle Point. You'll know WHY he is our partner, and genomics mentor, and Ceary is the ONE!



Ceary 11L

Top 1% in \$C, RE
Top 2% in \$B, \$F, \$W, CW
WW and YW, Doc and Angle
***80% for MH**

Ceary of Conanga 7150 11L – Dam of Lot 4, Lots 5A and 5B, Lots 6A and 6B and Lots 7A and 7B

Cotton & Associates: Presenting Ceary 11L's daughter Lot 4, a tremendous fall heifer by Clarity, and three more exciting choices of Ceary 11L progeny – heifers by Commerce and heifer pregnancies by Craftsman, Pacifico, Winchester and Bougie.

This genetically unique and visually appealing female came to Belle Point Ranch and partner Moore Cattle Company, an elite CAB® commercial breeder, as the \$75,000 second high-selling heifer of the 2022 Connealy Angus Sale.

CHOICE of HEIFER CALVES 5A or 5B

5A

ANGUS GS
Powered by NEAGEN

Belle Ceary 11L B64

Birth Date: 2-5-2024
Cow +*20891563
Tattoo: B64

Sire: Connealy Commerce,*20132642
Dam: Ceary of Conanga 7150 11L, +*20132325

CED	BW	WW	YW	MILK
+10	+.5	+80	+135	+22

CWT	MARB	RE	FAT	\$M	\$W	\$B	\$C
+64	+.98	+1.23	-.006	+.96	+.78	+187	+339

NON-PARENT FEMALES

Top 1% \$M	Top 4% \$AxH	Top 10% CEM	Top 15% \$B	Top 15% YW
Top 2% Angle	Top 5% PAP	Top 10% Claw	Top 15% \$F	Top 20% CED
Top 2% REA	Top 10% \$AxJ	Top 10% Doc	Top 15% \$G	Top 20% CWT
Top 3% \$C	Top 10% \$W	Top 10% WW	Top 15% HS	Top 25% Marb



Connealy Commerce
 Sire of Lots 5A and 5B
 ST Genetics: Massive rib shape, big feet, and an unforgettable presence. His dam is described by Jerry Connealy as, "A broody Cade daughter with a perfect udder."

■ Buyer's Bonus: Recipient goes with the chosen heifer calf.

5B

ANGUS GS
Powered by NEAGEN

Belle Ceary 11L B144

Birth Date: 2-9-2024
Cow +*20891566
Tattoo: B144

Sire: Connealy Commerce,*20132642
Dam: Ceary of Conanga 7150 11L, +*20132325

CED	BW	WW	YW	MILK
+8	+2.2	+100	+159	+33

CWT	MARB	RE	FAT	\$M	\$W	\$B	\$C
+68	+1.08	+1.03	+.035	+.92	+102	+171	+314

NON-PARENT FEMALES

Top 1% \$W	Top 2% YW	Top 10% \$C	Top 15% \$G	Top 20% \$B
Top 1% WW	Top 10% \$AxH	Top 10% Milk	Top 15% CWT	Top 20% Marb
Top 2% \$M	Top 10% \$AxJ	Top 10% REA	Top 15% Doc	Top 25% CEM

■ Buyer's Bonus: Recipient goes with the chosen heifer calf.

WWDD? Pretty sure Dave would wanna SWEEP THE RING! But this is strictly an EITHER/OR kinda deal...

Putting their heads together, Steve and Jimmy came up with UP-TO-THE-MINUTE matings for Ceary that sure enough ought to WORK. Guess it's gonna come down to your goals, market and segment of the business to determine which ONE works for you BEST!

Craftsman OR Pacifico. Pick one.
Winchester OR Bougie. Pick one.
Either/Or. That's the way it's gonna go!

CHOICE of HEIFER PREGNANCIES 6A or 6B



Connealy Craftsman



4 Sons Pacifico

6A Craftsman x Ceary 11L Heifer Pregnancy									
Due Date: 9-29-2024									
Sire: Connealy Craftsman, *20132505									
Dam: Ceary of Conanga 7150 11L, +*20132325									
CED	BW	WW	YW	MILK					
+7	+2.1	+78	+137	+41					
+6	+2.4	+86	+148	+27					
CWT	MARB	RE	FAT	SM	SW	SB	SC		
+61	+1.16	+9.5	+0.017	+108	+85	+184	+347		
+76	+94	+1.27	+0.006	+86	+82	+202	+348		
DONOR - PROVEN FEMALES									
Top 1% \$AxH	Top 2% \$B	Top 2% CWT	Top 3% \$M	Top 20% HS					
Top 1% \$AxJ	Top 2% \$F	Top 2% Doc	Top 4% RADG						
Top 1% \$C	Top 2% \$W	Top 2% WW	Top 5% \$G						
Top 1% REA	Top 2% Angle	Top 2% YW	Top 15% Marb						

6B Pacifico x Ceary 11L Heifer Pregnancy									
Due Date: 9-29-2024									
Sire: 4 Sons Pacifico, +*20215996									
Dam: Ceary of Conanga 7150 11L, +*20132325									
CED	BW	WW	YW	MILK					
+6	+3.9	+89	+161	+27					
+6	+2.4	+86	+148	+27					
CWT	MARB	RE	FAT	SM	SW	SB	SC		
+89	+1.46	+1.05	+0.003	+82	+74	+232	+383		
+76	+94	+1.27	+0.006	+86	+82	+202	+348		
DONOR - PROVEN FEMALES									
Top 1% \$AxH	Top 2% \$B	Top 2% CWT	Top 3% \$M	Top 20% HS					
Top 1% \$AxJ	Top 2% \$F	Top 2% Doc	Top 4% RADG						
Top 1% \$C	Top 2% \$W	Top 2% WW	Top 5% \$G						
Top 1% REA	Top 2% Angle	Top 2% YW	Top 15% Marb						



Ceary 11L

CHOICE of HEIFER PREGNANCIES 7A or 7B



Poss Winchester



BNWZ Bougie 1588

7A Winchester x Ceary 11L Heifer Pregnancy									
Due Date: 9-29-2024									
Sire: Poss Winchester, +*20060473									
Dam: Ceary of Conanga 7150 11L, +*20132325									
CED	BW	WW	YW	MILK					
+6	+2.0	+89	+164	+26					
+6	+2.4	+86	+148	+27					
CWT	MARB	RE	FAT	SM	SW	SB	SC		
+98	+1.33	+1.16	+0.037	+83	+79	+241	+396		
+76	+94	+1.27	+0.006	+86	+82	+202	+348		
DONOR - PROVEN FEMALES									
Top 1% \$AxH	Top 2% \$B	Top 2% CWT	Top 3% \$M	Top 20% HS					
Top 1% \$AxJ	Top 2% \$F	Top 2% Doc	Top 4% RADG						
Top 1% \$C	Top 2% \$W	Top 2% WW	Top 5% \$G						
Top 1% REA	Top 2% Angle	Top 2% YW	Top 15% Marb						

7B Bougie x Ceary 11L Heifer Pregnancy									
Due Date: 11-24-24									
Sire: BNWZ Bougie 1588, +*20200640									
Dam: Ceary of Conanga 7150 11L, +*20132325									
CED	BW	WW	YW	MILK					
+10	+3.0	+83	+144	+29					
+6	+2.4	+86	+148	+27					
CWT	MARB	RE	FAT	SM	SW	SB	SC		
+92	+1.32	+1.06	-.007	+73	+73	+232	+374		
+76	+94	+1.27	+0.006	+86	+82	+202	+348		
DONOR - PROVEN FEMALES									
Top 1% \$AxH	Top 2% \$B	Top 2% CWT	Top 3% \$M	Top 20% HS					
Top 1% \$AxJ	Top 2% \$F	Top 2% Doc	Top 4% RADG						
Top 1% \$C	Top 2% \$W	Top 2% WW	Top 5% \$G						
Top 1% REA	Top 2% Angle	Top 2% YW	Top 15% Marb						

Why Ask WWDD?

If you didn't have the OPPORTUNITY to know our father and founder, David McMahon, Sr., our question "WWDD" may be puzzling. So, we hope you will get to know him by appreciating the colorful "Dave Stories" you may hear told by his Angus friends. The stories are AMAZING, and all TRUE!

WWDD means to us that every day in our lives and work, we utilize the lessons he gave and inspiration he still provides. We put into practice his vision, optimism and instant action, his propensity to THINK BIG, his detailed planning and clear spoken words, his innate kindness and unequalled generosity.

Most of all, we want you to know his LOVE for God, his family and friends, and his PASSION for Angus cattle and Angus people!

Lucy 8429 Daughters – Two by Two!

Maternal Sister to EZAR Step Up 9178



Lucy 8429, the powerful and proven dam of Lots 8A through 9 is a direct daughter of the \$240,000 valued Gwinnup Crazy K Ranch and EZ Angus donor Lucy 4261. Maternal siblings to this proven and productive donor include: Lucy 9156, the sensational highlight of the recent AAA Farms Inaugural Female sale; Lucy 8190, the \$200,000 valued half interest selection of High Roller Angus as the top-selling open heifer of the first EZ Angus sale; Step Up 9178, the \$132,500 selection of Edisto Pines Farm as the one-time record-selling EZ herd sire; and Lucy 1436, the \$100,000 top-selling female of the first Audley Farm sale selected by AAA Farms and Spruce Mountain Ranch.

CHOICE of HEIFER CALVES 8A, 8B, 8C, 8D



Basin Jameson – Sire of Lots 8C and 8D



Belle Lucy 8429 L123 – Lot 8C



Belle Lucy 8429 L163 – Lot 8D

Basin Lucy 8429 – Dam of Lots 8A, 8B, 8C and 8D



Belle Lucy 8429 L103
Lot 8A



Poss Rawhide
Sire of Lots 8A and 8B



Belle Lucy 8429 L143
Lot 8B

8A Belle Lucy 8429 L103
 Birth Date: 12-11-2023 Cow +*20891528 Tattoo: L103
 Sire: Poss Rawhide, +*19416968
 Dam: Basin Lucy 8429, +*19128503

CED	BW	WW	YW	MILK			
+8	-.4	+66	+113	+29			
CWT	MARB	RE	FAT	\$M	\$W	\$B	\$C
+38	+1.03	+42	+0.35	+75	+70	+149	+268

NON-PARENT FEMALES
 Top 10% CEM Top 20% \$M Top 25% \$G
 Top 15% DMI Top 20% \$W Top 25% Marb
 Top 15% HPreg Top 20% BW Top 25% PAP

■ If the buyer wishes, we will keep and develop Lot 8A until weaning.

8B Belle Lucy 8429 L143
 Birth Date: 12-21-2023 Cow +*20891530 Tattoo: L143
 Sire: Poss Rawhide, +*19416968
 Dam: Basin Lucy 8429, +*19128503

CED	BW	WW	YW	MILK			
+6	+1.7	+86	+147	+31			
CWT	MARB	RE	FAT	\$M	\$W	\$B	\$C
+73	+1.21	+95	+0.23	+55	+79	+206	+322

NON-PARENT FEMALES
 Top 4% \$AxJ Top 5% \$AxH Top 10% \$G Top 15% Marb Top 20% Milk
 Top 4% \$B Top 5% \$W Top 10% CWT Top 15% PAP
 Top 4% \$F Top 5% RADG Top 10% YW Top 15% REA
 Top 4% WW Top 10% \$C Top 15% CEM Top 20% Angle

■ If the buyer wishes, we will keep and develop Lot 8B until weaning.

8C Belle Lucy 8429 L123
 Birth Date: 12-19-2023 Cow +*20892688 Tattoo: L123
 Sire: Basin Jameson 1076, *20071781
 Dam: Basin Lucy 8429, +*19128503

CED	BW	WW	YW	MILK			
+7	+2.8	+98	+165	+35			
CWT	MARB	RE	FAT	\$M	\$W	\$B	\$C
+77	+1.27	+76	+0.43	+58	+90	+196	+312

NON-PARENT FEMALES
 Top 1% \$W Top 5% CWT Top 10% \$C Top 10% Marb Top 15% Angle
 Top 1% WW Top 10% \$AxH Top 10% \$F Top 10% Milk Top 15% RADG
 Top 1% YW Top 10% \$B Top 10% \$G Top 15% \$AxJ Top 20% PAP

■ If the buyer wishes, we will keep and develop Lot 8C until weaning.

8D Belle Lucy 8429 L163
 Birth Date: 12-21-2023 Cow +*20892690 Tattoo: L163
 Sire: Basin Jameson 1076, *20071781
 Dam: Basin Lucy 8429, +*19128503

CED	BW	WW	YW	MILK			
+2	+1.7	+81	+141	+29			
CWT	MARB	RE	FAT	\$M	\$W	\$B	\$C
+63	+0.94	+82	+0.04	+68	+75	+172	+291

NON-PARENT FEMALES
 Top 2% Angle Top 10% WW Top 20% \$B Top 20% HS Top 25% CWT
 Top 2% Claw Top 10% YW Top 20% \$C Top 25% \$AxH
 Top 10% PAP Top 15% \$W Top 20% \$G Top 25% \$F

■ If the buyer wishes, we will keep and develop Lot 8D until weaning.

*** How 'bout another great mating of Lucy 8429? There's a Heifer Pregnancy by Commerce on the next page!**

Lucy 8429 Heifer Pregnancy by Commerce



9 Commerce x Lucy 8429 Heifer Pregnancy

Due Date: 9-29-2024

Connealy Commerce
*20132642

+*GAR Sunbeam
*Avira of Conanga 814R

#*Basin Paycheck 5249
+*Basin Lucy 4261

#**GAR Sunrise
*GAR Ingenuity 3132
+*Connealy Cade
*Avie of Conanga 624P

#**Basin Payweight 1682
*Basin Lucy 3150
#*EXAR Denver 2002B
+*Basin Lucy 1022

CED	BW	WW	YW	MILK			
+16	+5	+88	+150	+29			
+0	+2.6	+72	+125	+28			
CWT	MARB	RE	FAT	\$M	\$W	\$B	\$C
+67	+0.97	+1.02	+0.23	+77	+86	+182	+313
+57	+1.08	+0.79	+0.22	+58	+62	+179	+290

DONOR - PROVEN FEMALES

Top 2% Angle	Top 10% \$C	Top 15% \$F	Top 15% REA	Top 25% RADG
Top 5% \$AxH	Top 10% \$G	Top 15% CWT	Top 15% WW	
Top 5% \$AxJ	Top 10% Claw	Top 15% HPreg	Top 15% YW	
Top 10% \$B	Top 10% Marb	Top 15% PAP	Top 25% HS	

Maternal Sister to EZAR Step Up 9178



* See 8429's daughters by Rawhide & Jameson on page 15!



Pollard Rita 3522 – Lot 10



HR Rita 9247 – Dam of Lots 10 and 11

We're always in the market for GREAT COWS with GOOD FALL HEIFERS at side!

And, that's why we always like to shop at Pollard Farms – good cattle bred and developed by the best people you'll ever know! We discovered HR Rita 9247 in the Fall 2023 Pollard sale. A \$56,000 valued selection by Barry Pollard from the High Roller program, 9247 is among the oldest daughters of Poss Maverick. We sure like Maverick females so were already very interested in Rita 9247, then we studied the very impressive stats the catalog provided: "9247 recorded a weaning ratio of 114 on her first natural calf and her donor dam balances an average progeny birth ratio of 2 at 91 with an average progeny %IMF ratio of 3 at 107 to do the two most important things that an Angus cow can do – produce calving ease and high marbling genetics progeny." Good cattle from smart people!

10 Pollard Rita 3522
 Birth Date: 8-11-2023 Cow *20716100 Tattoo: 3522

DB Iconic G95 #Musgrave 316 Stunner #*LD Capitalist 316 #MCATL Blackbird 831-1378
 *19611994 *DB Ms Discovery D13 #*VAR Discovery 2240 DB Ms Final Tool 4120

ANGUSGS
 HR Rita 9247 #*Poss Maverick #*Basin Payweight 1682 Poss Pride 5163
 +*19596657 +*VC Rita 5056 #*Rito 9Q13 of Rita 5F56 GHM +GAR Daybreak M721

CED	BW	WW	YW	MILK
+8	+5	+93	+164	+30

CWT	MARB	RE	FAT	\$M	\$W	\$B	\$C
+80	+1.58	+98	+0.008	+53	+86	+230	+351

NON-PARENT FEMALES

Top 1% \$B	Top 1% \$AxJ	Top 2% RADG	Top 3% \$F	Top 15% CEM
Top 1% \$W	Top 2% \$C	Top 2% WW	Top 3% Marb	Top 15% REA
Top 1% \$AxH	Top 2% \$G	Top 2% YW	Top 4% CWT	Top 25% Milk



DB Iconic G95 – Sire of Lot 10

Genex: A unique blend of physical excellence and outstanding EPDs and indexes, Iconic's progeny have exceeded expectations. One of the most exciting Cow Sense & Science sires in GENEX history!

11 Black Label x Rita 9247 Heifer Pregnancy
 Due Date: 9-29-2024

Riverbend Black Label J1810 *SG Salvation #*Baldridge Alternative E125
 +*20342645 +*EWA 6121 of 3128 Sure Fire #*MGR JP Rita 7037
 #*GAR Sure Fire #*EWA 3128 of 9067 Weigh Up

HR Rita 9247 #*Poss Maverick #*Basin Payweight 1682 Poss Pride 5163
 +*19596657 +*VC Rita 5056 #*Rito 9Q13 of Rita 5F56 GHM +GAR Daybreak M721

CED	BW	WW	YW	MILK
+14	+6	+78	+144	+27
+7	+1	+81	+147	+29

CWT	MARB	RE	FAT	\$M	\$W	\$B	\$C
+83	+1.10	+95	+0.003	+60	+70	+210	+332
+71	+1.00	+1.26	+0.005	+36	+74	+210	+308

DONOR - PROVEN FEMALES

Top 1% \$AxH	Top 1% \$F	Top 3% \$C	Top 4% \$G	Top 10% Marb
Top 1% \$AxJ	Top 1% RADG	Top 3% CWT	Top 4% WW	Top 25% BW
Top 1% \$B	Top 1% REA	Top 3% YW	Top 10% \$W	



Riverbend Black Label J1810 – Sire of Lot 11

Select Sires: Modern EPD profile – from Calving Ease to Carcass. Stouter than average, Black Label is impressive in his look, muscle shape and his combination of athleticism and structural correctness. His unique pedigree reads like a who's who of sires who have left their mark on the breed.

We were IMPRESSED when this pair got off the truck from Pollard Farms – WOWZA!

9247 is definitely a GREAT COW and her daughter 3522 is a POWER COW in Development!

Rita 9247 was appointed to a LEADERSHIP ROLE in our Donor Dept. so we're offering you the opportunity to hire her daughters – Lots 10 & 11!

Cotton & Associates:

Lot 10, Rita 3522, is a powerful low-birth, growth, Marb., \$B and \$C combination female produced by a new donor female at Belle Point, Rita 9247, and sired by the longtime leader of the Genex roster, Iconic.

Lot 11 is an outstanding heifer pregnancy from a new Rita family in the Belle Point Ranch embryo program, Rita 9247.

9247's mating to the \$150,000 record-selling bull of the 2023 Riverbend Ranch Bull Sale who is a highlight of the Select Sires roster will deliver a true herd builder female – deluxe!

Heather Bloom's Daughters by Rawhide and Commerce



Basin Heather Bloom 1459 – Dam of Lots 12A, 12B and 13

Cotton & Associates: Heather Bloom 1459 stems from one of the top families ever developed in the Basin Angus program. She combines the female sire Deposit 6249 with a tremendous producing daughter of the 44 Farms and Vintage Angus female sire Discovery.

We really like to “shop” with Basin Angus Ranch...

We've been customers of Doug and Sharon Stevenson's Basin Angus Ranch in Montana for many years. It's a business relationship built on shared values and respect (cows actually come in third) and that's what makes Basin a frequent stop on our cattle shopping expeditions.

At the Basin Sale in 2010, Dave filled his shopping cart (and Randy Lathrop's trucks) with 90 heifers. So, we have a little experience with the power, predictability and profitability that Basin female genetics can deliver! We've also bought great herd sires from Basin – see the elite Salvation son who came on board in March on page 7.

These days, you don't really need to buy NINETY FEMALES to create a new base. For us, it's now about buying the RIGHT ONE – a genetically unique female that can be mated many different ways to navigate the deep water of the fast-moving river that is the Angus breed.

In Bases Loaded 2020 in Denver, we discovered Basin Lucy 8429 and purchased her to fill that unique slot. What a superb female she has been for us! Her offspring are featured on pages 15 and 16.

In the 2022 Bases Loaded Sale in OKC, we spotted Heather Bloom 1459 and chose her to add another unique family to our donor roster. Heather Bloom's maternal brother, Basin Paycheck 8016, was top-seller of the 2019 Basin Bull Sale to EZ Angus Ranch in California. Another maternal brother, Basin High Noon 9079, served both Express Ranches and Basin as a herd sire. You're really gonna like Heather Bloom's “power cow” daughters by Rawhide, and her Commerce heifer due in September is gonna be a tremendous female.



Belle Heather Bloom K193 – Lot 12A



Belle Heather Bloom K303 – Lot 12B

12A Belle Heather Bloom K193

Birth Date: 11-18-2023 Cow #20840187 Tattoo: K193

Poss Rawhide #*Basin Payweight 1682
 +*19416968 *Poss Blueblood 6502 Poss Pride 5163
 Poss Easy Impact 0119
 Poss Blueblood 920



*Basin Deposit 6249 #*Basin Advance 3134
 Basin Heather Bloom 1459 #*Basin Lucy 4288
 *20103007 *Basin Heather Bloom 6235 #*VAR Discovery 2240
 *Basin Heather Bloom 4213

CED	BW	WW	YW	MILK			
+11	+1.6	+97	+163	+25			
CWT	MARB	RE	FAT	\$M	\$W	\$B	\$C
+87	+.91	+.79	+.057	+58	+83	+194	+310

NON-PARENT FEMALES

Top 1% CEM	Top 2% \$F	Top 3% \$W	Top 10% \$C	Top 15% CED
Top 1% Doc	Top 2% CWT	Top 10% \$AxJ	Top 10% RADG	Top 20% Angle
Top 1% WW	Top 2% YW	Top 10% \$B	Top 15% \$AxH	

CHOICE of HEIFER CALVES 12A or 12B

Rawhide x Heather Bloom Daughters



Poss Rawhide – Sire of Lots 12A and 12B

ST Genetics: Rawhide is consistently generating big-bodied progeny who offer a broody look, with potent genetic merit and outstanding salability. Many would agree he has matured into one of the most in demand bulls within the Angus breed. His outstanding progeny data includes over 1,300 BW records ratioing 99 for WW, 101 for YW, and have breeders circling back to use this leading sire.

12B Belle Heather Bloom K303

Birth Date: 11-22-2023 Cow #20840188 Tattoo: K303

Poss Rawhide #*Basin Payweight 1682
 +*19416968 *Poss Blueblood 6502 Poss Pride 5163
 Poss Easy Impact 0119
 Poss Blueblood 920



*Basin Deposit 6249 #*Basin Advance 3134
 Basin Heather Bloom 1459 #*Basin Lucy 4288
 *20103007 *Basin Heather Bloom 6235 #*VAR Discovery 2240
 *Basin Heather Bloom 4213

CED	BW	WW	YW	MILK			
+10	±.1	+86	+140	+30			
CWT	MARB	RE	FAT	\$M	\$W	\$B	\$C
+69	+1.12	+.85	+.020	+70	+88	+191	+318

NON-PARENT FEMALES

Top 1% \$W	Top 10% \$AxJ	Top 10% YW	Top 20% Marb	Top 25% PAP
Top 4% \$AxH	Top 10% \$B	Top 15% \$G	Top 25% Angle	Top 25% REA
Top 4% WW	Top 10% \$C	Top 15% CWT	Top 25% BW	
Top 5% CEM	Top 10% \$F	Top 20% CED	Top 25% Milk	

Commerce x Heather Bloom Heifer Pregnancy



13 Commerce x 1459 Heifer Pregnancy

Due Date: 9-29-2024

Connealy Commerce #*GAR Sunbeam
 *20132642 *Avira of Conanga 814R #*GAR Sunrise
 *Connealy Cade
 *Avie of Conanga 624P

*Basin Deposit 6249 #*Basin Advance 3134
 Basin Heather Bloom 1459 #*Basin Lucy 4288
 *20103007 *Basin Heather Bloom 6235 #*VAR Discovery 2240
 *Basin Heather Bloom 4213

CED	BW	WW	YW	MILK			
+16	+.5	+88	+150	+29			
+10	+.4	+85	+144	+30			
CWT	MARB	RE	FAT	\$M	\$W	\$B	\$C
+67	+.97	+1.02	+.023	+77	+86	+182	+313
+73	+1.20	+.95	+.003	+78	+84	+201	+339

DONOR - PROVEN FEMALES

Top 2% \$W	Top 3% CEM	Top 10% \$G	Top 15% Angle	Top 20% Claw
Top 3% \$AxH	Top 5% WW	Top 10% CWT	Top 15% Marb	Top 20% Doc
Top 3% \$AxJ	Top 10% \$B	Top 10% YW	Top 15% REA	Top 25% HPreg
Top 3% \$C	Top 10% \$F	Top 15% \$M	Top 20% CED	Top 25% Milk

Blackcap 8282



Mill Brae CP Blackcap 8282 – Dam of Lot 14, 15A and 15B

8282's Daughters by Trademark and Gettysburg

Lot 14



Belle Blackcap 8282 K203 – Lot 14

Identified's only MATERNAL SISTER by Confidence Plus



J Trademark 1037 – Sire of Lot 14

Genex: Trademark has a unique combination of an outcross pedigree with a high-quality phenotype and an incredible number profile. He has tremendous performance and extra muscle shape in a bigger, longer, more extended package. Low birth weight and calving-ease with added performance to rank in the top for YW. Plus, elite HP, Claw and Angle and ranks in the top percents for \$M and \$C.

14

Belle Blackcap 8282 K203

Birth Date: 11-18-2023 Cow #*20841711 Tattoo: K203

*Sitz Resilient 10208

#*Sitz Stellar 726D

J Trademark 1037
*20160403

Mill Brae Iden Georgina 4086

*Sitz Miss Burgess 1856

#*Koupals B&B Identity

+Mill Brae FA Georgina 0237

ANGUSGS
Powered by REGGEN

#*Connealy Confidence Plus

#*Connealy Confidence 0100

Mill Brae CP Blackcap 8282

*19238038

*Mill Brae Pro Blackcap 1092

Elbanna of Conanga 1209

#*+GAR-EGL Protege

Mill Brae FL Blackcap 5002

CED	BW	WW	YW	MILK			
+10	-1.1	+76	+124	+30			
CWT	MARB	RE	FAT	SM	SW	SB	SC
+58	+.80	+.70	+.082	+96	+86	+155	+300

NON-PARENT FEMALES

Top 1% \$M	Top 15% \$C	Top 15% WW	Top 20% Claw	Top 25% Milk
Top 1% \$W	Top 15% Angle	Top 20% \$AxH	Top 25% \$F	
Top 10% BW	Top 15% HPreg	Top 20% CED	Top 25% CEM	

■ If the buyer wishes, we will keep and develop Lot 14 until weaning.

Once again, "different" is what we were looking for when Steve discovered the maternal sister to Mill Brae Identified – the ONLY ONE by Confidence Plus – in the Mill Brae herd dispersal. You're gonna love LOOKING at these 8282 heifer calves, and studying them. Talk about different – and in a GOOD WAY! The dam of this November Trademark and the Gettysburg Februarys steps up to every mating and delivers. She makes all of us say, "there's just something about that 8282 cow."

There's just something about the 8282 daughters...

**CHOICE of
HEIFER CALVES
15A or 15B**

15A Belle Blackcap 8282 B14

Birth Date: 2-1-2024 Cow +*20894197 Tattoo: B14

EZAR Gettysburg 1061 #*WAR Cavalry B063 Z044 #*Connealy Cavalry 1149
+*20028170 *Paf Rita 7096 War CC&7 Z044 X029
#*Connealy Confidence Plus
*Paf Rita 5091

ANGUSGS
Powered by NCGEN

#*Connealy Confidence Plus #*Connealy Confidence 0100
Mill Brae CP Blackcap 8282 Elbanna of Conanga 1209
*19238038 *Mill Brae Pro Blackcap 1092 #*GAR-EGL Protege
Mill Brae FL Blackcap 5002

CED	BW	WW	YW	MILK			
+8	+1.6	+90	+164	+32			
CWT	MARB	RE	FAT	SM	SW	SB	SC
+72	+1.10	+1.34	+0.32	+85	+90	+196	+339

NON-PARENT FEMALES

Top 1% \$W	Top 3% \$AxJ	Top 5% \$AxH	Top 10% \$G	Top 20% Marb
Top 1% REA	Top 3% \$C	Top 5% \$M	Top 10% CEM	
Top 2% WW	Top 3% Angle	Top 10% \$B	Top 10% CWT	
Top 2% YW	Top 4% RADG	Top 10% \$F	Top 15% Milk	

■ Lot 15A was too young for a photo in early March. See her video by scanning the QR code or visit our sale page on CCI.Live.

**BUYER'S
BONUS**

Take your choice of
February heifer calves,
and take her recipient too!

15B Belle Blackcap 8282 B44

Birth Date: 2-4-2024 Cow +*20894200 Tattoo: B44

EZAR Gettysburg 1061 #*WAR Cavalry B063 Z044 #*Connealy Cavalry 1149
+*20028170 *Paf Rita 7096 War CC&7 Z044 X029
#*Connealy Confidence Plus
*Paf Rita 5091

ANGUSGS
Powered by NCGEN

#*Connealy Confidence Plus #*Connealy Confidence 0100
Mill Brae CP Blackcap 8282 Elbanna of Conanga 1209
*19238038 *Mill Brae Pro Blackcap 1092 #*GAR-EGL Protege
Mill Brae FL Blackcap 5002

CED	BW	WW	YW	MILK			
+7	+2.0	+84	+160	+30			
CWT	MARB	RE	FAT	SM	SW	SB	SC
+77	+1.18	+1.08	+0.06	+80	+80	+214	+358

NON-PARENT FEMALES

Top 1% \$C	Top 3% \$AxH	Top 5% CEM	Top 10% REA	Top 25% Milk
Top 1% RADG	Top 3% \$B	Top 5% CWT	Top 10% WW	
Top 2% \$F	Top 4% \$W	Top 10% \$G	Top 15% Angle	
Top 2% YW	Top 5% \$AxJ	Top 10% \$M	Top 15% Marb	

■ Lot 15B was too young for a photo in early March. See her video by scanning the QR code or visit our sale page on CCI.Live.



EZAR Gettysburg 1061 – Sire of Lots 15A and 15B

Select Sires: Gettysburg is an impressive phenotype with power and performance. He is unmatched for his genetic combination of growth and carcass merit and ranks in the elite 1% for WW, YW, \$B and \$C. He excels in length of body and internal dimension. A wide base and long level hip, he will catch your eye from any angle. Gettysburg is a power bull with all the perks of phenotype, growth and carcass.

Cotton & Associates:

Lots 14, 15A and 15B are a daughter by Trademark 1037 and choice of heifer calves by the Blackstone Cattle Company, EZ and Select Sires roster member, Gettysburg from the powerful and proven Belle Point Ranch donor, Blackcap 8282.

Maternal sisters to Lots 14, 15A and 15B include: Blackcap 8282 A362, the \$40,000 selection of Pollard Farms in the 2023 Spruce Mountain Ranch Sale; Blackcap 8282 B82 selected by Sydenstricker Genetics and Blackcap 8282 K192 selling to Ingram Angus, a heifer pregnancy to Four Sons Farm and Blackcap 8282 A371 selected by Gabriel Ranch in the 2022 Belle Point Sale.



Scan QR Code
to VIEW all
Sale Videos



Watch LIVE Sale Preview
"Sortin' the Sale Pens"
Friday, April 19 – 6 pm CST



Tune-in to Facebook@BellePointRanch

Hosted by Kevin Wendt with Ryan Cotton and Steve French in a FUN "talk show" format. If you're unable to watch LIVE, the recording is posted on Facebook for later viewing.

Thanks to Morgan Cook, MP Branded, for professionally producing our Live Preview Show. Visit her site: mpbranded.com to see all of her services!



C.J. Brown

Meet the artist at
the Belle Point Sale!

"From the time I was a little girl growing up on a farm in Illinois, I developed a deep passion for the people, animals, and landscape of our rural lifestyle. As a livestock illustrator and artist, specializing in the beef animal, I've come to appreciate all of the breeds of cattle. Each breed is an artwork in itself and has its place. Each animal is an important part of the agriculture industry, and it is my privilege to document and immortalize all species of livestock on paper."



You'll enjoy seeing this show of Cindy's vividly detailed watercolors of cattle, barns and stunning landscapes. Visit her online: cjbrownstudios.com

Gotta Go LOOK at the Daughters of Identified A97. Two Donor Prospects UNIQUELY Created to Make an IMPACT!

Lot 16A



Belle Rita A97 K333 – Lot 16A

16A Belle Rita A97 K333

Birth Date: 11-25-2023 Cow #*20828501 Tattoo: K333

SG Salvation
*19559741

*Baldridge Alternative E125
*MGR JP Rita 7037

ANGUSGS
Powered by NECEAN

#*Mill Brae Identified 4031
*Mill Brae Pro Blackcap 1092

CAM Identified A97
*19630685

*Koupals B&B Identity
*GAR Prophet N1225
*GAR Daybreak 252

CED		BW		WW		YW		MILK	
+13		+1.1		+85		+145		+15	
CWT	MARB	RE	FAT	SM	SW	SB	SC		
+76	+1.30	+1.26	+0.12	+59	+69	+217	+340		

NON-PARENT FEMALES			
Top 1% \$AxH	Top 2% REA	Top 5% WW	Top 10% Marb
Top 1% \$AxJ	Top 3% \$C	Top 10% Angle	Top 10% YW
Top 1% CEM	Top 4% \$F	Top 10% CED	Top 15% Claw
Top 2% \$B	Top 4% \$G	Top 10% CWT	Top 20% \$W

■ If the buyer wishes, we will keep and develop Lot 16A until weaning.

Salvation x
Identified A97

Craftsman x
Identified A97

16B Belle Rita A97 I373

Birth Date: 9-20-2023 Cow #*20748375 Tattoo: I373

Connealy Craftsman
*20132505

*Sitz Resilient 10208
#*Black Cathy of Conanga 8521

ANGUSGS
Powered by NECEAN

#*Mill Brae Identified 4031
*Mill Brae Pro Blackcap 1092

CAM Identified A97
*19630685

#*Sitz Stellar 726D
*Sitz Miss Burgess 1856
*Connealy Niobrara 5451
Black Carla of Conanga 450

*Koupals B&B Identity
*GAR Prophet N1225
*GAR Daybreak 252

CED		BW		WW		YW		MILK	
+12		+.5		+97		+161		+37	
CWT	MARB	RE	FAT	SM	SW	SB	SC		
+72	+1.01	+1.22	+0.11	+81	+101	+182	+317		

NON-PARENT FEMALES				
Top 1% \$W	Top 3% Milk	Top 10% \$M	Top 15% \$G	Top 25% Marb
Top 1% WW	Top 4% \$AxJ	Top 10% CED	Top 20% \$F	
Top 2% REA	Top 10% \$AxH	Top 10% CWT	Top 25% Angle	
Top 2% YW	Top 10% \$C	Top 15% \$B	Top 25% HPreg	

■ Lot 16B is on her own and ready to go April 20!



Lot 16B

Belle Rita A97 I373 – Lot 16B



CAM Identified A97 – Dam of Lots 16A and 16B

A97



SG Salvation – Sire of Lot 16A



Connealy Craftsman – Sire of Lot 16B

Cotton & Associates:

Featuring two daughters of the powerful and proven Belle Point donor Identified A97. Lot 16A is sired by the \$50,000 headliner of the Grimmus Cattle Company roster Salvation. Lot 16B is by the record-selling ST Genetics and Select Sires roster member Craftsman.

The dam of these donor prospects, CAM Identified A97, is a direct daughter of the Riverbend Ranch donor Prophet N1225. She is sired by the proven phenotype sire, Identified.



E&B Wildcat 9402 – Sire of Lot 17



Sankey Ruth 934 – Dam of Lot 17



**Top 1% in
\$C, \$B and
\$AxH
Top 2% in
\$F and CED**

17 Belle Ruth 934 L113

Birth Date: 12-14-2023 Cow #*20892590 Tattoo: L113

E&B Wildcat 9402
*19810163

+*GAR Discovery 6737H

#*VAR Discovery 2240

*GAR Ingenuity 3132

E&B Lady Plus 643

#*Connealy Confidence Plus

#E&B Lady Credence 190

ANGUSGS
Powered by MDS&P

#*Connealy Confidence Plus

#*Connealy Confidence 0100

Elbanna of Conanga 1209

Sankey Ruth 934

*Ruth SS D180

#*MAR Innovation 251

Ruth SS Z63

CED	BW	WW	YW	MILK			
+15	-.6	+70	+125	+29			
CWT	MARB	RE	FAT	\$M	\$W	\$B	\$C
+74	+1.33	+1.10	+0.37	+83	+73	+225	+375

NON-PARENT FEMALES				
Top 1% \$B	Top 2% CED	Top 10% CWT	Top 15% \$W	Top 15% RADG
Top 1% \$C	Top 3% \$AxJ	Top 10% HPreg	Top 15% BW	Top 25% DMI
Top 1% \$AxH	Top 5% \$G	Top 10% Marb	Top 15% CEM	
Top 2% \$F	Top 10% \$M	Top 10% REA	Top 15% Claw	

■ Retaining half embryo interest. If the buyer wishes, we will keep and develop Lot 17 until weaning.

Cotton & Associates:

Lot 17 is currently the ONLY non-parent female in the breed with her combination of CED, BW, WW, YW, SC, HP, PAP, CW, Marb., RE, \$M, \$W, \$B and \$C. She is an exciting combination prospect produced by the proven headliner of the Sankey Angus, Lisonbee Angus and Betts Angus joint embryo programs Ruby 934 and sired by the \$50,000 headliner of the Genex roster Wildcat 9402.

Lookie Here!

**Wildcat
Daughter
of Sankey
Ruth 934**

**L113's TWO
Maternal Sisters
by Craftsman
sold for \$110,000
to C5 Angus and
Katie Colin Farm,
and \$82,000 to
Linz Heritage Angus,
Pine View Angus
and Reverse
Rocking R Ranch!**

Invest in a show heifer with Look + Data. WINNING is just the BEGINNING!



Belle Saras Dream 9434 B243 – Lot 18

18 Belle Saras Dream 9434 B243

Birth Date: 2-19-2023 Cow *20626813 Tattoo: B243
 #*Musgrave 316 Stunner #+*LD Capitalist 316
 DB Iconic G95 #MCATL Blackbird 831-1378
 *19611994 *DB Ms Discovery D13 #*VAR Discovery 2240
 DB Ms Final Tool 4120
ANGUSGS
 #*SAC Peak Value BN45 #*44/Blackstone Peak Value
 Silveiras Saras Dream 9434 #*Silveiras Elba 4057
 *19551831 *Silveiras Saras Dream 7407 #*SydGen Exceed 3223
 #*DCC Saras Dream C08

CED	BW	WW	YW	MILK			
+8	+8	+67	+113	+31			
CWT	MARB	RE	FAT	SM	SW	SB	SC
+62	+1.23	+90	+0.21	+65	+72	+206	+332

NON-PARENT FEMALES				
Top 4% \$B	Top 5% DMI	Top 15% \$W	Top 20% REA	Top 25% CWT
Top 4% \$C	Top 10% \$AxH	Top 15% Marb	Top 20% SC	Top 25% RADG
Top 5% \$F	Top 10% \$G	Top 20% Milk	Top 25% \$AxJ	

■ We'll get Lot 18 transferred to make the NJAS ownership deadline!



A sensational PGS prospect from one of the top show heifer producing families in the Angus breed sired by the multi-trait leader of the Genex roster Iconic.



19 Belle Sandy 1595 L023

Birth Date: 12-20-2023 Cow *20835614 Tattoo: L023
 #*Musgrave 316 Stunner #+*LD Capitalist 316
 DB Iconic G95 #MCATL Blackbird 831-1378
 *19611994 *DB Ms Discovery D13 #*VAR Discovery 2240
 DB Ms Final Tool 4120
ANGUSGS
 #*Deer Valley Growth Fund #+*Basin Payweight 1682
 DPL Sandy 1595 #*Deer Valley Rita 36113
 *20305175 #*DPL Sandy 3105 #*Silveiras Style 9303
 #*KNC Cabin Creek Sandy 804

CED	BW	WW	YW	MILK			
+2	+3.8	+93	+159	+31			
CWT	MARB	RE	FAT	SM	SW	SB	SC
+79	+1.22	+75	+0.25	+53	+77	+202	+315

NON-PARENT FEMALES				
Top 2% WW	Top 5% \$B	Top 10% \$G	Top 10% SC	Top 20% Claw
Top 2% YW	Top 5% \$F	Top 10% \$W	Top 15% Marb	Top 20% Milk
Top 4% CWT	Top 10% \$C	Top 10% Angle	Top 15% RADG	

■ Retaining half embryo interest. We'll get Lot 19 transferred to make the NJAS ownership deadline!



A powerful growth and Marb., PGS prospect from the proven show heifer producing Sandy family. She combines the Genex leader Iconic with a dam who blends the breed registration leader Growth Fund with a daughter of the sire of champions, Style 9303. Her dam won the NJAA PGS Show in 2022!



DPL Sandy 1595 – Dam of Lot 19
 2022 NJAS Grand Champion PGS Female



Belle Sandy 1595 L023 – Lot 19

Meet the people behind the prefixes...



Steve & Julie French, Beaverton, Michigan
www.redwhiteandroan.com
 Steve: 989-798-8223 Julie: 989-965-6363
OFFERING LOTS 20, 21, 22A, 22B and 23

Little Cedar Cattle Co. is home to a leading Shorthorn breeding program operated by Steve and Julie French, a daughter of the late David and Mary Ann McMahon. Since their marriage 22 years ago, they have also developed a powerful set of Angus females at their ranch in central Michigan. We welcome the consignors and customers for the elite Shorthorn sale on Saturday, April 20 that will take place right here at Belle Point after the Angus sale, starting at 4 pm. Read all about the "Springtime Revival" on page 50!

Steve is a broker of plastics raw materials, and he's also on-the-job everyday as a cattle breeder. He's a diligent student of both breeds, and a master at selecting, developing and mating cattle. An Oklahoma State graduate in Animal Science/Livestock Merchandising, Julie directs and implements promotional strategies for LCCC and BPR year-round, along with advising clients on project development and collaborating on innovative promotional programs. She's an enthusiastic and dedicated supporter of Angus Foundation and Shorthorn Youth Development Fund, continually helping expand awareness and develop programs and events that raise funds.

Steve and Julie actively contribute to Belle Point's management and development on a daily basis, in regular meetings with family members and ranch staff, selecting cattle from national level auctions, determining AI matings, and planning the sale. They're always "thinking big" and are optimistic and enthusiastic about what's ahead on Belle Point's path toward the future!



Fred & Shirley Williams
 Van Buren, Arkansas
 Shirley: 479-651-8302
 E-mail: williamsfair Oaks@aol.com

OFFERING LOTS 30 and 33

For many years, the Belle Point sale has featured sale lots from the herd of our great friends and neighbors Fred and Shirley Williams. A past president of the American Angus Auxiliary, Shirley is Fair Oaks Farm manager and an AI master. She is also a talented horsewoman, spending lots of time training and transporting their granddaughters on the show road. Fred has recently retired from his fast-paced advertising agency which kept him movin' and shakin' and involved in pretty much everything around "River City."

Shirley is well known in these parts as a very good "cowman!" (She knows and shows dogs too!) Her cow business philosophy is rooted in Fred's steady reminder that the margin of profit on seedstock cattle can be pretty slim. She stays focused on constant production, and the carcass characteristics that ensure high quality BEEF! Over the years, Shirley has been mentored by some of the breed's greatest cowmen that she met right here at Belle Point. She listens, and thinks, and applies data to practical performance characteristics – udder quality, fertility and cow and calf condition at weaning. Good people, good cattle!

Fast Pay Makes Fast Friends



By Mark Vittert, published in 1981
 First reprinted 35 years ago in
 the 1989 Belle Point catalog

The stakes of the poker game were getting pretty high. There was more than \$100 in the pot and unfortunately my cards were pretty good. I had to play the hand out. It was 3 a.m. and we'd been at the table for seven hours. I kept meeting the raises, the pot kept growing and all I remember is that the Captain's cards beat mine – flush over straight. That hand ended the game and we all settled up. Except me. I owed the Captain \$400 and, never thinking of losing that much, I didn't have it with me. I told the Captain that I'd send him a check. He said fine but he also added: "Mark, just remember that fast pay makes fast friends."

We've all heard different versions of the old joke, "the three biggest lies." The joke always begins with the first lie being, "the check is in the mail." There is something special about someone who always follows through on what he promises. Not just that they actually do what they say but rather that they do it when they say they will and that it's done with class.

How many people in business do you know that you confidently could count to follow through on time? The lawyer says the papers will be done on Wednesday. Your big customer says that headquarters wants your payment held up for just another week. The head of personnel says he'll call you on Tuesday about the new job. Well, we all know those who do just what they say are rare indeed. It's so rare, that whenever people do follow through on time I'm really pleasantly surprised and appreciative. Even if the news is bad, I feel positive toward the caller if it was done on time. Stringing people out is a bad habit. Generally, people who reach the top have learned to follow through quickly. As Tom Curtis once told me: "A congressman learns to make as few commitments as possible but when a promise is made, then you must follow through at all costs and promptly." The place most people fall down is in the category of money. I've found that if you pay quickly, most other obligations will appear to be easily met. "Fast pay" will make you feel better. After you write the check you can forget about the debt. And "fast pay" also keeps the other person from spending those waiting days thinking about your faults. Also, you become the kind of person people want to work with again. I called the Captain on a Wednesday in February and asked if he would like to invest \$100,000 to \$150,000 in a project I was putting together. He said: "Yeah, it sounds good. I'll put the check in the mail right now. Got to go now. Thanks." Two days later on Friday, I received this crumpled little note in the mail. "Mark: Enclosed is check for \$100 grand. I'll play you bumper pool for the other 50 grand. Good luck, Captain." I suppose this is an example of a man who practices what he believes in.

Look what's coming down from "Up North!"



Herd Sire Prospect

LCCC Surplus 2301 – Lot 20

Cotton & Associates: Surplus 2301 is a powerful yearling herd sire prospect produced by a dam who combines the female sire Maverick with a daughter of the phenotype sire Sensation 5615. He's sired by BJ Surpass, the \$M leader of the Knoll Crest Farms and Connealy Angus herd sire rosters.



Competitive Show Heifer

LCCC Casino Lucy 2389 – Lot 21

Cotton & Associates: Lucy 2389 is an exciting show heifer prospect sired by the proven show heifer sire Casino and produced by a second-generation Little Cedar donor, Lucy All Star 1231.



LCCC Lucy All Star 1231
2013-14 ROV Intermediate Champion of the Year

20 LCCC Surplus 2301
 Birth Date: 4-18-2023 Bull *20671664 Tattoo: 2301

BJ Surpass #**TEX Playbook 5437 #**Basin Payweight 1682
 +*19774516 +*BJ Prophet 5275 +*Rita 1C43 of 9M26 Complete
 #**GAR Prophet
 *BJ Complete 1165

ANGUSGS
 Powered by NEOGEN

LCCC Georgina MA 2110 #**Basin Payweight 1682
 +*20036303 +*LRF David's Georgina 7606 Poss Pride 5163
 #**SAV Sensation 5615
 +*Champion Hill Georgina 8547

CED	BW	WW	YW	MILK
+7	+1.3	+73	+130	+27

CWT	MARB	RE	FAT	SM	SW	SB	SC
+61	+74	+92	+030	+85	+71	+171	+307

NON-PARENT FEMALES

Top 3% HPreg	Top 10% \$C	Top 15% \$F	Top 20% \$W	Top 25% RADG
Top 10% \$AxH	Top 10% \$M	Top 15% REA	Top 20% Doc	Top 25% WW
Top 10% \$AxJ	Top 10% Angle	Top 20% \$B	Top 25% CWT	Top 25% YW

■ BW: 75, Actual WW: 775, Weight on 3/13/24: 1,328

Remember, this prospect is just now a yearling. Protect your investment with feed and special attention to make sure he reaches his potential as he develops into full maturity.

Steve French: Surplus 2301 made the trip to Belle Point back in early fall to be developed with the rest of the Top Cut Yearlings.

We hear he's been the STANDOUT among a very good set of bulls and he will be OUTSTANDING as a herd sire striding your front pasture!

21 LCCC Casino Lucy 2389
 Birth Date: 9-3-2023 Cow +*20796672 Tattoo: 2389

KR Casino 6243 *CFCC Black Jack 001 *Silveiras El Capitan 6510
 +*18624063 +*Malsons Savannah 27Y CFCC Fantasia Dateline 633
 #Famous 7001
 #SAV Net Worth 4200
 Summitcrest Lucy L021

ANGUSGS
 Powered by NEOGEN

LCCC Lucy All Star 1231 DAJS All Star M243
 *17401539 LCCC Lucy 131

CED	BW	WW	YW	MILK
-6	+4.2	+48	+78	+38

CWT	MARB	RE	FAT	SM	SW	SB	SC
+35	+36	+26	+053	+55	+51	+109	+196

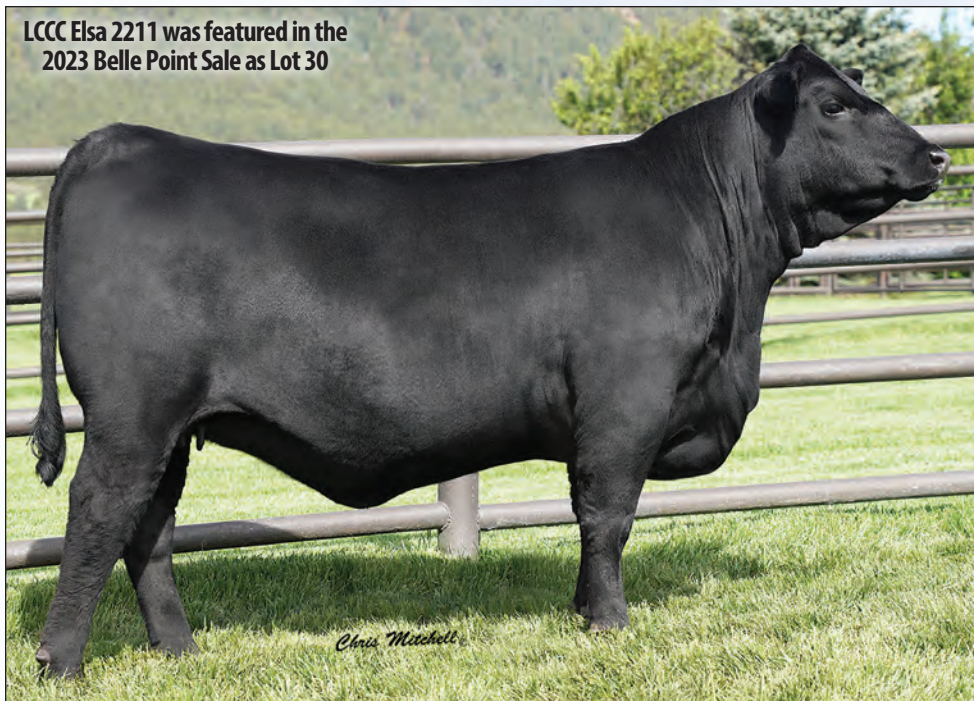
NON-PARENT FEMALES

Top 2% Claw	Top 2% DMI	Top 2% Milk	Top 20% Angle

■ We'll get Lot 21 transferred to make the NJAS ownership deadline!

Steve French: Lot 21's dam, Lucy All Star, earned AAA Roll of Victory Intermediate Champion of the Year and her granddam, Lucy 131, was ROV Reserve Dam of the Year. Lucy 2389 will be competitive in the fall division at any level.

LCCC Elsa 2211 was featured in the 2023 Belle Point Sale as Lot 30



LCCC Elsa 2211 – Full Sister to Lot 22A, Maternal Sister to Lot 22B
Top-selling Spring Bred Heifer of the 2023 Spruce Mountain Ranch Sale

Success!

Looks like Chuck learned a profitable strategy from Dave's playbook: "As products move along the distribution chain they should increase in value at every step."

He turned a \$12,000 heifer into a \$55,000 heifer in less than 4 months!

We've known Spruce Mountain Ranch Manager Chuck Brost and his family since way back in our NJAA days. (That means we've been friends over 40 years!) All the "Spruce" cattle we've acquired have made an major impact on our progress, and we truly appreciate Spruce Mountain's consistent support of our sales, as well as Chuck's practical advice that has helped us take it up a few notches. This business is still all about relationships and ours with Chuck and the Ames family is valued!

I suppose some may not be willing to disclose the astounding margin Chuck made on LCCC Elsa 2211 between April 15 and August 12 of last year. Heck, we applaud this amazing INCREASE IN VALUE. In just ONE BIG STEP, she achieved Top-Selling Bred Heifer of the 2023 Spruce Mountain Sale! We appreciate the investment of Poss Angus, Nebraska and Dixie Valley Angus, California in the Spruce Mountain sale, and want you to be successful with this great young female!

As the MASTER of the "Angus Flip," we know Dave would raise his 7 oz bottle of Bud to YOU, Chuck!

We want to help you be **SUCCESSFUL** and **ENJOY** being in the Angus business just like...



Offering CHOICE of Lots 22A or 22B. The Spruce Mountain Top-Selling Spring Bred Heifer is their SISTER – Snap 'Em Up!

22A Surpass x Elsa Unsexed Embryos

BJ Surpass
*19774516

#**TEX Playbook 5437
*BJ Prophet 5275

LCCC Elsa M 207
*19743445

#**EXAR Monumental 6056B
*LCCC Elsa 703

#**Basin Payweight 1682
*Rita 1C43 of 9M26 Complete
#**GAR Prophet
*BJ Complete 1165

#3F Epic 4631
*FWY 7008 of C085 4029
#**WR Journey-1X74
*LCCC Elsa of Conanga 1400

CED	BW	WW	YW	MILK
+11	+1	+67	+109	+32
+15	-1.1	+64	+120	+32

CWT	MARB	RE	FAT	SM	SW	SB	SC
+41	+75	+62	-010	+110	+77	+145	+298
+55	+76	+98	+004	+55	+65	+167	+272

DONOR - PROVEN FEMALES

Top 2% CED	Top 10% BW	Top 15% \$F	Top 20% RADG	Top 25% Doc
Top 4% \$AxH	Top 10% CEM	Top 15% \$G	Top 20% SC	Top 25% Marb
Top 4% \$AxJ	Top 15% \$B	Top 20% CWT	Top 20% YW	
Top 5% REA	Top 15% \$C	Top 20% Milk	Top 25% \$W	

Little Cedar Cattle Company is offering 4 unsexed embryos from the mating of BJ Surpass and LCCC Elsa M 207 that are full sibs to LCCC Elsa 2211.

Cotton & Associates:

Featuring two sets of embryos from the proven and prolific Little Cedar donor, Elsa M207 sired by the \$M leader, Surpass and the exciting young sire in the ST Genetics roster, Kindred.

LCCC Elsa 2211, bred by Little Cedar Cattle Company and pictured above, is the full sister to Lot 22A and maternal sister to Lot 22B.

Pictured above when she sold as one of the most talked about females of the 2023 Spruce Mountain Ranch Sale, Elsa 2211 was the \$55,000 selection of Poss Angus and Dixie Valley Ranch, earning the highly competitive ranking of Top-selling Spring Bred Heifer of that offering.

22B Kindred x Elsa Heifer Embryos

KA Kindred
*20446645

*GB Fireball 672
*KA Miss High Weigh 862

LCCC Elsa M 207
*19743445

#**EXAR Monumental 6056B
*LCCC Elsa 703

*GAR Sure Fire 6404
*GB Anticipation 432
*EWA High Weigh 3123
KA Miss Discovery 5163

#3F Epic 4631
*FWY 7008 of C085 4029
#**WR Journey-1X74
*LCCC Elsa of Conanga 1400

CED	BW	WW	YW	MILK
+10	-.4	+79	+149	+31
+15	-1.1	+64	+120	+32

CWT	MARB	RE	FAT	SM	SW	SB	SC
+74	+1.83	+1.01	+016	+70	+77	+246	+389
+55	+76	+98	+004	+55	+65	+167	+272

NON-PARENT FEMALES

Top 2% CED	Top 10% BW	Top 15% \$F	Top 20% RADG	Top 25% Doc
Top 4% \$AxH	Top 10% CEM	Top 15% \$G	Top 20% SC	Top 25% Marb
Top 4% \$AxJ	Top 15% \$B	Top 20% CWT	Top 20% YW	
Top 5% REA	Top 15% \$C	Top 20% Milk	Top 25% \$W	

Little Cedar Cattle Company is offering 4 heifer embryos from the mating of KA Kindred and LCCC Elsa M 207 that are maternal sisters to LCCC Elsa 2211.

Fancy Fall Heifers

Dave always called 'em...

Share the Fun!

CHANGEMAKERS

Investing in the **FRESH** potential of Fancy Fall Heifer Calves is **FUN** because they will put your Angus herd on a new path to **SUCCESS!**

Take Lot 24 for example. Her dam, Pollard Blackbird 7567, is another GREAT COW we selected from the Pollard Farms program for a LEADERSHIP ROLE in our Donor Dept. We have mated 7567 many different ways, most recently to Salvation and Jameson. We are developing two Salvation daughters as replacements, and Jim Moore selected her Salvation son for use in his elite commercial program. Blackbird 7567's daughter by Jameson is yet another functional, powerful herd builder – just like her mother has been for us!

We've assembled 14 Fall Heifers that will take your program into the future – top genetics, solid numbers and they've got THE LOOK we all like. Take stock of your priorities and how you measure success. IMAGINE how these fresh, young CHANGEMAKERS can contribute to your future. Sharing our success is one of the things that makes all the time, money and effort we put into this Angus business ENJOYABLE. It's fun!

23 LCCC Ida Belle C 2387

Birth Date: 10-11-2023 Cow *20798002 Tattoo: 2387
 *Sitz Resilient 10208 #Sitz Stellar 726D
 Connealy Craftsman #Black Cathy of Conanga 8521 *Sitz Miss Burgess 1856
 *20132505 #*Basin Joy 9140 *Connealy Niobrara 5451
 #*Basin Joy 5367 Black Carla of Conanga 450
 #Hoover Know How #*Hoover No Doubt
 LCCC Ida Belle KH 2112 #Blkcp Empress Ellston L265
 *20087303 LCCC Idabelle PW 705 #*Basin Payweight 1682
 LCCC Ida Belle IM 118

CED	BW	WW	YW	MILK			
+4	+1.8	+66	+116	+25			
CWT	MARB	RE	FAT	\$M	\$W	\$B	\$C
+55	+1.03	+80	+0.003	+90	+65	+176	+318

NON-PARENT FEMALES			
Top 2% \$M	Top 15% \$G	Top 20% \$AxH	Top 25% \$F
Top 2% HPreg	Top 15% Angle	Top 20% \$AxJ	Top 25% Claw
Top 10% \$C	Top 15% SC	Top 20% \$B	Top 25% Marb

■ Balanced-trait prospect produced by a dam who combines featured female sires Know How and Payweight 1682 and sired by the record-selling ST Genetics and Select Sires roster member Craftsman.



LCCC Ida Belle C 2387 – Lot 23

24 Belle Blackbird 7567 H33

Birth Date: 8-30-2023 Cow +*20749530 Tattoo: H33
 #*Basin Deposit 6249 #*Basin Advance 3134
 Basin Jameson 1076 #*Basin Lucy 4288
 *20071781 #*Basin Joy 9140 #*EXAR Monumental 6056B
 #*Basin Joy 5367
 #*VAR Discovery 2240 #*AAR Ten X 7008 SA
 Pollard Blackbird 7567 #*Deer Valley Rita 0308
 #*18974128 #*Vintage Blackbird 4202
 #*Connealy Consensus 7229
 #*Sandpoint Blackbird 8809

CED	BW	WW	YW	MILK			
+0	+4.7	+102	+166	+22			
CWT	MARB	RE	FAT	\$M	\$W	\$B	\$C
+69	+1.20	+1.08	-.033	+72	+78	+192	+321

NON-PARENT FEMALES				
Top 1% Angle	Top 5% \$G	Top 10% Fat	Top 15% CWT	Top 25% RADG
Top 1% WW	Top 10% \$B	Top 10% HS	Top 15% HPreg	
Top 1% YW	Top 10% \$C	Top 10% REA	Top 15% Marb	
Top 5% \$AxJ	Top 10% \$W	Top 15% \$AxH	Top 25% \$F	

■ Powerful high-growth, carcass and \$C prospect sired by the \$600,000 Jameson and produced by the cornerstone Blackbird 7567, a direct daughter of the featured Blackbird in the Riverbend program, Blackbird 4202.



Belle Blackbird 7567 H33 – Lot 24

25 Belle Pride J132 H13

Birth Date: 8-26-2023 Cow *20748263 Tattoo: H13
 *Connealy Clarity Cherry Creek Land Grant
 #*Poss Blueblood 6502 #Breslie of Conanga 6988
 Poss Winchester #*Poss Blueblood 920
 #*20060473 #*Yon Top Cut 730
 #*Spring Cove Reno 4021
 Audley Pride J132 #*Yon Sarah D668
 #*20267359 #*KCF Miss Y403 B579
 #*KCF Miss Sierra Cut Y374

CED	BW	WW	YW	MILK			
-1	+4.2	+85	+143	+24			
CWT	MARB	RE	FAT	\$M	\$W	\$B	\$C
+68	+1.08	+1.12	+0.010	+85	+72	+187	+328

NON-PARENT FEMALES				
Top 4% SC	Top 5% WW	Top 10% Claw	Top 15% CWT	Top 20% Marb
Top 5% \$C	Top 10% \$AxH	Top 10% YW	Top 15% HPreg	
Top 5% \$M	Top 10% \$AxJ	Top 15% \$B	Top 20% \$F	
Top 5% REA	Top 10% \$G	Top 15% \$W	Top 20% Doc	

■ Growth, carcass, \$M and \$C prospect produced by a first calf heifer bred in the Audley Farm program and sired by the popular ST Genetics roster member Winchester.



Belle Pride J132 H13 – Lot 25

Pollard
Blackbird
7567
BPR Donor
& Dam
of Lot 24



**Lot 24's dam originated in the Pollard program.
She's another GREAT COW who is assigned a
LEADERSHIP ROLE in our Donor Department!**



Belle Evergreen Erica 193 – Lot 26



Belle Everelda Entense 1383 – Lot 27

26 Belle Evergreen Erica 193

Birth Date: 9-13-2023 Cow *20748359 Tattoo: 193

Connealy Clarity Cherry Creek Land Grant
*20060473 *Poss Blueblood 6502 *Breshie of Conanga 6988
Poss Easy Impact 0119
Poss Blueblood 920

ANGUSGS
Powered by NEOGEN

*GAR Home Town #*GAR Ashland
Belle Evergreen Erica A211 *Chair Rock Sure Fire 6095
*19985264 *DCF Evergreen Erica 7842 *VAR Rubicon 5414
*SMR Evergreen Erica 4520

CED	BW	WW	YW	MILK			
+12	+1	+80	+150	+32			
CWT	MARB	RE	FAT	\$M	\$W	\$B	\$C
+66	+1.68	+0.87	+0.54	+90	+83	+209	+361

NON-PARENT FEMALES

Top 1% \$C	Top 3% \$W	Top 10% CED	Top 15% HPreg	Top 20% CWT
Top 2% \$G	Top 4% \$AxH	Top 10% CEM	Top 15% Milk	Top 25% BW
Top 2% \$M	Top 4% \$B	Top 10% WW	Top 15% RADG	Top 25% REA
Top 2% Marb	Top 5% YW	Top 15% \$AxJ	Top 20% \$F	

■ Low-birth, Marb., \$M and \$C combination female by the popular Winchester.

27 Belle Everelda Entense 1383

Birth Date: 9-20-2023 Cow *20748385 Tattoo: 1383

Connealy Craftsman *Sitz Resilient 10208 #*Sitz Stellar 726D
*20132505 #*Black Cathy of Conanga 8521 *Sitz Miss Burgess 1856
*Connealy Niobrara 5451
Black Carla of Conanga 450

ANGUSGS
Powered by NEOGEN

#*Connealy Confidence Plus #*Connealy Confidence 0100
HF Everelda Entense 801 Elbanna of Conanga 1209
*19090954 *HF Everelda Entense 607 #*SAV Resource 1441
*Limestone Ever Entense Y122

CED	BW	WW	YW	MILK			
+9	+1.1	+68	+120	+30			
CWT	MARB	RE	FAT	\$M	\$W	\$B	\$C
+43	+0.62	+0.97	+0.004	+108	+75	+140	+290

NON-PARENT FEMALES

Top 1% \$M	Top 10% Angle	Top 20% \$C	Top 25% Milk
Top 1% Claw	Top 10% HPreg	Top 25% \$AxH	
Top 10% \$W	Top 15% REA	Top 25% \$AxJ	

■ Balanced-trait prospect from the famous Everelda Entense family who blends Craftsman with Confidence Plus and the phenotype sire Resource.

28 Belle Rita A58 1463

Birth Date: 9-23-2023 Cow *20748382 Tattoo: 1463

Connealy Craftsman *Sitz Resilient 10208 #*Sitz Stellar 726D
*20132505 #*Black Cathy of Conanga 8521 *Sitz Miss Burgess 1856
*Connealy Niobrara 5451
Black Carla of Conanga 450

ANGUSGS
Powered by NEOGEN

#*TEX Playbook 5437 #*Basin Payweight 1682
Belle Rita A58 *Chair Rock Sure Fire 6095
*19257249 **Woodside Rita 6X12 of 0243 #*Rita 1C43 of 9M26 Complete
#*AAR Ten X 7008 SA
+Rita 0243 of Rita 7068 5M2

CED	BW	WW	YW	MILK			
+11	+0.8	+71	+122	+41			
CWT	MARB	RE	FAT	\$M	\$W	\$B	\$C
+60	+1.10	+0.84	+0.53	+98	+84	+172	+321

NON-PARENT FEMALES

Top 1% \$M	Top 4% HPreg	Top 15% \$AxJ	Top 20% \$AxH	Top 20% HS
Top 1% Milk	Top 10% \$C	Top 15% \$G	Top 20% \$B	Top 20% Marb
Top 2% \$W	Top 10% CEM	Top 15% CED	Top 20% Angle	Top 25% WW

■ Outstanding low-birth, \$M and \$C Craftsman daughter produced by a second-generation Belle Point Rita by the \$M sire, Playbook.

29 Belle Erica 9551 1213

Birth Date: 9-17-2023 Cow *20748378 Tattoo: 1213

Connealy Craftsman *Sitz Resilient 10208 #*Sitz Stellar 726D
*20132505 #*Black Cathy of Conanga 8521 *Sitz Miss Burgess 1856
*Connealy Niobrara 5451
Black Carla of Conanga 450

ANGUSGS
Powered by NEOGEN

*Vin-Mar Step Up 7573 #*Prairie Pride Next Step 2036
JACS Erica 9551 #Bunker IF Katinka 2122
*19531223 *Jacs Erica 7507 #*KCF Bennett Fortress
Jacs Erica 4576

CED	BW	WW	YW	MILK			
+9	+1.7	+75	+139	+34			
CWT	MARB	RE	FAT	\$M	\$W	\$B	\$C
+62	+1.26	+0.79	+0.004	+96	+78	+188	+340

NON-PARENT FEMALES

Top 1% \$M	Top 10% \$B	Top 10% Marb	Top 15% HS	Top 25% CWT
Top 2% Angle	Top 10% \$G	Top 10% Milk	Top 15% YW	Top 25% PAP
Top 3% \$C	Top 10% \$W	Top 15% \$AxJ	Top 20% WW	Top 25% RADG
Top 10% \$AxH	Top 10% HPreg	Top 15% Claw	Top 25% \$F	

■ PAP, Marb, \$M and \$C prospect by a proven daughter of Jac's Ranch herd sire Step Up 7573.



Belle Rita A58 1463 – Lot 28



Belle Erica 9551 1213 – Lot 29

CHANGEMAKERS

Fancy Fall Heifers

Top Genetics, Solid Numbers and THE LOOK we all like!



FOF MS Right Answer 3021 – Lot 30



Belle Rita B369 I13 – Lot 32



Belle Fanny I130 I123 – Lot 31



FOF Entense 3061 – Lot 33

30 F O F MS Right Answer 3021

Birth Date: 9-11-2023 Cow *20835578 Tattoo: 3021
 *Sitz Resilient 10208 #*Sitz Stellar 726D
 Connealy Craftsman #*Black Cathy of Conanga 8521 *Sitz Miss Burgess 1856
 *20132505 #*Connealy Niobrara 5451 *Connealy Niobrara 5451
 Black Carla of Conanga 450
ANGUSGS #*GAR Home Town #*GAR Ashland
 FOF MS Right Answer 1071 #*Chair Rock Sure Fire 6095
 *20153192 RAB MS Right Answer 4167a #*Connealy Right Answer 746
 RAB-GAR MS Quanh 4624X

CED	BW	WW	YW	MILK			
+9	+1.6	+74	+128	+33			
CWT	MARB	RE	FAT	SM	SW	SB	SC
+56	+1.06	+0.82	+0.035	+81	+78	+172	+304

NON-PARENT FEMALES				
Top 10% \$M	Top 10% Milk	Top 15% \$AxJ	Top 20% \$G	Top 20% WW
Top 10% \$W	Top 10% PAP	Top 15% \$C	Top 20% Doc	Top 25% Claw
Top 10% Angle	Top 15% \$AxH	Top 20% \$B	Top 20% Marb	Top 25% YW

■ Outstanding balanced-trait prospect from a sensational first calf heifer who blends the multi-trait leader Home Town with a Right Answer daughter.

31 Belle Fanny I130 I123

Birth Date: 9-14-2023 Cow *20749498 Tattoo: I123
 #*GAR Discovery 6737H #*VAR Discovery 2240
 E&B Wildcat 9402 #*GAR Ingenuity 3132 *GAR Ingenuity 3132
 *19810163 E&B Lady Plus 643 #*Connealy Confidence Plus
 #*E&B Lady Credence 190
ANGUSGS #*E&B Plus One #*Connealy Confidence Plus
 Belle Fanny I130 #*E&B Lady 1023 Precision 936
 *19828921 #*Spruce Mtn Fanny 7411 #*VAR Discovery 2240
 #*FWY 9Q13 of 9360 3545

CED	BW	WW	YW	MILK			
+13	+1.3	+77	+148	+22			
CWT	MARB	RE	FAT	SM	SW	SB	SC
+60	+1.13	+0.85	+0.023	+53	+65	+190	+299

NON-PARENT FEMALES				
Top 4% RADG	Top 10% \$B	Top 15% \$C	Top 15% WW	Top 25% REA
Top 10% \$AxH	Top 10% CED	Top 15% \$F	Top 20% HS	
Top 10% \$AxJ	Top 10% YW	Top 15% \$G	Top 20% Marb	

■ Balanced-trait daughter of the \$50,000 Genex roster member Wildcat.

32 Belle Rita B369 I13

Birth Date: 9-4-2023 Cow *20746307 Tattoo: I13
 #*GAR Discovery 6737H #*VAR Discovery 2240
 E&B Wildcat 9402 #*GAR Ingenuity 3132
 *19810163 E&B Lady Plus 643 #*Connealy Confidence Plus
 #*E&B Lady Credence 190
ANGUSGS #*Hoover Know How #*Hoover No Doubt
 Belle Rita B369 #*Blkcp Empress Ellston L265
 *19501241 Burns Rita 7123 #*VAR Discovery 2240
 Burns Rita 1023

CED	BW	WW	YW	MILK			
+9	+1.7	+77	+142	+25			
CWT	MARB	RE	FAT	SM	SW	SB	SC
+78	+1.21	+0.95	+0.026	+75	+69	+217	+356

NON-PARENT FEMALES				
Top 1% \$C	Top 10% \$AxH	Top 15% Angle	Top 15% WW	Top 25% HPrng
Top 2% \$B	Top 10% \$AxJ	Top 15% Marb	Top 20% \$M	Top 25% SC
Top 2% \$F	Top 10% \$G	Top 15% RADG	Top 20% \$W	
Top 5% CWT	Top 10% YW	Top 15% REA	Top 20% HS	

■ Marb., \$B and \$C prospect from a second-generation Belle Point Rita.

33 F O F Entense 3061

Birth Date: 9-22-2023 Cow *20830130 Tattoo: 3061
 #*SS Enforcer E812 #*SvdGen Enhance
 Williams Jonesboro 700-602 #*SS Miss Daybreak K011 3K17
 #*19850751 #*Powell Erica 7312 #*ECO Lombardi 1512
 #*Williams Prop Erica 255 -895
ANGUSGS #*Basin Payweight 1682 #*Basin Payweight 006S
 Pollard Entense 9034 21AR O Lass 7017
 #*19382359 #*PF Entense 6182 #*VAR Discovery 2240
 #*PF 9563 Entense 4115

CED	BW	WW	YW	MILK			
-3	+3.9	+97	+167	+28			
CWT	MARB	RE	FAT	SM	SW	SB	SC
+88	+0.79	+1.04	+0	+64	+81	+193	+314

NON-PARENT FEMALES				
Top 1% WW	Top 3% \$F	Top 10% \$B	Top 15% \$AxH	Top 20% SC
Top 1% YW	Top 4% \$W	Top 10% \$C	Top 15% Angle	Top 25% \$G
Top 2% CWT	Top 10% \$AxJ	Top 10% REA	Top 15% RADG	Top 25% CEM

■ Power growth prospect sired by popular Soaring Eagle of the Ozarks sire Jonesboro 700-602 from a proven and productive Payweight 1682 daughter.

34 Belle Erica C41 I323

Birth Date: 9-19-2023 Cow *20748342 Tattoo: I323

Connealy Craftsman
*20132505
#Sitz Resilient 10208
#Black Cathy of Conanga 8521
#Sitz Stellar 726D
*Sitz Miss Burgess 1856
*Connealy Niobrara 5451
Black Carla of Conanga 450

ANGUSGS
Powered by NEAGEN

Belle Erica E18 C41
*20050486
*B/R MVP 5247
*Woodhill Erica C156-E18
#*Basin Payweight 1682
*B/R Blossom 3254
#*GAR Sure Fire
*Woodhill Erica A52-C156

CED	BW	WW	YW	MILK			
+12	+1.8	+88	+156	+37			
CWT	MARB	RE	FAT	\$M	\$W	\$B	\$C
+73	+1.22	+1.18	+0.27	+90	+90	+201	+351

NON-PARENT FEMALES				
Top 1% \$W	Top 3% \$AxH	Top 3% YW	Top 10% CED	Top 15% Claw
Top 2% \$AxJ	Top 3% Milk	Top 10% \$B	Top 10% CEM	Top 15% Marb
Top 2% \$C	Top 3% REA	Top 10% \$F	Top 10% CWT	Top 20% HPreg
Top 2% \$M	Top 3% WW	Top 10% \$G	Top 10% RADG	Top 25% Angle

■ Growth, carcass, \$M and \$C female produced by a 2nd generation Woodhill Erica.

35 Belle Blckbird 0761 I173

Birth Date: 9-15-2023 Cow *20747487 Tattoo: I173

Williams Jonesboro 700-602
*19850751
#SS Enforcer E812
#SydGen Enhance
#SS Miss Daybreak K011 3K17
*ECO Lombardi 1512
*Williams Prop Erica 255 -895

ANGUSGS
Powered by NEAGEN

Optum's Blckbird 0761
*20064628
*E&B Plus One
#*Connealy Confidence Plus
#*E&B Lady 1023 Precision 936
#*Basin Payweight 1682
*EZAR Blackbird A111

CED	BW	WW	YW	MILK			
+10	+9	+84	+148	+27			
CWT	MARB	RE	FAT	\$M	\$W	\$B	\$C
+74	+0.89	+1.05	+0.12	+82	+80	+190	+328

NON-PARENT FEMALES				
Top 4% \$W	Top 10% \$AxH	Top 10% CEM	Top 10% YW	Top 20% SC
Top 4% Claw	Top 10% \$AxJ	Top 10% CWT	Top 15% RADG	Top 25% HPreg
Top 5% \$C	Top 10% \$B	Top 10% REA	Top 20% \$G	
Top 5% \$F	Top 10% \$M	Top 10% WW	Top 20% CED	

■ Low-birth, RE, \$M and \$C female sired by multi-trait leader Jonesboro 700-602.

36 Belle Blackcap 5248 I333

Birth Date: 9-19-2023 Cow *20747667 Tattoo: I333

DB Iconic G95
*19611994
#*Musgrave 316 Stunner
*DB Ms Discovery D13
#*LD Capitalist 316
#MCATL Blackbird 831-1378
#*VAR Discovery 2240
DB Ms Final Tool 4120

ANGUSGS
Powered by NEAGEN

EXAR Blackcap 5248
*18087980
#*Sitz Top Game 561X
#*GDAR Game Day 449
#Sitz Pride 88T
#*EXAR Upshot 0562B
*Exar Blackcap 0203

CED	BW	WW	YW	MILK			
+5	+2.1	+81	+141	+32			
CWT	MARB	RE	FAT	\$M	\$W	\$B	\$C
+61	+1.31	+0.80	+0.57	+69	+78	+179	+301

NON-PARENT FEMALES			
Top 10% \$G	Top 10% WW	Top 15% \$AxJ	Top 15% Milk
Top 10% \$W	Top 10% YW	Top 15% \$B	Top 20% HPreg
Top 10% Marb	Top 15% \$AxH	Top 15% \$C	Top 25% CWT

■ Growth and Marb. female who combines the Genex leader, Iconic with a dam bred in the Express program by the proven RE leader Top Game 561X.

4-H has been changing lives for 122 years!

*Belle Point Ranch
is proud to be
the home of the
Lavaca 4-H Club.*

*Local youth
and families are
welcome to join
on the second
Sunday of the month.*

*We believe the
4-H Pledge is still
a great way to
live your best life.*

*Join us in
reciting it and
make a point
to remember
to apply it!*

EST. 1902

I PLEDGE MY
MY HEAD
TO CLEARER THINKING,
MY HEART
TO GREATER LOYALTY,
MY HANDS
TO LARGER SERVICE,
& MY HEALTH
TO BETTER LIVING,
FOR MY CLUB, MY COMMUNITY,
MY COUNTRY, AND MY WORLD.

Yearling

HERD BUILDERS

MAXIMUM IMPACT POTENTIAL

**DIY Project:
Breed to the
Sire of YOUR Choice!**

37 Belle Evergreen I720 A133

Birth Date: 1-8-2023 Cow *20567101 Tattoo: A133

Poss Rawhide
+*19416968

ANGUSGS
Powered by NCRCA

Belle Evergreen I720
*19828797

*Poss Maverick
+*Poss Blueblood 6502

*Hoover Know How
Woodhill Evergreen Y117-B231

##*Basin Payweight 1682
Poss Pride 5163
Poss Easy Impact 0119
Poss Blueblood 920

*Hoover No Doubt
#Blkcp Empress Ellston L265
*Baldridge Yardstick Y90
#Woodhill Evergreen T91-Y117

CED	BW	WW	YW	MILK			
+3	+2.5	+73	+128	+26			
CWT	MARB	RE	FAT	\$M	\$W	\$B	\$C
+71	+.87	+.75	+.039	+55	+64	+192	+304

NON-PARENT FEMALES			
Top 2% \$F	Top 10% RADG	Top 15% DMI	Top 25% WW
Top 10% \$B	Top 15% \$C	Top 15% PAP	Top 25% YW
Top 10% CWT	Top 15% CEM	Top 25% \$AxH	

■ Sells open and ready to breed to the sire of your choice.

A balanced-trait daughter of a second-generation Belle Point Evergreen sired by the outcross female sire Rawhide. The first calf heifer dam of Lot 37 stems from the famous Woodhill Evergreen family and is sired by the Teixeira and Select Sires roster member Know How.



Belle Evergreen I720 A133 – Lot 37

38 Belle Blackbird 0712 A243

Birth Date: 1-26-2023 Cow +*20629205 Tattoo: A243

Beal Breakthrough
+*19829112

ANGUSGS
Powered by NCRCA

EXAR Blackbird 0712
+*19700943

+*GAR Prophet K263
*HPCA Sure Fire S6

##*GAR Prophet
+*Chair Rock 5050 GAR 1131
##*GAR Sure Fire
+*HPCA Ingenuity A372

##*EXAR Monumental 6056B
#3F Epic 4631
*FWY 7008 of C085 4029
##*Basin Payweight 1682
#EXAR Blackbird 5366

CED	BW	WW	YW	MILK			
+15	+0	+85	+151	+35			
CWT	MARB	RE	FAT	\$M	\$W	\$B	\$C
+76	+1.58	+1.35	-.015	+70	+88	+230	+368

NON-PARENT FEMALES				
Top 1% \$AxH	Top 1% \$G	Top 3% Marb	Top 10% CWT	Top 20% Fat
Top 1% \$AxJ	Top 1% \$W	Top 4% YW	Top 10% Milk	Top 25% BW
Top 1% \$B	Top 1% REA	Top 5% WW	Top 15% CEM	
Top 1% \$C	Top 2% CED	Top 10% \$F	Top 15% HS	

■ Sells open and ready to breed to the sire of your choice.

A low-birth, growth, carcass, \$B and \$C headliner sired by the multi-trait leader of the ST Genetics roster Breakthrough and produced by a dam who combines the \$80,000 female sire Monumental with a daughter of the cornerstone female sire, Payweight 1682.



EXAR Blackbird 7310 – Maternal Granddam of Lot 38

39 Belle Lucy 0359 B23

Birth Date: 2-1-2023 Cow +*20623272 Tattoo: B23

BJ Surpass
+*19774516

ANGUSGS
Powered by NCRCA

Vintage Lucy 0359
+*19722441

##*TEX Playbook 5437
+*BJ Prophet 5275

*KCF Bennett Summation
+*44 Lucy 6483

##*Basin Payweight 1682
+*Rita 1C43 of 9M26 Complete
##*GAR Prophet
*BJ Complete 1165

##*KCF Bennett Consent Y75
*Thomas Patricia 9705
#*VAR Generation 2100
+*44 Lucy 4775

CED	BW	WW	YW	MILK			
+10	+.7	+97	+167	+32			
CWT	MARB	RE	FAT	\$M	\$W	\$B	\$C
+79	+.77	+.87	+.025	+78	+95	+172	+301

NON-PARENT FEMALES				
Top 1% \$W	Top 4% CWT	Top 15% \$F	Top 20% \$B	Top 25% RADG
Top 1% WW	Top 10% Claw	Top 15% \$M	Top 20% CED	Top 25% REA
Top 1% YW	Top 15% \$AxJ	Top 15% CEM	Top 25% \$AxH	
Top 2% SC	Top 15% \$C	Top 15% Milk	Top 25% Doc	

■ Sells open and ready to breed to the sire of your choice.

A powerful high-growth female sired by the \$M leader Surpass and produced by a multi-trait dam who blends the growth sire Summation with a direct daughter of the legendary 44 Farms herd sire producer Lucy 4775 who is sired by the balanced-trait sire Generation.



Belle Lucy 0359 B23 – Lot 39



Pass Rawhide – Sire of Lot 37



BJ Surpass – Sire of Lot 39



Basin Deposit 1181 – Sire of Lots 40 and 41



Yon Top Cut G730 – Sire of Lot 42

40 Belle Rita I50 B303

Birth Date: 2-19-2023 Cow *20623268 Tattoo: B303

Basin Deposit 1181 *20096257
 #**Basin Eileenmere 9158
 #**Basin Deposit 9583
 #**Basin Joy 2006
 #**Basin Adventure 6275
 #**Basin Eileenmere 5059
 #**EXAR Monumental 6056B
 #3F Epic 4631
 #**AAR Ten X 7008 SA
 #**Woodside Rita 6X12 of 0243
 #**Rita 0243 of Rita 7068 5M2

CED	BW	WW	YW	MILK			
+9	+1.9	+83	+132	+24			
CWT	MARB	RE	FAT	\$M	\$W	\$B	\$C
+75	+1.49	+0.85	+0.26	+63	+76	+213	+339

NON-PARENT FEMALES				
Top 1% CEM	Top 3% \$C	Top 4% Marb	Top 10% CWT	Top 20% YW
Top 3% \$AxJ	Top 3% \$G	Top 10% \$F	Top 10% WW	Top 25% REA
Top 3% \$B	Top 4% \$AxH	Top 10% \$W	Top 20% HS	

■ Sells open and ready to breed to the sire of your choice.

An outstanding Marb. and \$C prospect produced by a first calf heifer who combines the \$80,000 Monumental with a cornerstone Belle Point Rita, Rita 6X12. Her sire is Belle Point herd sire Deposit 1181.



Belle Rita I50 B303 – Lot 40

41 Belle Everelda J70 B313

Birth Date: 2-20-2023 Cow *20623269 Tattoo: B313

Basin Deposit 1181 *20096257
 #**Basin Eileenmere 9158
 #**Basin Deposit 9583
 #**Basin Joy 2006
 #**Basin Adventure 6275
 #**Basin Eileenmere 5059
 #**Rito 3S10 of 9Q15 Progress
 #**J/R Queen of New Design 356H
 #**S Chisum 6175
 #**Circle A Everelda 0420
 #**44 Strike Force 6003
 Circle A Everelda 3402

CED	BW	WW	YW	MILK			
+13	+0.8	+82	+140	+22			
CWT	MARB	RE	FAT	\$M	\$W	\$B	\$C
+75	+1.18	+0.92	+0.016	+75	+76	+202	+337

NON-PARENT FEMALES				
Top 1% CEM	Top 5% \$AxH	Top 10% \$W	Top 10% YW	
Top 3% \$C	Top 5% \$B	Top 10% CED	Top 15% Marb	
Top 3% \$C	Top 5% \$F	Top 10% CWT	Top 20% \$M	
Top 4% \$AxJ	Top 10% \$G	Top 10% WW	Top 20% REA	

■ Sells open and ready to breed to the sire of your choice.

A low-birth, growth, \$M and \$C female who combines two generations of proven Belle Point Ranch herd sires, Basin Deposit 1181 and 44 Strike Force 6003, with the foundation Everelda 3402.



Belle Everelda J70 B313 – Lot 41

42 Belle Queenie 1H9 C13

Birth Date: 3-6-2023 Cow *20628311 Tattoo: C13

Yon Top Cut G730 *19476453
 #**Spring Cove Reno 4021
 #**Yon Sarah D668
 #**Yon Sarah A615
 #**SydGen Enhance
 #**SydGen Exceed 3223
 #**EXAR PowerSource 4723B
 #**Dean's Queenie X123
 4 Sons Queenie 1H9 *19724910
 #**KM Broken Bow 002
 *Spring Cove Liza 021
 #**VAR Discovery 2240
 #**SydGen Rita 2618
 #**EXAR PowerSource 4723B
 #**Dean's Queenie X123

CED	BW	WW	YW	MILK			
+7	+2.7	+92	+155	+32			
CWT	MARB	RE	FAT	\$M	\$W	\$B	\$C
+65	+1.19	+0.95	-.034	+106	+92	+187	+349

NON-PARENT FEMALES				
Top 1% \$M	Top 3% YW	Top 10% Fat	Top 15% Milk	Top 25% Angle
Top 1% \$W	Top 10% \$AxH	Top 10% HPreg	Top 15% REA	Top 25% Doc
Top 2% \$C	Top 10% \$AxJ	Top 15% \$B	Top 20% CWT	Top 25% RADG
Top 2% WW	Top 10% \$G	Top 15% Marb	Top 20% SC	

■ Sells open and ready to breed to the sire of your choice.

A powerful growth, Marb., \$M and \$C combination prospect produced by a first calf heifer bred in the Four Sons program, Queenie 1H9, and sired by the \$M leader of the Select Sires roster Yon Top Cut.



Belle Queenie 1H9 C13 – Lot 42

Coming TWOs

AI-bred to KA Kindred
using sexed heifer semen

BRED FOR ADVANCEMENT

The work's all DONE FOR YOU.
Kindred Sexed will make heifers
and they will make you \$\$\$!

ST Genetics: Kindred lands in the top 1% for several \$Values including \$C 391 who offers moderate stature, foot improvement, and admirable calving ease. Aside from his elite EPD profile, Kindred is one of the best Fireball sons who offers a captivating presence and can be used to add efficient growth and Grid premiums.



KA Kindred – AI Service Sire of Lots 43 through 48

43 Belle Isabel 8624 H302

Birth Date: 8-29-2022 Cow **20462953 Tattoo: H302
Cherry Creek Land Grant #KCF Bennett Homestead
Connealy Clarity Cherry Crk Eva B27 M
*19555171 *Breshie of Conanga 6988 #*Connealy Confidence Plus
#*Connealy Confidence Plus Brely of Conanga 367
ANGUSGS
Spruce Mtn Isabel 8624 #*Connealy Confidence 0100
*19261801 *Baldridge Isabel C270 Elbanna of Conanga 1209
+baldridge Xpand x743
*Baldridge Isabel Y69

CED	BW	WW	YW	MILK			
+11	+1.1	+84	+147	+30			
CWT	MARB	RE	FAT	SM	SW	SB	SC
+70	+.88	+.98	+.026	+84	+85	+185	+324

NON-PARENT FEMALES							
Top 1% HS	Top 5% \$C	Top 10% \$M	Top 15% \$B	Top 15% REA			
Top 2% \$W	Top 10% \$AxH	Top 10% Doc	Top 15% CED	Top 25% \$G			
Top 2% Claw	Top 10% \$AxJ	Top 10% WW	Top 15% CWT	Top 25% Milk			
Top 3% Angle	Top 10% \$F	Top 10% YW	Top 15% RADG				

■ AI bred to sexed K A Kindred on 3/13/2024. See sale day update.

44 Belle Miss 4168 I302

Birth Date: 9-27-2022 Cow *20458389 Tattoo: I302
Poss Easy Impact 0119 #Poss Total Impact 745
Baldridge Alternative E125 Poss Elmaretta 736
*18837398 Baldridge Blackbird A030 #*Hoover Dam
ANGUSGS Baldridge Blackbird X89
*Rito 12E7 of 5F56 Rito 5M2 #**Rito Revenue 5M2 of 2536 Pre
WILKS Miss 4168 +*Rita 5F56 of 1198 FD
*18007431 *2 Bar 28 Ambush 1736 #*B/R Ambush 28
*2 Bar Mile High 9360

CED	BW	WW	YW	MILK			
+14	-1.3	+69	+117	+18			
CWT	MARB	RE	FAT	SM	SW	SB	SC
+51	+1.20	+.92	+.011	+38	+60	+181	+273

NON-PARENT FEMALES			
Top 4% \$AxH	Top 10% \$G	Top 15% CEM	
Top 4% CED	Top 10% BW	Top 15% Marb	
Top 10% \$AxJ	Top 15% \$B	Top 20% REA	

■ AI bred to sexed K A Kindred on 2/2/2024. See sale day update.

45 Belle Isabel 91120 K262

Birth Date: 11-12-2022 Cow **20564965 Tattoo: K262
#**TEX Playbook 5437 #**Basin Payweight 1682
BJ Surpass *Rita 1C43 of 9M26 Complete
*19774516 *BJ Prophet 5275 #**GAR Prophet
ANGUSGS *BJ Complete 1165
*Deer Valley Growth Fund #**Basin Payweight 1682
Deer Valley Isabel 91120 *Deer Valley Rita 36113
*19466534 *Deer Valley Isabel X3C +baldridge Xpand x743
*Baldridge Isabel Y69

CED	BW	WW	YW	MILK			
+13	-2.9	+73	+121	+37			
CWT	MARB	RE	FAT	SM	SW	SB	SC
+44	+.62	+.51	+.028	+101	+88	+126	+264

NON-PARENT FEMALES			
Top 1% \$M	Top 1% Claw	Top 10% CED	Top 15% HPreg
Top 1% \$W	Top 2% BW	Top 10% Doc	Top 25% WW
Top 1% Angle	Top 3% Milk	Top 15% CEM	

■ AI bred to sexed K A Kindred on 3/28/2024. See sale day update.



Belle Isabel 8624 H302 – Lot 43



Belle Miss 4168 I302 – Lot 44



Belle Isabel 91120 K262 – Lot 45



Spruce Mtn Isabel 8624 – Dam of Lot 43



Deer Valley Isabel 91120 – Dam of Lot 45



EXAR Rita 8773 – Dam of Lot 48

Cotton & Associates:
Lot 43 – A balanced-trait prospect from the herd producing Isabel family, she combines the cornerstone Belle Point Isabel 8624 with the now-deceased ST Genetics roster member Clarity. The dam of Lot 43 is a direct daughter of prolific former Spruce Mountain Ranch headliner Isabel C270 sired by the featured female sire Confidence Plus.

Lot 44 – A calving-ease and Marb. female sired by the proven Baldridge Performance Angus and Express Ranches sire, Alternative and stems from a sensational producing dam who combines the Genex sire Rito 12E7 with a direct daughter of the \$120,000 valued former Gwinnup Crazy K Ranch donor Mile High 9360 by the 44 Farms Marb. leader Ambush 28.

Lot 45 – A calving-ease and \$M headliner produced by the exciting young donor in the Belle Point embryo program Isabel 91120 sired by the \$M leader Surpass. Isabel 91120, the dam of Lot 45, is a direct daughter of the \$170,000 valued Deer Valley Farm and Express Ranches donor Isabel X3C sired by the breed registration leader Growth Fund.

Lot 46 – Marb. and RE prospect produced by a fourth-generation Lucy bred in the Daltons on the Sycamore program and now the cornerstone Lucy at Belle Point. Lucy 9349 is sired by the multi-trait leader of the FB Genetics, Soaring Eagle, Hinkle and Select Sires roster Veracious. The dam of Lot 46 blends the proven carcass sire Quantum and the calving-ease specialist Bronc with a direct daughter of the legendary Dalton Lucy, Lucy V033, by the \$50,000 Rito 9M25.

Lot 47 – A powerful growth outcross prospect who combines the popular Three Rivers 8062 and the Vermilion Ranch sire Bomber N33 with a proven daughter of the former Dameron Angus sire Brilliance.

Lot 48 – Marb. female who combines the \$150,000 valued Select Sires roster member Iron Horse 025F with a direct daughter of the legendary Express Ranches donor Sunrise 1482 by the foundation female sire, Payweight 1682.

If you're just starting out (or need to start over), Larry Cotton instructs: "PAY ATTENTION!"

46 Belle Lucy 9349 J12

Birth Date: 10-1-2022 Cow *20482655 Tattoo: J12

#*Mill Brae Identified 4031 #*Koupals B&B Identity
 HPCA Veracious #*HPCA Sunrise A246 #*GAR Sunrise
 #19699322 #*HPCA Prophet A3 #*GAR Sunrise
ANGUSGS #*GAR Quantum #*GAR Momentum
 #19539715 #*Daltons Lucy 729 #*GAR In Sure 1524
 #*Daltons Lucy 729 #*Baldridge Bronc
 #*BIG 9M25 of V033 3010

CEW	MARB	RE	FAT	\$M	\$W	\$B	\$C
+63	+1.05	+1.28	+0.19	+74	+74	+188	+318

CEW	MARB	RE	FAT	\$M	\$W	\$B	\$C
+63	+1.05	+1.28	+0.19	+74	+74	+188	+318

NON-PARENT FEMALES

Top 1% REA	Top 10% \$C	Top 15% \$AxH	Top 20% \$F	Top 25% \$M
Top 10% \$AxJ	Top 10% \$G	Top 15% \$W	Top 20% Angle	Top 25% CWT
Top 10% \$B	Top 10% WW	Top 15% YW	Top 20% Marb	Top 25% Claw

■ AI bred to sexed K A Kindred on 3/17/2024. See sale day update.



Belle Lucy 9349 J12 – Lot 46

47 Belle Lady Peak Dot 0358

Birth Date: 10-3-2022 Cow *20458213 Tattoo: J92

#*Ellingson Homestead 6030 #*CTS Remedy 1T01
 Ellingson Three Rivers 8062 EA Erica 1082
 #19203618 *EA Emblynette 6279 #*Ellingson Chaps 4095
ANGUSGS #*EA Emblynette 2159
 #*Casino Bomber N33 #*KM Broken Bow 002
 QVS /JKS Lady Peak Dot 0358 #*Casino Annie K48
 19442914 #*DS Lady Peak Dot 0354 #*SAV Brilliance 8077
 Lady of Peak Dot 217W

CEW	MARB	RE	FAT	\$M	\$W	\$B	\$C
+101	+0.49	+0.97	-0.16	+57	+75	+199	+315

CEW	MARB	RE	FAT	\$M	\$W	\$B	\$C
+101	+0.49	+0.97	-0.16	+57	+75	+199	+315

NON-PARENT FEMALES

Top 1% \$F	Top 2% RADG	Top 10% \$W	Top 20% \$AxH
Top 1% CWT	Top 4% Angle	Top 15% \$AxJ	Top 20% Fat
Top 1% WW	Top 10% \$B	Top 15% Milk	Top 25% Doc
Top 1% YW	Top 10% \$C	Top 15% REA	Top 25% HPreg

■ AI bred to sexed K A Kindred on 3/17/2024. See sale day update.

48 Belle Rita 8773 K42

Birth Date: 11-5-2022 Cow *20546572 Tattoo: K42

*EXAR Stallion 7986 #*EXAR Stud 4658B
 Big/WSC Iron Horse 025F #*EXAR Blackcap 3385
 #19415015 #*EXAR Henrietta Pride 5702 #*SandPoint Butkus X797
ANGUSGS #*Sitz Henrietta Pride 643T
 #*Basin Payweight 1682 #*Basin Payweight 006S
 EXAR Rita 8773 21AR O Lass 7017
 #19086182 #*GAR Sunrise 1482 #*GAR Sunrise
 #*GAR 5050 New Design T179

CEW	MARB	RE	FAT	\$M	\$W	\$B	\$C
+53	+1.49	+0.83	+0.07	+46	+65	+195	+299

CEW	MARB	RE	FAT	\$M	\$W	\$B	\$C
+53	+1.49	+0.83	+0.07	+46	+65	+195	+299

NON-PARENT FEMALES

Top 3% \$G	Top 10% \$B	Top 15% CEM	Top 15% YW
Top 4% Marb	Top 15% \$AxJ	Top 15% Doc	
Top 5% \$AxH	Top 15% \$C	Top 15% WW	

■ AI bred to sexed K A Kindred on 2/2/2024. See sale day update.

Spring Twos

The only reason for TIME is so everything doesn't happen at once. Einstein

Due to calve in Fall 2024



Baldridge Heat Seeker H925
Service Sire of Lots 49 and 50



Riverbend Black Label J1810
Service Sire of Lot 51



KA Kindred
Service Sire of Lot 52

49 Belle Rita 8311 C162

Birth Date: 3-10-2022 Cow #20385813 Tattoo: C162
 #*Mill Brae Identified 4031 #*Koupals B&B Identity
 #*HPCA Sunrise A246 #*HPCA Pro Blackcap 1092
 #*HPCA Sunrise
 #*HPCA Prophet A3
 #*Basin Payweight 1682 #*Basin Payweight 006S
 21AR O Lass 7017
 #*Summitcrest Complete 1P55
 +DRMCTR 111 Rita 6108

CED	BW	WW	YW	MILK			
+8	-.1	+62	+108	+38			
CWT	MARB	RE	FAT	SM	SB	SC	
+50	+1.23	+77	+076	+60	+72	+171	+282

PROVEN FEMALES			
Top 2% Milk	Top 15% \$G	Top 20% \$AxJ	Top 25% BW
Top 10% PAP	Top 15% \$W	Top 20% \$B	
Top 15% \$AxH	Top 15% Marb	Top 25% \$C	

■ Ultrasounded safe to sexed Baldridge Heat Seeker H925, due to calve 9/23/2024.



Belle Rita 8311 C162 - Lot 49

50 Belle Erica J39 A32

Birth Date: 1-4-2022 Cow #20255390 Tattoo: A32
 #*GAR Ashland #*GAR Early Bird
 #*GAR Home Town #*Chair Rock Ambush 1018
 #*19266718 #*Chair Rock Sure Fire 6095
 #*GAR Sure Fire
 #*Chair Rock Progress 3005
 #*Woodside #*Connealy Consensus 7229
 #*Rita 5F56 of 1198 FD
 #*Basin Payweight 006S
 #Basin Trojan Erica 1544

CED	BW	WW	YW	MILK			
+15	-1.2	+54	+103	+26			
CWT	MARB	RE	FAT	SM	SB	SC	
+32	+1.26	+98	-.018	+69	+58	+171	+291

PROVEN FEMALES				
Top 1% HS	Top 5% \$G	Top 15% \$AxH	Top 15% REA	Top 20% Fat
Top 2% CED	Top 10% BW	Top 15% \$AxJ	Top 20% \$B	
Top 3% CEM	Top 10% Marb	Top 15% PAP	Top 20% \$C	

■ Ultrasounded safe to sexed Baldridge Heat Seeker H925, due to calve 9/23/2024.



Belle Erica J39 A32 - Lot 50

51 Belle Lady Peak Dot A132

Birth Date: 1-8-2022 Cow #20260578 Tattoo: A132
 #*GAR Ashland #*GAR Early Bird
 #*GAR Kansas #*Chair Rock Ambush 1018
 #*19266637 #*Chair Rock Momentum 6057 #*GAR Momentum
 #*Chair Rock Sure Fire 4060
 #*Jindra Acclaim #*Jindra 3rd Dimension
 #*Jindra Blackbird Lassy 1111
 #*SAV Perfection 1891
 #*Lady of Peak Dot 2170

CED	BW	WW	YW	MILK			
+11	+1	+66	+118	+27			
CWT	MARB	RE	FAT	SM	SB	SC	
+48	+1.23	+84	+003	+47	+64	+178	+278

PROVEN FEMALES			
Top 10% \$G	Top 15% \$AxJ	Top 15% Marb	Top 25% \$C
Top 15% \$AxH	Top 15% CED	Top 20% \$B	Top 25% BW

■ Ultrasounded safe to Riverbend Black Label J1810, due to calve 9/23/2024.



Belle Lady Peak Dot A132 - Lot 51

Cotton & Associates:

Lot 49 – Royally bred low-birth and Marb. prospect sired by the multi-trait leader Veracious. The dam of Lot 49 is a direct daughter of the legendary and all-time high-income producing donor in the Gwinnup Crazy K Ranch program 1564 sired by the female sire Payweight 1682.

Lot 50 – This calving-ease and Marb. female sired by the record-selling multi-trait leader Home Town stems from a first calf heifer by Woodside, the former Belle Point herd sire who was valued at \$50,000 for half interest.

Lot 51 – Low-birth and Marb. daughter of the ST Genetics roster member Kansas, she stems from a outcross dam who blends the PAP sire Acclaim with a daughter of the phenotype sire Perfection 1891.

Lot 52 – An outstanding low-birth, PAP and Marb. prospect sired by the \$475,000 Home Town and produced by a dam who combines two legendary female sires, Discovery and Consensus, with a cornerstone of Daltons on the Sycamore, Lucy V033.

Lot 53 – Marb. and RE daughter of Kansas, the featured female sire in the ST Genetics roster. She was produced by the foundation Lady in the Belle Point program selected from the Benoit Angus program, Lady Plus 7114.

Lot 54 – An outstanding Marb. prospect who combines the Belle Point Ranch herd sire Maverick 948 with a daughter of the foundation Marb. sire Exceed.

For about five years, we have been using a RETRO approach by breeding our heifers A LITTLE OLDER so they calve closer to 30 months than 24 months.

In his book "Beef Cattle Science," noted Animal Scientist M.E. Ensminger wrote: "The conception rate of young heifers bred when just reaching puberty is lower than older ones. This may result in spreading the calving season over a longer period, with greater inconvenience and expense, more calving troubles, and a death loss of both dams and calves."

It's working PDG! With significantly increased AI conception rates for the first calf AND the second, we really have nothing to lose but a little TIME...and everything to GAIN!

52 Belle Lucy 5605 B92
 Birth Date: 2-2-2022 Cow #*20283217 Tattoo: B92

GAR Home Town #**GAR Ashland *GAR Early Bird
 *19266718 +*Chair Rock Sure Fire 6095 +*Chair Rock Ambush 1018
 +*Chair Rock Sure Fire 6095 #**GAR Sure Fire
 +*Chair Rock Progress 3005

ANGUSGS
 #*VAR Discovery 2240 #*AAR Ten X 7008 SA
 Deer Valley Lucy 5605 +*Deer Valley Rita 0308
 *18429632 +Crazy K Lucy 3303 #**Connealy Consensus 7229
 +Daltons Lucy V033

CED	BW	WW	YW	MILK			
+10	-.2	+57	+113	+30			
CWT	MARB	RE	FAT	SM	SW	SB	SC
+48	+1.58	+96	-.034	+57	+58	+208	+327

PROVEN FEMALES

Top 1% \$G	Top 5% \$C	Top 10% \$AxJ	Top 20% CED
Top 3% Marb	Top 5% Angle	Top 10% Fat	Top 25% \$F
Top 4% \$AxH	Top 5% CEM	Top 15% REA	Top 25% HS
Top 4% \$B	Top 5% PAP	Top 20% BW	Top 25% Milk

■ Ultrasounded safe to sexed K A Kindred, due to calve 9/23/2024.



Deer Valley Lucy 5605 – Dam of Lot 52

53 Belle Lady 7114 B252
 Birth Date: 2-5-2022 Cow #20284068 Tattoo: B252

GAR Kansas #**GAR Ashland *GAR Early Bird
 *19266637 +*Chair Rock Momentum 6057 +*Chair Rock Ambush 1018
 +*Chair Rock Sure Fire 4060

ANGUSGS
 #**Connealy Confidence Plus #*Connealy Confidence 0100
 E&B Lady Plus 7114 Elbanna of Conanga 1209
 18890168 E&b Lady New Design 0170 +E&B New Design 3133
 E&B Lady Retail Product 591

CED	BW	WW	YW	MILK			
+9	+2.2	+79	+139	+24			
CWT	MARB	RE	FAT	SM	SW	SB	SC
+72	+1.10	+1.29	-.005	+58	+68	+206	+325

PROVEN FEMALES

Top 1% REA	Top 4% \$B	Top 10% \$G	Top 15% RADG	Top 20% Marb
Top 2% \$AxJ	Top 5% \$C	Top 10% CEM	Top 15% WW	Top 25% \$W
Top 4% \$AxH	Top 5% \$F	Top 10% CWT	Top 15% YW	

■ Ultrasounded safe to Connealy Resilient 78L, due to calve 11/1/2024. Lot 53 is a maternal sister to Lot 58.



GAR Kansas – Sire of Lot 53

54 Belle Rita 7417 B432
 Birth Date: 2-24-2022 Cow #*20295786 Tattoo: B432

Poss Maverick 948 #**Basin Payweight 1682
 *19513886 +*Poss Blueblood 410 Poss Pride 5163
 +*Poss Blueblood 2135 Poss Easy Impact 0119

ANGUSGS
 #*SydGen Exceed 3223 #*SydGen Googol
 EZAR Rita 7417 +*SydGen Forever Lady 1255
 *18974172 *EZAR Rita A116 Riverbend Exclusive Y016
 Riverbend Rita X1305

CED	BW	WW	YW	MILK			
+3	+2.5	+67	+110	+26			
CWT	MARB	RE	FAT	SM	SW	SB	SC
+50	+1.34	+92	-.019	+65	+64	+196	+319

PROVEN FEMALES

Top 4% \$G	Top 10% DMI	Top 15% Fat	Top 20% REA
Top 10% \$B	Top 10% Marb	Top 20% \$AxJ	Top 25% \$F
Top 10% \$C	Top 15% \$AxH	Top 20% Claw	

■ Ultrasounded safe to Connealy Resilient 78L, due to calve 10/12/2024.



EZAR Rita 7417 – Dam of Lot 54

Fall PAIRS

These FALL CALVING COWS are rebred and have BIG CALVES ready to spin off!

This business is still all about relationships, but NOW is the time for these cows and calves to breakup! The fall calves are saying, "It's not you it's me." Little do they know their mothers have already moved on – they're bred to really GREAT SIREs to calve in September and October. VALUE!

Speaking of great sires, how 'bout our new LEADER, 44 Workday 2206? See him pictured below and on display at the sale. He's got a unique outcross pedigree, a balanced EPD profile, and he's got the LOOK! Besides the great bulls we've bought from them over the years, we value our RELATIONSHIP with 44 Farms. Many thanks to Bob McClaren, Doug Slattery, Jarrod Payne and Connie Smith for believing in us and allowing us time to make the right bulls for the innovative 44 system.



K A Kindred
Service Sire of Lot 55



Baldridge Heat Seeker H925
Service Sire of Lot 56



44 Workday 2206
Service Sire of Lots 57 and 58



Riverbend Black Label J1810
Service Sire of Lots 59, 60 and 61



Belle Rita B411 – Lot 55



DCF Evergreen Erica 7842 – Lot 56



Belle Rita A241 – Lot 57

When you come to Belle Point, GOOD DEALS come in all price ranges!

Speaking of GOOD DEALS, Lots 55 and 56 say "sexed" Kindred and Heat Seeker – that means a HEIFER CALF! Cows bred to 44 Workday and Riverbend Black Label are gonna produce MONEYMAKERS!



Poss Rawhide – Sire of Lot 55A



Poss Maverick 948 – Sire of Lot 56A



Connealy Craftsman – Sire of Lot 57A

55 Belle Rita B411

Birth Date: 2-25-2021 Cow *20049449 Tattoo: B411
 #*GAR Momentum #*GAR Progress
 EWA West Point 7258 #GAR Big Eye 1770
 +*19054061 +*EWA 3114 of 128 Weigh Up #*Plattemere Weigh Up K360
 Edgewood Jaunty 128
 #*Plattemere Weigh Up K360 #*Sitz Upward 307R
 #Barbara of Plattemere 337
 MGR Rita 8003 #*AAR Ten X 7008 SA
 *19159159 +*MGR Rita 4105 #*AAR Ten X 7008 SA
 +MGR Rita 1051

CED	BW	WW	YW	MILK			
+14	+6	+76	+133	+28			
CWT	MARB	RE	FAT	SM	SW	SB	SC
+52	+1.79	+76	+0.21	+55	+70	+207	+323

PROVEN FEMALES				
Top 1% \$AxH	Top 1% Marb	Top 10% YW	Top 20% REA	Top 25% HS
Top 1% \$AxJ	Top 2% \$C	Top 15% \$W	Top 25% CEM	
Top 1% \$B	Top 3% CED	Top 15% Angle	Top 25% CWT	
Top 1% \$G	Top 10% WW	Top 20% RADG	Top 25% HPreg	

■ Ultrasounded safe to sexed K A Kindred, due to calve 9/23/2024.

56 DCF Evergreen Erica 7842

Birth Date: 9-29-2017 Cow +*19132697 Tattoo: 7842
 #*Quaker Hill Rampage 0A36 #MCC Daybreak
 VAR Rubicon 5414 #*OHF Blackcap 6E2 of 4V16 4355
 +*18212186 +*Sandpoint Blackbird 8809 #*Connealy Onward
 +Riverbend Blackbird 4301
 #*AAR Ten X 7008 SA #*Mytty In Focus
 SMR Evergreen Erica 4520 #AAR Lady Kelton 5551
 *17885171 +BoBo Evergreen Erica 1038 #EXAR 263C
 +Bridges Predestined 7023

CED	BW	WW	YW	MILK			
+8	+2.6	+75	+129	+31			
CWT	MARB	RE	FAT	SM	SW	SB	SC
+58	+7.6	+1.06	-.020	+63	+70	+172	+286

PROVEN FEMALES				
Top 3% REA	Top 10% \$C	Top 15% \$G	Top 15% RADG	Top 25% Marb
Top 4% \$AxJ	Top 10% HPreg	Top 15% \$W	Top 15% YW	
Top 10% \$AxH	Top 10% WW	Top 15% CWT	Top 20% Milk	
Top 10% \$B	Top 15% \$F	Top 15% Fat	Top 25% CEM	

■ AI bred to sexed Baldrige Heat Seeker H925 on 2/2/2024. See sale day update.

57 Belle Rita A241

Birth Date: 1-9-2021 Cow *19985248 Tattoo: A241
 #EWA Peyton 642 #*Quaker Hill Manning 4EX9
 #*EWA 444 of 968 Progress
 Roseda Powerball23 F091 #*VAR Discovery 2240
 +*19180956 *Roseda Blackcap B103 D118 #*Roseda Blackcap 0134 B103
 #HF Brilliance 5132 #*SAV Brilliance 8077
 Belle Rita B298 #PVF Burgess 9109
 *19243656 *Belle Rita A56 3F Final Product 2651
 +DCF Rita 3533

CED	BW	WW	YW	MILK			
+5	+1.9	+84	+142	+28			
CWT	MARB	RE	FAT	SM	SW	SB	SC
+59	+.93	+.27	+.039	+60	+80	+158	+265

PROVEN FEMALES			
Top 2% \$W	Top 15% CWT	Top 20% \$C	Top 25% RADG
Top 3% WW	Top 15% Marb	Top 20% \$G	
Top 4% YW	Top 20% \$B	Top 25% \$F	

■ Ultrasounded safe to 44 Workday 2206, due to calve 10/22/2024.

55A Belle Rita B411 I103

Birth Date: 9-13-2023 Cow *20748340 Tattoo: I103
 #*Poss Maverick #*Basin Payweight 1682
 Poss Rawhide Poss Pride 5163
 +*19416968 +*Poss Blueblood 6502 #*Poss Easy Impact 0119
 Poss Blueblood 920
 #*GAR Momentum
 +*EWA West Point 7258 #*EWA 3114 of 128 Weigh Up
 #*Plattemere Weigh Up K360
 Belle Rita B411 #*MGR Rita 4105
 *20049449 *MGR Rita 8003

CED	BW	WW	YW	MILK			
+12	-.3	+81	+130	+27			
CWT	MARB	RE	FAT	SM	SW	SB	SC
+61	+1.58	+82	+0.43	+60	+81	+205	+326

NON-PARENT FEMALES				
Top 1% \$AxH	Top 3% Marb	Top 5% \$C	Top 10% WW	Top 20% YW
Top 2% \$AxJ	Top 4% \$W	Top 10% CED	Top 20% \$F	Top 25% CWT
Top 3% \$G	Top 5% \$B	Top 10% CEM	Top 20% BW	Top 25% Doc

56A BPR Maverick 948 K103

Birth Date: 11-7-2023 Bull *20794648 Tattoo: K103
 #*Poss Maverick #*Basin Payweight 1682
 Poss Maverick 948 Poss Pride 5163
 *19513886 #*Poss Blueblood 410 Poss Easy Impact 0119
 #*Poss Blueblood 2135
 #*VAR Rubicon 5414 #*Quaker Hill Rampage 0A36
 DCF Evergreen Erica 7842 #*Sandpoint Blackbird 8809
 +*19132697 #*AAR Ten X 7008 SA
 #*SMR Evergreen Erica 4520 +BoBo Evergreen Erica 1038

CED	BW	WW	YW	MILK			
+4	+2.6	+79	+133	+38			
CWT	MARB	RE	FAT	SM	SW	SB	SC
+72	+7.8	+.98	-.018	+58	+78	+185	+298

NON-PARENT FEMALES				
Top 3% Milk	Top 10% \$W	Top 10% REA	Top 15% WW	Top 25% \$G
Top 5% \$F	Top 10% CWT	Top 15% \$C	Top 20% \$AxJ	Top 25% Angle
Top 10% \$B	Top 10% RADG	Top 15% Fat	Top 20% YW	Top 25% DMI

57A Belle Rita A241 I443

Birth Date: 9-22-2023 Cow *20748356 Tattoo: I443
 #Sitz Resilient 10208 #*Sitz Stellar 726D
 #*Sitz Miss Burgess 1856
 Connealy Craftsman #*Black Cathy of Conanga 8521 #*Connealy Niobrara 5451
 *20132505 Black Carla of Conanga 450
 #*Roseda Powerball23 F091 #*EWA Peyton 642
 Belle Rita A241 #*Roseda Blackcap B103 D118
 *19985248 *Belle Rita B298 #HF Brilliance 5132
 #Belle Rita A56

CED	BW	WW	YW	MILK			
+10	+1	+87	+145	+28			
CWT	MARB	RE	FAT	SM	SW	SB	SC
+57	+1.03	+.45	+.062	+94	+91	+154	+294

NON-PARENT FEMALES			
Top 1% \$M	Top 10% HPreg	Top 20% \$C	Top 25% Angle
Top 1% \$W	Top 10% PAP	Top 20% CED	Top 25% BW
Top 4% WW	Top 10% YW	Top 25% \$G	Top 25% Marb

58**Belle Lady Plus A71**

Birth Date: 1-5-2021 Cow *19985239 Tattoo: A71

#*Basin Payweight 1682 #*Basin Payweight 006S
21AR O Lass 7017
*B/R Blossom 3254 *B/R Destination 7222-1148
*B/R Blossom 1102

B/R MVP 5247
*18272672**ANGUSGS**
Powered by NEOGENE&B Lady Plus 7114
18890168

#*Connealy Confidence Plus #*Connealy Confidence 0100
Elbanna of Conanga 1209
E&B New Design 3133
E&B Lady Retail Product 591

CED	BW	WW	YW	MILK			
+7	+2.2	+83	+137	+16			
CWT	MARB	RE	FAT	SM	SW	SB	SC
+68	+58	+79	+024	+83	+69	+166	+298

PROVEN FEMALES

Top 3% CEM Top 4% \$F Top 5% CWT Top 15% \$AxJ Top 15% REA
Top 3% HPreg Top 5% \$C Top 10% YW Top 15% \$B Top 20% RADG
Top 3% WW Top 5% \$M Top 15% \$AxH Top 15% \$W

■ Ultrasounded safe to 44 Workday 2206, due to calve 10/22/2024. Lot 58 is a maternal sister to Lot 53.

59**Optum's Sunrise 1506**

Birth Date: 8-26-2021 Cow +*20171049 Tattoo: 1506

#*KCF Bennett Consent Y75 #*Connealy Consensus
+KCF Miss Protege W148
KCF Bennett Summation +19125179 *Thomas Patricia 9705 #*SS Objective T510 0126
+Thomas Patricia 71138

HDSOKEXAR Sunrise 68736
+*18528847

#*VAR Generation 2100 #*Connealy Consensus 7229
+*Sandpoint Blackbird 8809
+*GAR Sunrise #**GAR Sunrise
+*GAR 5050 New Design T179

CED	BW	WW	YW	MILK			
+9	+1.1	+75	+142	+24			
CWT	MARB	RE	FAT	SM	SW	SB	SC
+58	+1.05	+1.18	+008	+79	+71	+183	+316

PROVEN FEMALES

Top 1% REA Top 4% \$G Top 10% \$M Top 10% RADG Top 20% Claw
Top 2% \$AxH Top 4% YW Top 10% \$W Top 10% WW Top 25% CED
Top 2% \$AxJ Top 5% \$B Top 10% HS Top 15% CWT
Top 2% \$C Top 5% Angle Top 10% Marb Top 20% \$F

■ AI bred to Riverbend Black Label J1810 on 2/2/2024. See sale day update.

60**EXAR Blackcap 9672**

Birth Date: 1-4-2019 Cow +*19353981 Tattoo: 9672

#*Connealy Confidence 0100 Connealy Tobin
Becka Gala of Conanga 8281
Connealy Confidence Plus #*Connealy Consensus
#17585576 Elbanna of Conanga 1209 Elbasta of Conanga 9703

HDSOK44 Blackcap 1752
+*17007357

#*Connealy Consensus 7229 #*Connealy Consensus
Blue Lilly of Conanga 16
+*Sandpoint Blackcap 7977 #*SS Objective T510 0126
+*GAR Load Up 1682

CED	BW	WW	YW	MILK			
+4	+3.0	+78	+141	+23			
CWT	MARB	RE	FAT	SM	SW	SB	SC
+61	+68	+1.21	+037	+80	+69	+168	+298

PROVEN FEMALES

Top 1% REA Top 5% \$AxJ Top 10% \$M Top 15% \$B Top 15% Doc
Top 4% YW Top 5% \$C Top 10% CWT Top 15% \$W Top 15% RADG
Top 5% \$AxH Top 10% \$F Top 10% WW Top 15% Angle Top 20% \$G

■ AI bred to Riverbend Black Label J1810 on 2/2/2024. See sale day update.

58A**Belle Lady A71 I63**

Birth Date: 9-11-2023 Cow *20748358 Tattoo: I63

*Sitz Resilient 10208 #*Sitz Stellar 726D
*Sitz Miss Burgess 1856
#*Black Cathy of Conanga 8521 *Connealy Niobrara 5451
Black Carla of Conanga 450

Connealy Craftsman
*20132505**ANGUSGS**
Powered by NEOGENBelle Lady Plus A71
*19985239

*B/R MVP 5247 #*Basin Payweight 1682
E&B Lady Plus 7114 *B/R Blossom 3254
#*Connealy Confidence Plus
E&B Lady New Design 0170

CED	BW	WW	YW	MILK			
+9	+9	+79	+140	+27			
CWT	MARB	RE	FAT	SM	SW	SB	SC
+57	+87	+94	-012	+95	+79	+172	+318

NON-PARENT FEMALES

Top 1% \$M Top 10% \$C Top 15% \$AxH Top 20% \$B Top 25% \$F
Top 5% \$W Top 10% HPreg Top 15% RADG Top 20% \$G Top 25% Angle
Top 10% \$AxJ Top 10% YW Top 15% WW Top 20% REA Top 25% Fat



Connealy Craftsman – Sire of Lot 58A

59A**Belle Sunrise 1506 K263**

Birth Date: 11-20-2023 Cow *20840153 Tattoo: K263

*GAR Discovery 6737H #*VAR Discovery 2240
*GAR Ingenuity 3132
E&B Wildcat 9402 #*Connealy Confidence Plus
*19810163 E&B Lady Plus 643 #+E&B Lady Credence 190

ANGUSGS
Powered by NEOGENOptum's Sunrise 1506
+*20171049

*KCF Bennett Summation #*KCF Bennett Consent Y75
*Thomas Patricia 9705
+*EXAR Sunrise 68736 #*VAR Generation 2100
+*GAR Sunrise 1482

CED	BW	WW	YW	MILK			
+11	+1.0	+89	+163	+32			
CWT	MARB	RE	FAT	SM	SW	SB	SC
+81	+1.18	+95	+024	+83	+86	+203	+346

NON-PARENT FEMALES

Top 1% \$W Top 3% WW Top 10% \$G Top 15% Claw Top 25% Doc
Top 1% HS Top 5% \$B Top 10% \$M Top 15% Marb Top 25% HPreg
Top 2% \$C Top 5% \$F Top 10% CEM Top 15% Milk
Top 2% YW Top 10% \$AxH Top 15% Angle Top 15% RADG
Top 3% CWT Top 10% \$AxJ Top 15% CED Top 15% REA



E&B Wildcat 9402 – Sire of Lot 59A

60A**BPR Maverick 948 K323**

Birth Date: 11-25-2023 Bull *20828500 Tattoo: K323

*Poss Maverick #*Basin Payweight 1682
Poss Pride 5163
Poss Maverick 948 #*Connealy Confidence Plus
*19513886 *Poss Blueblood 410 Poss Easy Impact 0119
*Poss Blueblood 2135

ANGUSGS
Powered by NEOGENEXAR Blackcap 9672
+*19353981

#*Connealy Confidence Plus #*Connealy Confidence 0100
Elbanna of Conanga 1209
+*44 Blackcap 1752 #*Connealy Consensus 7229
+*Sandpoint Blackcap 7977

CED	BW	WW	YW	MILK			
+0	+1.9	+76	+129	+34			
CWT	MARB	RE	FAT	SM	SW	SB	SC
+67	+81	+1.18	+018	+76	+81	+180	+309

NON-PARENT FEMALES

Top 3% REA Top 10% \$F Top 15% \$AxJ Top 15% CWT Top 20% WW
Top 4% \$W Top 10% Milk Top 15% \$B Top 20% \$G Top 25% YW
Top 10% \$C Top 15% \$AxH Top 15% Angle Top 20% \$M



Connealy Confidence Plus – Sire of Lot 60

61 Belle Rita K129

Birth Date: 11-12-2019 Cow *19598044 Tattoo: K129
 #*GAR Momentum #*GAR Progress
 #*GAR Prophet 2984 +GAR Big Eye 1770
 *GAR Prophet *GAR Prophet
 *GAR Daybreak 1521
 #*VAR Discovery 2240 #*AAR Ten X 7008 SA
 #*Deer Valley Rita 8343 +Deer Valley Rita 0308
 #*Rito 112 of 2536 Rito 616
 +GAR Ext 614

CED	BW	WW	YW	MILK			
+4	+2.7	+79	+143	+24			
CWT	MARB	RE	FAT	SM	SW	SB	SC
+68	+1.12	+0.30	+0.077	+53	+64	+180	+286

PROVEN FEMALES				
Top 4% YW	Top 10% SC	Top 10% RADG	Top 15% SC	Top 25% HPreg
Top 5% CWT	Top 10% SF	Top 10% WW	Top 25% \$W	
Top 10% \$B	Top 10% Marb	Top 15% \$G	Top 25% CEM	

■ AI bred to Riverbend Black Label J1810 on 2/2/2024. See sale day update.

61A BPR Maverick 948 L53

Birth Date: 12-15-2023 Bull *20887686 Tattoo: L53
 #*Poss Maverick #*Basin Payweight 1682
 Poss Pride 5163
 #*Poss Blueblood 410 Poss Easy Impact 0119
 *Poss Blueblood 2135
 #*GAR Inertia #*GAR Momentum
 #*GAR Prophet 2984
 #*VAR Discovery 2240
 +Deer Valley Rita 8343
 +MGR Rita 6060

CED	BW	WW	YW	MILK			
+2	+1.1	+72	+131	+26			
CWT	MARB	RE	FAT	SM	SW	SB	SC
+59	+1.15	+0.47	+0.050	+37	+64	+179	+269

NON-PARENT FEMALES				
Top 15% \$B	Top 15% Marb	Top 20% \$F	Top 20% YW	Top 25% WW
Top 15% \$G	Top 15% SC	Top 20% RADG	Top 25% Doc	



GAR Inertia – Sire of Lot 61



FOR ALL YOU DO this Bud's for you!

Belle Point Ranch Employees & McMahon Family
 Belle Point Beverages, Inc. Employees – Arkansas & Oklahoma

Cooper Cattle, Brent & Tracy Cooper

Trans Ova Genetics – Felipe Ruiz, Savannah Dei, Janie Brittain

Clay Ranch – Bobby & Christine Clay

Farmers Coop – Fort Smith, Van Buren, Greenwood

Purina® Animal Nutrition, LLC – Christi Keeler and Ted Perry

Alma Animal Clinic, Dr. Zac Phillips, DVM

Cooper Veterinary Services, Jonathan Cooper, DVM

Monroe Moreton, DVM

Paul Carruth • Dalton Wood

Lawson Hembree • Gary Grimes, Sr.

Cotton & Associates • Kevin Wendt, CAI • Christy Collins, CCI.Live

Megan Hunt Photography • Morgan Cook, MP Branded

Charlie Weimers, Steady Shots Productions, LLC

Five Oaks Barbecue • LeAnn Ellison, Steffey's Catering • Terry Harris

The Lufkin Roundtable

Sebastian County Sheriff's Department

Lavaca Police Department • Big Creek Fire Department

*Your effort and expertise
 are essential to our success!*



slate group
 think big, print big

Feel-Good* Females with February AI Calves followin' right behind 'em!

Spring PAIRS



Belle Chloe I29 – Lot 62



1A Welytok Mav Erianna 0H9 – Lot 63



Williams Hollywood 700-380 – Sire of Lots 62A and 65A



DB Iconic G95 – Sire of Lot 63A

62 Belle Chloe I29
 Birth Date: 9-4-2019 Cow *19590045 Tattoo: I29

#3F Epic 4631 *Varilek Product 2010 04
 #18379347 *FWY 7008 of C085 4029 Zebu Queen 1072
 #*AAR Ten X 7008 SA
 #*FWY Rita C085

ANGUSGS
 #*VAR Discovery 2240 #*AAR Ten X 7008 SA
 DCF Chloe 5772 #*Deer Valley Rita 0308
 #*18484965 EXAR Chloe 2385 #*Connealy Consensus 7229
 EXAR Chloe 0601

CED	BW	WW	YW	MILK
+8	+5	+67	+117	+24

CWT	MARB	RE	FAT	SM	SW	SB	SC
+48	+1.21	+56	+053	+61	+65	+172	+284

PROVEN FEMALES

Top 3% HS	Top 10% \$B	Top 25% \$W	Top 25% YW
Top 4% Marb	Top 10% \$C	Top 25% PAP	
Top 5% \$G	Top 15% \$AxH	Top 25% WW	

■ Sells with her February bull calf by Williams Hollywood 700-380 at side.

63 1A Welytok Mav Erianna 0H9
 Birth Date: 5-25-2020 Cow +*19790834 Tattoo: 0H9

#*Basin Payweight 1682 #*Basin Payweight 0065
 21AR O Lass 7017
 #*Poss Hoover Dam 2509
 #*Poss Pride 9526

HD50K
 #*Quaker Hill Rampage 0A36 #MCC Daybreak
 Welytok Rampage Erianna 6D74 #*QHF Blackcap 6E2 of4V16 4355
 #*18563775 #*Welytok Total 10 Erianna 3B2 #*AAR Ten X 7008 SA
 Quaker Hill Erianna 8T2

CED	BW	WW	YW	MILK
+0	+2.6	+73	+137	+37

CWT	MARB	RE	FAT	SM	SW	SB	SC
+69	+1.44	+76	+016	+30	+67	+221	+317

PROVEN FEMALES

Top 1% \$AxH	Top 1% \$G	Top 2% \$C	Top 4% Milk	Top 20% \$W
Top 1% \$B	Top 1% Marb	Top 3% \$AxJ	Top 10% YW	Top 20% REA
Top 1% \$F	Top 1% RADG	Top 4% CWT	Top 15% WW	Top 25% Angle

■ Sells with her February heifer calf by DB Iconic G95 at side.

62A BPR Hollywood B174
 Birth Date: 2-10-2024 Bull *20891349 Tattoo: B174

Sire: Williams Hollywood 700-380, +*19850747
 Dam: Belle Chloe I29, *19590045

ANGUSGS

CED	BW	WW	YW	MILK
+5	+1.5	+90	+151	+33

CWT	MARB	RE	FAT	SM	SW	SB	SC
+60	+1.51	+1.01	+0.028	+78	+88	+195	+331

63A Belle Erianna 0H9 B334
 Birth Date: 2-18-2024 Cow *20905659 Tattoo: B334

Sire: DB Iconic G95, *19611994
 Dam: 1A Welytok Mav Erianna 0H9, +*19790834

ANGUSGS

CED	BW	WW	YW	MILK
I+3	I+2.0	I+78	I+142	I+31

CWT	MARB	RE	FAT	SM	SW	SB	SC
I+63	I+1.63	I+.61	I+.044	+42	+71	+213	+318

*feel-good: adjective, causing a feeling of happiness and well-being: a feel-good movie

Take 'em home, turn 'em out and ENJOY watching 'em make \$\$\$!



Belle Rita H19 – Lot 64



Poss Deadwood – Sire of Lot 64A



Poss Rawhide – Sire of Lot 66A

64 Belle Rita H19

Birth Date: 8-8-2019 Cow *19595975 Tattoo: H19
 #Plattemere Weigh Up K360 #Sitz Upward 307R
 SS Samson C4701 #Barbara of Plattemere 337
 +*18496310 *SS Isabel T720 +*GAR Progression
 #SS Isabel T336
 #*VAR Discovery 2240 #*AAR Ten X 7008 SA
 RRR-7 Oaks Rita R0827 +*Deer Valley Rita 0308
 +*18897292 +*DSA New Direction 1022 *B/R Future Direction 4268
 Riverbend Rita S730

CED	BW	WW	YW	MILK			
+7	+1.8	+73	+131	+24			
CWT	MARB	RE	FAT	SM	SW	SB	SC
+59	+1.20	+0.81	-0.039	+63	+67	+195	+316

PROVEN FEMALES				
Top 1% \$AxH	Top 2% \$C	Top 4% Marb	Top 10% YW	Top 15% WW
Top 2% \$AxJ	Top 2% \$G	Top 10% \$F	Top 15% CWT	Top 20% \$W
Top 2% \$B	Top 3% Fat	Top 10% RADG	Top 15% REA	

■ Sells with her February heifer calf by Poss Deadwood at side.
 Maternal Sister to Lot 67.

65 Belle Blackcap I200

Birth Date: 9-10-2020 Cow *19828752 Tattoo: I200
 #*Connealy Black Granite #*Connealy Consensus 7229
 Bar R Jet Black 5063 #Eura Elga of Conanga 9109
 +*18389838 Bar R Iris Anita 0113 #*Sitz Upward 307R
 #Bar Anita 7081
 #*Quaker Hill Rampage 0A36 #MCC Daybreak
 Vintage Blackcap 5424 +*QHF Blackcap 6E2 of 4V16 4355
 +*18212177 +*EXAR Blackcap 2079 #*Sitz Upward 307R
 Exar Blackcap 2407

CED	BW	WW	YW	MILK			
+13	+0.2	+85	+147	+20			
CWT	MARB	RE	FAT	SM	SW	SB	SC
+81	+0.50	+0.84	+0.054	+64	+75	+175	+291

PROVEN FEMALES				
Top 1% \$F	Top 3% \$AxH	Top 10% \$B	Top 15% REA	
Top 1% CWT	Top 3% Angle	Top 10% \$C	Top 25% BW	
Top 2% \$AxJ	Top 3% YW	Top 10% \$W	Top 25% CEM	
Top 2% WW	Top 5% CED	Top 15% RADG	Top 25% PAP	

■ Sells with her February heifer calf by Williams Hollywood 700-380 at side.

66 Belle Empress I570

Birth Date: 9-14-2020 Cow *19828761 Tattoo: I570
 #*Connealy Black Granite #*Connealy Consensus 7229
 Bar R Jet Black 5063 #Eura Elga of Conanga 9109
 +*18389838 Bar R Iris Anita 0113 #*Sitz Upward 307R
 #Bar Anita 7081
 #*Woodhill Daybreak U280-X20 #MCC Daybreak
 Woodhill Empress Z259-B17 +*Woodhill Evergreen 285M-U280
 #17917404 Woodhill Empress X39-Z259 Woodhill Template U179-X148
 Woodhill Empress T315-X39

CED	BW	WW	YW	MILK			
+10	+2.0	+75	+124	+25			
CWT	MARB	RE	FAT	SM	SW	SB	SC
+72	+0.91	+0.83	+0.027	+62	+69	+184	+301

PROVEN FEMALES				
Top 2% \$AxJ	Top 4% \$C	Top 10% WW	Top 15% HPreg	Top 20% CED
Top 3% CWT	Top 4% \$F	Top 15% \$G	Top 15% Marb	Top 20% YW
Top 4% \$B	Top 5% \$AxH	Top 15% \$W	Top 15% REA	Top 25% SC

■ Sells with her February heifer calf by Poss Rawhide at side.

64A Belle Rita H19 B284

Birth Date: 2-13-2024 Cow *20895571 Tattoo: B284
 Sire: Poss Deadwood, *19597261
 Dam: Belle Rita H19, *19595975

CED	BW	WW	YW	MILK			
+7	+2.9	+86	+151	+34			
CWT	MARB	RE	FAT	SM	SW	SB	SC
+80	+1.62	+0.78	+0.007	+77	+81	+232	+378

65A Belle Blackcap I200 B194

Birth Date: 2-10-2024 Cow *20906829 Tattoo: B194
 Sire: Williams Hollywood 700-380, +*19850747
 Dam: Belle Blackcap I200, *19828752

CED	BW	WW	YW	MILK			
+10	+1.6	+103	+180	+28			
CWT	MARB	RE	FAT	SM	SW	SB	SC
+94	+0.98	+1.15	+0.065	+63	+92	+207	+331

66A Belle Empress I570 B304

Birth Date: 2-16-2024 Cow *20901204 Tattoo: B304
 Sire: Poss Rawhide, +*19416968
 Dam: Belle Empress I570, *19828761

CED	BW	WW	YW	MILK			
+12	+0.8	+89	+147	+26			
CWT	MARB	RE	FAT	SM	SW	SB	SC
+75	+0.92	+0.73	+0.043	+57	+83	+183	+294

Somebody said money can't buy happiness. Well, that's not right because money can buy ANGUS COWS and we KNOW they can make you HAPPY.

Coach Prime: "If you look good, you feel good. If you feel good, you play good. If you play good, they pay good."



Belle Rita J220 – Lot 67



Belle Lass E164 J320 – Lot 68



DB Iconic G95 – Sire of Lot 69A

67 Belle Rita J220

Birth Date: 10-11-2020 Cow *19933762 Tattoo: J220
 #*GAR Momentum #**GAR Progress
 GAR Drive #*GAR Big Eye 1770
 *18301470 *Maplecrest Blackcap 3007
 #*Connealy In Sure 8524
 #*Maplecrest Blackcap K9283
ANGUSGS
 Powered by NEOGEN
 #**VAR Discovery 2240 #*AAR Ten X 7008 SA
 RRR-7 Oaks Rita R0827 #*Deer Valley Rita 0308
 +*18897292 #*DSA New Direction 1022 #*B/R Future Direction 4268
 Riverbend Rita S730

CED	BW	WW	YW	MILK			
+10	+9	+70	+121	+28			
CWT	MARB	RE	FAT	SM	SW	SB	SC
+66	+1.32	+0.81	+0.020	+51	+67	+209	+322

PROVEN FEMALES							
Top 1% \$B	Top 2% \$G	Top 15% REA	Top 20% WW				
Top 2% \$AxH	Top 2% Marb	Top 20% \$W	Top 20% YW				
Top 2% \$AxJ	Top 3% \$F	Top 20% CED	Top 25% HPreg				
Top 2% \$C	Top 10% CWT	Top 20% RADG	Top 25% HS				

■ Sells with her February heifer calf by Connealy Resilient 78L at side.
 Maternal Sister to Lot 64.

68 Belle Lass E164 J320

Birth Date: 10-16-2020 Cow *19933814 Tattoo: J320
 #*Basin Payweight 1682 #**Basin Payweight 0065
 21AR O Lass 7017
 Poss Maverick #*Poss Hoover Dam 2509
 *18962396 Poss Pride 5163 #*Poss Pride 9526
ANGUSGS
 Powered by NEOGEN
 #*Connealy Confidence Plus #*Connealy Confidence 0100
 Woodhill Lass B159-E164 Elbanna of Conanga 1209
 *18876769 Woodhill Lass Y122-B159 #*EXAR Denver 2002B
 Woodhill Lass R268-Y122

CED	BW	WW	YW	MILK			
+3	+3.0	+85	+147	+31			
CWT	MARB	RE	FAT	SM	SW	SB	SC
+78	+1.11	+1.06	+0.019	+65	+77	+216	+345

PROVEN FEMALES							
Top 1% \$F	Top 2% \$C	Top 5% WW	Top 10% YW	Top 25% DMI			
Top 2% \$AxH	Top 2% Doc	Top 10% \$G	Top 15% Angle				
Top 2% \$AxJ	Top 4% RADG	Top 10% \$W	Top 20% Marb				
Top 2% \$B	Top 5% CWT	Top 10% REA	Top 20% Milk				

■ Sells with her February bull calf by Connealy Resilient 78L at side.

69 KB-Lucy of 6062 J38

Birth Date: 2-9-2021 Cow +*20057547 Tattoo: J38
 #*Mogck Bullseye #*MOGCK Sure Shot
 Hoover No Doubt Mogck Mary 1255
 +*17882682 *Miss Blackcap Ellston J2 #*SydGen CC&7
 #*Miss Blackcap Ellston D154
ANGUSGS
 Powered by NEOGEN
 #**VAR Discovery 2240 #*AAR Ten X 7008 SA
 Woodside Lucy 6062 of 1746 #*Deer Valley Rita 0308
 +*18569155 #*EXAR Lucy 1746 #*Connealy Consensus 7229
 +Basin Lucy 3829

CED	BW	WW	YW	MILK			
+3	+3.9	+72	+125	+15			
CWT	MARB	RE	FAT	SM	SW	SB	SC
+52	+1.08	+0.88	+0.053	+69	+54	+171	+291

PROVEN FEMALES							
Top 3% Angle	Top 10% \$AxJ	Top 10% \$G	Top 10% SC	Top 25% CWT			
Top 3% Doc	Top 10% \$B	Top 10% Marb	Top 15% WW	Top 25% Claw			
Top 4% \$AxH	Top 10% \$C	Top 10% REA	Top 15% YW				

■ Sells with her February heifer calf by DB Iconic G95 a side.

67A Belle Rita J220 B474

Birth Date: 2-29-2024 Cow 20914940 Tattoo: B474
 Sire: Connealy Resilient 78L, *20132629
 Dam: Belle Rita J220, *19933762

CED	BW	WW	YW	MILK			
I+10	I+1.0	I+74	I+126	I+29			
CWT	MARB	RE	FAT	SM	SW	SB	SC
I+61	I+1.14	I+0.91	I+0.003	+71	+74	+195	+324

68A BPR Resilient 78L C34

Birth Date: 3-5-2024 Bull 20914942 Tattoo: C34
 Sire: Connealy Resilient 78L, *20132629
 Dam: Belle Lass E164 J320, *19933814

CED	BW	WW	YW	MILK			
I+6	I+2.0	I+82	I+138	I+31			
CWT	MARB	RE	FAT	SM	SW	SB	SC
I+67	I+1.04	I+1.02	I+0.002	+78	+81	+197	+334

69A Belle Lucy J38 B224

Birth Date: 2-11-2024 Cow *20896638 Tattoo: B224
 Sire: DB Iconic G95, *19611994
 Dam: KB-Lucy of 6062 J38, +*20057547

CED	BW	WW	YW	MILK			
+7	+2.0	+90	+161	+20			
CWT	MARB	RE	FAT	SM	SW	SB	SC
+69	+1.57	+0.94	+0.066	+60	+73	+207	+328

These FEEL-GOOD PAIRS sure do LOOK good. They're gonna DO good and PAY good, and that is HAPPINESS!



GAR Home Town – Sire of Lot 70



Poss Ratified – Sire of Lot 71A



Belle Blackcap Lady H129 K61 – Lot 72

70 Belle Eisa Erica 5192 H281

Birth Date: 8-13-2021 Cow *20171133 Tattoo: H281

#*GAR Ashland *GAR Early Bird
 *GAR Home Town #*Chair Rock Ambush 1018
 #19266718 *+GAR Sure Fire 6095
 *+Chair Rock Progress 3005

ANGUSGS
 Powered by NEAGEN

Thomas Eisa Erica 5192 #*Plattemere Weigh Up K360
 #18164154 *+Thomas Eisa Erica 8635 #*Sitz Upward 307R
 #Barbara of Plattemere 337
 #*Rito 112 of 2536 Rito 616
 Circle S Eisa Erica 6073

CED	BW	WW	YW	MILK			
+12	+5	+64	+119	+24			
CWT	MARB	RE	FAT	SM	SW	SB	SC
+42	+1.06	+1.10	-.043	+55	+58	+174	+281

PROVEN FEMALES

Top 4% Fat	Top 10% CEM	Top 15% \$AxJ	Top 20% Marb
Top 10% \$G	Top 10% REA	Top 20% \$B	Top 25% \$C
Top 10% CED	Top 15% \$AxH	Top 20% HS	

■ Sells with her February heifer calf by Williams Hollywood 700-380 at side.

71 Belle Evergreen E338 L181

Birth Date: 11-30-2021 Cow +*20264790 Tattoo: L181

#*Musgrave 316 Stunner #*LD Capitalist 316
 DB Iconic G95 #MCATL Blackbird 831-1378
 #19611994 *DB Ms Discovery D13 #*VAR Discovery 2240
 DB Ms Final Tool 4120

ANGUSGS
 Powered by NEAGEN

Woodhill Evergreen B480-E338 #*Connealy Confidence Plus
 #18796165 Cherne Evergreen Y433-B480 #*Connealy Confidence 0100
 Elbanna of Conanga 1209
 Woodhill Stimulus X231-Z42
 #Cherne Evergreen U404-Y433

CED	BW	WW	YW	MILK			
+7	+5	+75	+129	+29			
CWT	MARB	RE	FAT	SM	SW	SB	SC
+53	+1.39	+5.57	+0.046	+84	+77	+183	+321

PROVEN FEMALES

Top 2% \$C	Top 3% Doc	Top 5% \$AxH	Top 15% \$AxJ	Top 20% SC
Top 2% \$G	Top 4% \$M	Top 5% \$B	Top 15% HPreg	Top 25% CWT
Top 2% Marb	Top 4% \$W	Top 10% WW	Top 15% YW	

■ Sells with her February bull calf by Poss Ratified at side.

72 Belle Blackcap Lady H129 K61

Birth Date: 11-2-2021 Cow +*20233323 Tattoo: K61

Connealy Clarity #KCF Bennett Homestead
 #19555171 Cherry Creek Land Grant
 #*Breshie of Conanga 6988 Cherry Crk Eva B27 M
 #*Connealy Confidence Plus
 Brelly of Conanga 367

ANGUSGS
 Powered by NEAGEN

Belle Blackcap Lady H129 #*Connealy Confidence Plus
 #19717258 #*HA Blackcap Lady 1602 #*Connealy Confidence 0100
 HA Blackcap Lady 5515 Elbanna of Conanga 1209
 #*Sitz Upward 307R

CED	BW	WW	YW	MILK			
+10	+1.4	+77	+134	+28			
CWT	MARB	RE	FAT	SM	SW	SB	SC
+58	+1.55	+0.91	+0.001	+88	+81	+205	+354

PROVEN FEMALES

Top 1% \$C	Top 3% \$M	Top 5% \$B	Top 15% YW	Top 25% \$F
Top 2% \$AxH	Top 3% Marb	Top 15% \$AxJ	Top 20% CED	
Top 2% \$G	Top 4% \$W	Top 15% WW	Top 20% REA	

■ Sells with her February bull calf by Basin Step Up 2030 at side.

70A Belle Eisa Erica H281 B314

Birth Date: 2-18-2024 Cow *20906825 Tattoo: B314

Sire: Williams Hollywood 700-380, #19850747
 Dam: Belle Eisa Erica 5192 H281, #20171133

ANGUSGS
 Powered by NEAGEN

CED	BW	WW	YW	MILK			
+4	+1.7	+83	+151	+27			
CWT	MARB	RE	FAT	SM	SW	SB	SC
+65	+1.33	+0.80	-.020	+68	+74	+193	+318

71A BPR Ratified B84

Birth Date: 2-7-2024 Bull *20892698 Tattoo: B84

Sire: Poss Ratified, #20055483
 Dam: Belle Evergreen E338 L181, #20264790

ANGUSGS
 Powered by NEAGEN

CED	BW	WW	YW	MILK			
+11	-.2	+77	+127	+36			
CWT	MARB	RE	FAT	SM	SW	SB	SC
+54	+1.62	+0.82	+0.040	+97	+90	+201	+358

72A BPR Step Up 2030 C24

Birth Date: 3-2-2024 Bull 20914941 Tattoo: C24

Sire: Basin Step Up 2030, #20322585
 Dam: Belle Blackcap Lady H129 K61, #20233323

ANGUSGS
 Powered by NEAGEN
in progress!

CED	BW	WW	YW	MILK			
I+11	I+1.3	I+71	I+123	I+30			
CWT	MARB	RE	FAT	SM	SW	SB	SC
I+50	I+1.51	I+.92	I-.005	+81	+75	+192	+330

FALL Calvers



44 Workday 2206
Service Sire of Lots 73, 74, 75, 76, 79



Riverbend Black Label J1810
Service Sire of Lot 77



Connealy Craftsman
Service Sire of Lot 78



Belle Lucy K28 H311 – Lot 73



EPF Blackcap J102 – Lot 74



Spruce Mtn Fanny 6708 – Dam of Lot 75
Sold to Express Ranches in BPR Sale 2021 for \$11,000

73 Belle Lucy K28 H311

Birth Date: 8-14-2021 Cow *20170797 Tattoo: H311
 #**Musgrave 316 Stunner #**LD Capitalist 316
 DB Iconic G95 #MCATL Blackbird 831-1378
 *19611994 *DB Ms Discovery D13 #*VAR Discovery 2240
 DB Ms Final Tool 4120
 ANGUSGS #**Baldridge Colonel C251 *baldridge Xpand x743
 (Owned by ABCORP) *Baldridge Isabel Y69
 Belle Lucy K28 #*VAR Generation 2100
 *19505083 *SLC Lucy 725 **Riverbend Lucy X009

CED	BW	WW	YW	MILK			
+7	+2	+86	+142	+24			
CWT	MARB	RE	FAT	SM	SW	SB	SC
+58	+1.16	+58	+0.059	+54	+79	+165	+268

PROVEN FEMALES

Top 4% WW Top 5% Doc Top 15% Marb Top 25% \$B
 Top 5% \$W Top 10% YW Top 20% \$G

■ Ultrasounded safe to 44 Workday 2206, due to calve 10/31/2024.

74 EPF Blackcap J102

Birth Date: 8-30-2021 Cow +*20182449 Tattoo: J102
 #**GAR Proactive #**GAR Prophet
 GAR Freedom #*GAR Daybreak 1521
 *19404851 +*RWA Fruition W2025 #*GAR Fruition
 #*GAR Daybreak 2610
 HD50K #**Quaker Hill Rampage 0A36 #MCC Daybreak
 Deer Valley Blackcap 71134 #*QHF Blackcap 6E2 of 4V16 4355
 *18823950 #*Deer Valley Blackcap 51124 #*Plattmehere Weigh Up K360
 #*Deer Valley Blackcap 9822

CED	BW	WW	YW	MILK			
+2	+4.9	+97	+168	+16			
CWT	MARB	RE	FAT	SM	SW	SB	SC
+82	+7.4	+1.33	-.058	+46	+66	+202	+308

PROVEN FEMALES

Top 1% Fat Top 1% YW Top 3% CWT Top 10% \$AxH Top 20% \$G
 Top 1% REA Top 2% \$F Top 4% \$AxJ Top 10% \$C Top 20% HS
 Top 1% WW Top 2% RADG Top 5% \$B Top 10% SC Top 25% CEM

■ Ultrasounded safe to 44 Workday 2206, due to calve 10/31/2024.

75 Belle Fanny 6708 L21

Birth Date: 12-10-2021 Cow +*20238595 Tattoo: L21
 #**Connealy Confidence Plus #*Connealy Confidence 0100
 Connealy Emerald #*Connealy Confidence 1209
 *19257149 Jace of Conanga 6571 #*Connealy Armory
 #*Jazzy of Conanga 4660 860C
 ANGUSGS #**Basin Payweight 1682 #**Basin Payweight 006S
 (Owned by ABCORP) Spruce Mtn Fanny 6708 21AR O Lass 7017
 *18888458 #*2 Bar Cash 3449 #*2 Bar Cash 1723
 #*2 Bar 28 Ambush 1865

CED	BW	WW	YW	MILK			
+12	-1.4	+66	+122	+35			
CWT	MARB	RE	FAT	SM	SW	SB	SC
+50	+9.6	+1.00	+0.016	+72	+74	+168	+290

PROVEN FEMALES

Top 10% BW Top 10% Milk Top 15% \$W Top 20% \$C
 Top 10% CED Top 15% \$AxH Top 15% HPRreg Top 20% \$G
 Top 10% CEM Top 15% \$AxJ Top 15% REA Top 25% \$B

■ Ultrasounded safe to 44 Workday 2206, due to calve 10/31/2024.

76**Belle Ever Entense 5743 I351**

Birth Date: 9-17-2021 Cow *20166130 Tattoo: I351

#3F Epic 4631

*Varilek Product 2010 04

EXAR Monumental 6056B

Zebu Queen 1072

#*18579347

*FWY 7008 of C085 4029

*AAR Ten X 7008 SA

*FWY Rita C085

ANGUSGS
Powered by **NEIGEN**

#*VAR Discovery 2240

#*AAR Ten X 7008 SA

DCF Ever Entense 5743

*Deer Valley Rita 0308

*18257377

*VAR Ever Entense 9082

*Stevenson CE Deluxe 1914

*VAR Ever Entense 7024

CED		BW		WW		YW		MILK	
+8		+3		+77		+127		+27	
CWT	MARB	RE	FAT	SM	SW	SB	SC		
+54	+1.24	+45	+0.041	+79	+77	+168	+297		

PROVEN FEMALES

Top 4% Claw Top 15% \$C Top 15% HPreg Top 20% Angle Top 25% YW
 Top 4% HS Top 15% \$G Top 15% Marb Top 25% \$B
 Top 10% \$W Top 15% \$M Top 15% WW Top 25% CEM

■ Ultrasounded safe to 44 Workday 2206, due to calve 10/31/2024.

77**JACS Blackcap 1504**

Birth Date: 8-29-2021 Cow *20388862 Tattoo: 1504

Poss Easy Impact 0119

#Poss Total Impact 745

Baldrige Alternative E125

Poss Elmaretta 736

#*18837398

Baldrige Blackbird A030

#*Hoover Dam

Baldrige Blackbird X89

ANGUSGS
Powered by **NEIGEN**

#*VAR Discovery 2240

#*AAR Ten X 7008 SA

Woodside Blackcap 5000

*Deer Valley Rita 0308

#*18150642

#*VAR Blackcap 1301

#*Connealy Impression

*Sandpoint Blackcap 7759

CED		BW		WW		YW		MILK	
+8		+1.7		+66		+116		+20	
CWT	MARB	RE	FAT	SM	SW	SB	SC		
+63	+0.85	+0.97	+0.002	+46	+54	+183	+283		

PROVEN FEMALES

Top 1% PAP Top 10% \$AxJ Top 15% \$B Top 25% \$G
 Top 5% CEM Top 10% \$F Top 15% REA Top 25% CWT
 Top 10% \$AxH Top 10% HS Top 25% \$C

■ Ultrasounded safe to Riverbend Black Label J1810, due to calve 9/23/2024.

78**Belle Lucy 5544 K31**

Birth Date: 11-1-2021 Cow *20233422 Tattoo: K31

Cherry Creek Land Grant

#KCF Bennett Homestead

Connealy Clarity

Cherry Creek Land Grant

Cherry Crk Eva B27 M

#*19555171

*Breshie of Conanga 6988

#*Connealy Confidence Plus

Brelly of Conanga 367

ANGUSGS
Powered by **NEIGEN**

#*VAR Generation 2100

#*Connealy Consensus 7229

DCF Lucy 5544

*44 Lucy 1297

*Sandpoint Blackbird 8809

#*18099299

#*Hoover Dam

*Basin Lucy 3829

CED		BW		WW		YW		MILK	
+13		+0		+64		+116		+20	
CWT	MARB	RE	FAT	SM	SW	SB	SC		
+45	+0.91	+0.90	-0.005	+73	+58	+170	+293		

PROVEN FEMALES

Top 10% CED Top 15% \$AxH Top 20% \$C Top 20% REA Top 25% BW
 Top 10% CEM Top 15% \$AxJ Top 20% \$G Top 25% \$B Top 25% Claw
 Top 10% HS Top 15% DMI Top 20% HPreg Top 25% \$M Top 25% RADG

■ Ultrasounded safe to Connealy Craftsman, due to calve 9/23/2024.

79**Belle Ruby 8794 K121**

Birth Date: 11-8-2021 Cow *20233380 Tattoo: K121

Cherry Creek Land Grant

#KCF Bennett Homestead

Connealy Clarity

Cherry Creek Land Grant

Cherry Crk Eva B27 M

#*19555171

*Breshie of Conanga 6988

#*Connealy Confidence Plus

Brelly of Conanga 367

ANGUSGS
Powered by **NEIGEN**

#*VAR Discovery 2240

#*AAR Ten X 7008 SA

44 Ruby 8794

*44 Ruby 6076

*Deer Valley Rita 0308

#*19224757

#*VAR Index 3282

*44 Ruby 2357

CED		BW		WW		YW		MILK	
+7		+1.5		+80		+137		+17	
CWT	MARB	RE	FAT	SM	SW	SB	SC		
+58	+0.94	+0.89	+0.013	+78	+69	+176	+306		

PROVEN FEMALES

Top 10% \$AxJ Top 15% \$AxH Top 15% YW Top 20% \$G Top 25% REA
 Top 10% Doc Top 15% \$C Top 20% \$B Top 20% \$W
 Top 10% WW Top 15% \$M Top 20% \$F Top 20% HS

Exposed to 44 Workday 2206 from 1/15/2024 to sale day. Observed bred on 3/11/24. See sale day update.



PF 7008 Rita 3531, maternal granddam of Lot 80 and dam of Rita 8657, pictured below



\$75,000 second high-selling bred heifer of 2020 Pollard Sale to Express Ranches

Safe to Sexed Kindred**80****Pollard Rita 1556**

Birth Date: 8-7-2021 Cow *2018519 Tattoo: 1556

#*Casino Bomber N33

#*KM Broken Bow 002

EXAR Grenade 9152B

*EXAR Merle 7441

#*Casino Annie K48

#*19358194

#*Sitz Top Game 561X

ANGUSGS
Powered by **NEIGEN**

#*Basin Payweight 1682

#*Basin Payweight 0065

Pollard Rita 9141

*PF 7008 Rita 3531

21AR O Lass 7017

#*19392607

#*AAR Ten X 7008 SA

*EXAR Rita U049

CED		BW		WW		YW		MILK	
+3		+1.9		+92		+158		+32	
CWT	MARB	RE	FAT	SM	SW	SB	SC		
+81	+0.65	+0.89	+0.041	+71	+89	+186	+312		

PROVEN FEMALES
 Top 1% \$W Top 2% YW Top 10% \$AxJ Top 15% \$B Top 25% REA
 Top 2% \$F Top 3% CWT Top 10% \$C Top 15% Milk
 Top 2% WW Top 5% RADG Top 15% \$AxH Top 25% CEM

■ Ultrasounded safe to sexed K A Kindred, due to calve 9/23/2024.

Pollard Rita 1556 was at side of her dam when we purchased her in the 2021 Pollard Sale. Her maternal granddam, Rita 3531, produced multiple top-sellers for Pollard Farms, most notably in the 2020 sale where Rita 8657 by Monumental sold to Express Ranches for \$75,000 for half interest and another 3531 daughter, Rita 8560, by Colonel brought \$35,000 from Nowatzke Cattle Co. We gave \$14,500 for Rita 9141, sired by Payweight 1682, as the third high-selling fall pair of 2021.

Lot 80's sire, Grenade, is represented by ORigen. He was the anchor bull of the 2020 National Western Grand Champion Carload, and his dam was the \$320,000 top-selling donor of the 2020 Express Big Event Sale selected by Spruce Mountain Ranch and Deer Valley Farm.

Phenotypically and genomically, Rita 1556 is at the top of this group, plus she's carrying a heifer calf by Kindred. Don't spend time wondering about the sale order. Pollard Rita 1556 EARNED our official designation: "GOOD ENOUGH TO SELL LAST!"

We appreciate Barry Pollard's LEADERSHIP ROLE in the Angus Breed.

It was early morning at the Fort Worth Stock Show and our friend Raymond Moore of Lufkin, Texas noticed Barry Pollard and a cowboy on his crew in the parking lot trying to solve a little problem involving keys inside a locked truck. A highway contractor who owned a lot of trucks and had experienced just such a dilemma himself a time or two, Raymond ambled over and boomed in his East Texas accent, "Y'all need some help?" Dr. Pollard calmly deadpanned, "It's not brain surgery."

There's deeper meaning in that humorous reply. This is what I know for sure: breeding and selling top quality Angus cattle is not brain surgery. Selling and servicing John Deere equipment isn't brain surgery. Serving two terms on the American Angus Association board of directors, then taking on three more years of work (and time!) going through the executive ranks to serve as AAA president, well, that's not brain surgery either. But Barry Pollard applies to each of those endeavors the same intelligence, insight, skill and dedication that he gave to saving lives as a neurosurgeon. It's who he is, and one of the reasons we've always been an Angus customer of Pollard Farms. The other reasons? GOOD CATTLE like Lot 10, Lot 24 and Lot 80!

This business is about relationships and we look forward to many more years as your friend and customer – THANK YOU!



Top Cut Yearling Bulls



GAR Home Town – Sire of Lot 81



Basin Deposit 1181 – Sire of Lot 82



DB Iconic G95 – Sire of Lot 83

INVEST in a Top Cut Yearling Bull and DEVELOP him well. He'll get the JOB done and you'll get PAID for his work!

81 BPR Home Town A113

Birth Date: 1-8-2023 Bull *20562396 Tattoo: A113

GAR Home Town *19266718
 #*GAR Ashland
 *GAR Early Bird
 **Chair Rock Ambush 1018
 +*Chair Rock Sure Fire 6095
 #*GAR Sure Fire
 **Chair Rock Progress 3005

ANGUSGS
Powered by NEOGEN

Belle Emblynette J270 *19933799
 *GAR Drive
 #SAV Emblynette 3156

#*GAR Momentum
 *Maplecrest Blackcap 3007
 #*Connealy Cavalry 1149
 #SAV Emblynette 7415

CED	BW	VW	YW	MILK			
+13	-.9	+50	+91	+24			
CWT	MARB	RE	FAT	SM	SW	SB	SC
+31	+1.17	+.95	+.012	+72	+53	+167	+289

NON-PARENT MALES				
Top 3% CEM	Top 10% \$G	Top 15% \$AxH	Top 15% Marb	Top 25% \$B
Top 3% PAP	Top 10% CED	Top 15% \$AxJ	Top 15% REA	
Top 4% DMI	Top 10% Doc	Top 15% BW	Top 20% \$C	

■ BW: 63, Adj. 205: 675, YW: 1,155

Sired by the record-selling proven multi-trait leader Home Town, this calving-ease, PAP and Marb. prospect was produced by a member of the herd sire producing Emblynette family who combines the carcass sire Drive and the female sire Cavalry 1149.

82 BPR Deposit 1181 A263

Birth Date: 1-28-2023 Bull *20623260 Tattoo: A263

Basin Deposit 1181 *20096257
 **Basin Deposit 9583
 +*Basin Joy 2006
 +*Basin Adventure 6275
 *Basin Eileenmere 5059

ANGUSGS
Powered by NEOGEN

Belle Blackcap J140 *19933764
 *GAR Drive
 *Pollard Blackcap 7000

#*GAR Momentum
 *Maplecrest Blackcap 3007
 #*VAR Discovery 2240
 +*Spruce Mtn Blackcap 5036

CED	BW	YW	VW	YW	MILK		
+11	+1.0	+71	+119	+14			
CWT	MARB	RE	FAT	SM	SW	SB	SC
+43	+1.26	+1.07	-.022	+78	+60	+181	+313

NON-PARENT MALES				
Top 2% CEM	Top 10% \$AxJ	Top 10% Marb	Top 15% \$B	Top 15% Fat
Top 4% \$AxH	Top 10% \$C	Top 10% PAP	Top 15% \$M	Top 20% Doc
Top 4% \$G	Top 10% Angle	Top 10% REA	Top 15% CED	Top 25% DMI

■ BW: 55, Adj. 205: 699, YW: 1,248

This low-birth, PAP and carcass bull sired by the Belle Point herd sire Deposit 1181 was produced by a first calf heifer dam who blends the Hillhouse Angus, Ankony and Mapleton Farm sire Drive with a proven and productive daughter of Discovery.

83 BPR Iconic B233

Birth Date: 2-19-2023 Bull *20626752 Tattoo: B233

DB Iconic G95 *19611994
 #*Musgrave 316 Stunner
 *DB Ms Discovery D13
 #*LD Capitalist 316
 #MCATL Blackbird 831-1378
 #*VAR Discovery 2240
 DB Ms Final Tool 4120

ANGUSGS
Powered by NEOGEN

Belle Kem 1989 *19934209
 #*TEX Playbook 5437
 +*Spruce Mtn Kem 7519

#*Basin Payweight 1682
 +*Rita 1C43 of 9M26 Complete
 #*Basin Advance 3134
 +*VVAR Kem 3382

CED	BW	VW	YW	MILK			
+12	-.8	+68	+115	+40			
CWT	MARB	RE	FAT	SM	SW	SB	SC
+48	+1.16	+.35	+.068	+79	+83	+154	+279

NON-PARENT MALES			
Top 2% Milk	Top 10% CEM	Top 15% Marb	Top 25% \$AxH
Top 3% \$W	Top 15% \$M	Top 20% \$G	Top 25% \$C
Top 10% CED	Top 15% BW	Top 20% Doc	

■ BW: 54, Adj. 205: 690, YW: 1,149

Low-birth, Marb., and \$W prospect produced by a second-generation Belle Point Kem and sired by the longtime leader of the Genex roster, Iconic.

BELLE POINT RANCH BREEDING BULL GUARANTEE

Because we value your business, we put forth every effort to ensure the integrity of our cattle, our records, and our management and business practices.

Bulls declared by a Breeding Soundness Exam (BSE) to be "satisfactory potential breeders" are guaranteed for the upcoming breeding season, provided they have been maintained at the same standard of nutrition and care they have received here. The yearling bulls in this sale (Lots 20, 81, 82 and 83) are offered to you with the understanding that they must continue to be developed by you, and attentively managed in breeding cows, until they reach full maturity. Should an issue arise with your bull, report it to us immediately. We may ask you to return the bull to Belle Point Ranch so we can consult our veterinarian for his evaluation of the bull. If the bull's deficiency is determined to be our responsibility, we pledge to address the situation promptly to arrive at an outcome that is fair and square!

Come to Belle Point for TWO Sales in ONE Day, in ONE Location!

Springtime REVIVAL

SHORTHORN SALE
Saturday, April 20 at 4 pm CST
Hosted by Belle Point Ranch



To view catalog ONLINE
scan this QR Code



FANCY SHOW HEIFERS • HERD BUILDER FEMALES • ELITE EMBRYOS & HEIFER PREGNANCIES • HERD SIRE PROSPECTS • EXCLUSIVE SEMEN



Lot 15



Lot 12



Lot 1



Lot 29



Lot 32



Lot 31

**SHORTHORN
BULLS**

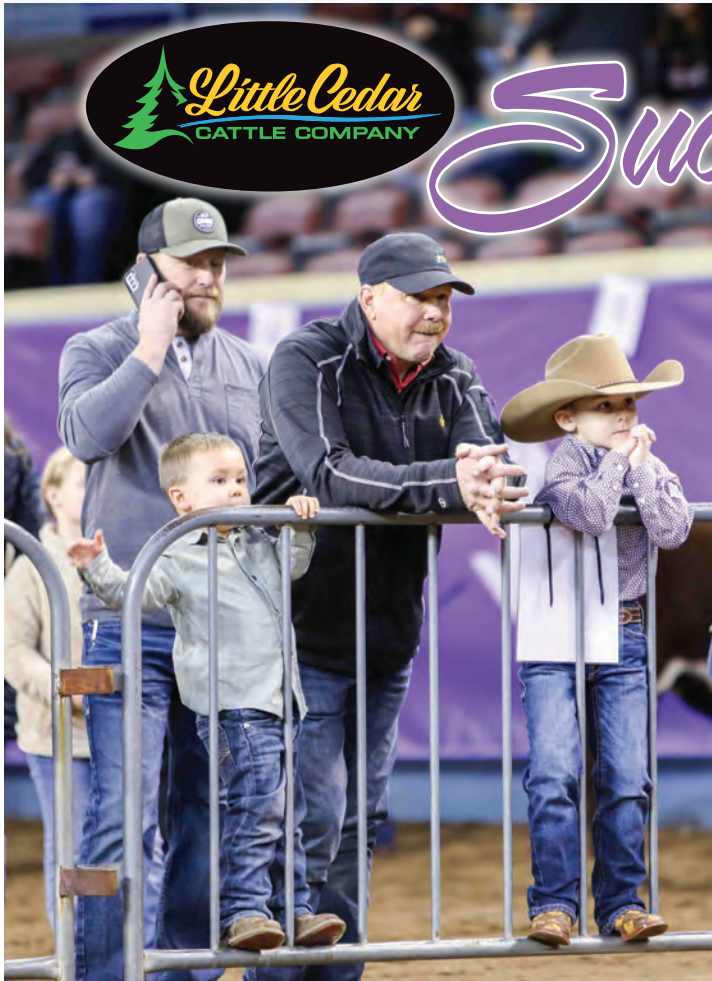


Scan this QR code to hear ANGUS breeder Charles Rosson of Quaker Hill Farm, Virginia share his SUCCESS using SHORTHORN bulls in his HIGH QUALITY BEEF crossbreeding program, "Of all the breeds you can cross on Angus, I think Shorthorns are best!" Check out these PRIME Shorthorn x Angus STEAKS!



Steve & Julie French
Phone calls welcome 989-798-8223
www.redwhiteandroan.com

We've made it easy and safe to PARK trailers & vehicles and LOAD OUT cattle!



Success!



BFS LCCC AFLC DIRECT DEPOSIT 2254 ET
2024 Cattlemen's Congress Grand Champion Bull
2024 National Western Grand Champion Bull
 Bollum Family Shorthorns, Little Cedar Cattle Co. & Armstrong Farms



We welcome your visit to Belle Point on sale day – and any other day too!

HOTEL HEADQUARTERS

Located east of downtown in the area of Airport/Mercy Hospital
7300 Phoenix Avenue, Fort Smith, Arkansas, 72903

FAIRFIELD INN & SUITES – 479-755-3111

7601 Phoenix Ave., Fort Smith, AR 72903

HOLIDAY INN EXPRESS – AIRPORT – 479-484-7111

7111 Phoenix Ave., Fort Smith, AR 72903

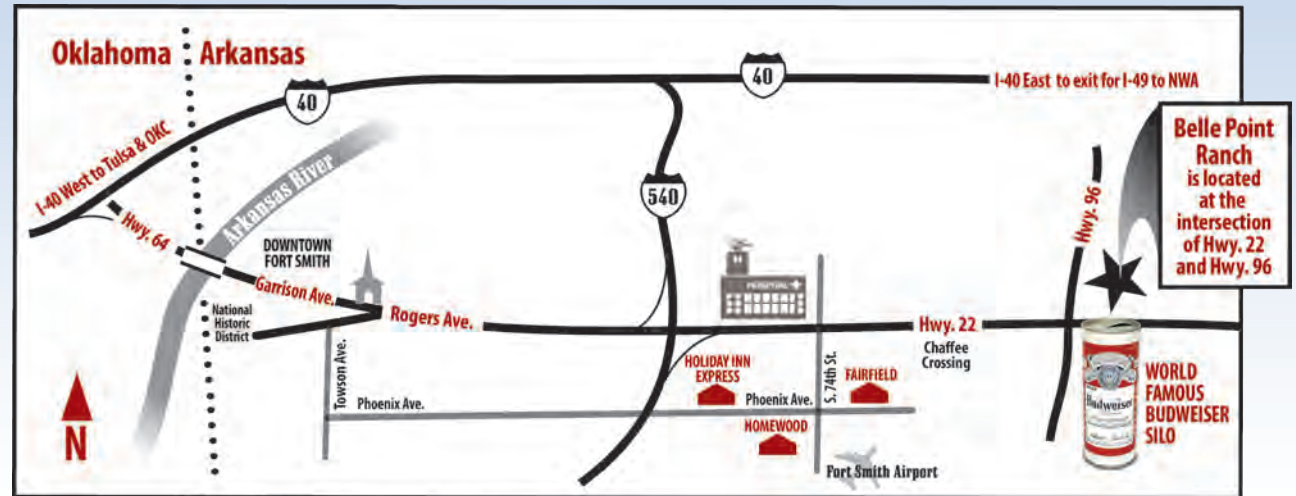
HOMWOOD SUITES – 479-452-7100

7300 Phoenix Avenue, Fort Smith, Arkansas, 72903

Visit our website to access links for online reservation.
Or, call the hotels directly.

Room Blocks: Belle Point & Revival Cattle Sales

For other hotel options in the Fort Smith area, visit: www.fortsmith.org



SALE EVENTS

Preview the sale lots on Friday

Come take a look around on Friday throughout the day until feeding time at 5 pm. Snacks & refreshments will be available.

Friday evening, there are lots of great restaurants located in the hotel area, and in downtown Fort Smith as well where you'll find lively nightlife. Visit www.fortsmith.org for ideas!

Saturday morning, sort the pens starting at 8:00 am. Stop by the Coffee Bar in "The Mezzanine" for a cuppa joe and a morning snack.

Saturday lunch is served at 11:00 am. You'll love Five Oaks Barbecue Brisket 'n Pork Sliders & Famous Pit Beans along with Freshly Made Rolls and Sides by LeAnn Ellison. We make it easy to enjoy a great lunch whenever you want to eat!

Throughout the day, an array of our many fine beverages will be served, and lots of snacks will be available "free choice!"

PRE-REGISTER on CCI.Live or at the settlement desk on Saturday morning to be sure we have your current information.

CHECK-OUT at the settlement desk before you leave.

LOAD-OUT will begin 15 minutes after conclusion of the sale. If you're coming back Sunday, or another day, please let us know!

TRAILER PARKING We've created a safe and easy place to park trailers on the NORTH SIDE of Hwy. 22, east of Hwy. 96 traffic light. Turn in at the sign. See map on page 50.

It's Easy To Get To Belle Point!

Fort Smith, Arkansas is 4 miles south of I-40 on the Arkansas-Oklahoma state line.

Flip to page 52 for ranch location, driving directions, and info on convenient airports in Fort Smith, Northwest Arkansas and Tulsa.



Experience Fort Smith

www.fortsmith.org

The original gateway to the Wild West, our city was the last stop between modern civilization and the untamed wilderness of Indian Territory, now modern day Oklahoma. In the heyday of old Fort Smith, a popular saying went, "There is no law west of St. Louis and no God west of Fort Smith."

Fort Smith played a significant role throughout our nation's history during its frontier days, providing inspiration to the film classic "True Grit," and many other western movies. Judge Isaac C. Parker held court for the Federal Government in the Western District of Arkansas just before the turn of the century. Experience that history firsthand at the Fort Smith National Historic Site. The new National U.S. Marshals Museum highlights the 220-year history of the nation's oldest law enforcement agency on the very spot where much of the most dangerous Marshals Service history took place. Tour the Fort Smith Museum of History and browse downtown for antiques and unique shopping. If you like antiques and wonderful old cities make time to visit historic Van Buren across the Arkansas River.

Downtown Fort Smith is more than a little civilized today – but still lots of fun! You will enjoy excellent restaurants, friendly bars and lively music venues on Garrison Avenue. The amazing murals painted on downtown buildings by "The Unexpected" has brought urban contemporary art to downtown. The project has transformed our city into a world-class destination for urban and contemporary public art. (Visit www.unexpectedfs.com/art)

Welcome!

FRIDAY, April 19

SATURDAY, April 20

All day

PREVIEW the sale cattle 'til 5 pm. You're welcome any day before the sale too! Please give us a call.

8:00 am

PREVIEW the sale offering. Enjoy the Coffee Bar and Morning Snacks served in "The Mezzanine"

11:00 am

Delicious Five Oaks Barbecue Brisket & Pork Sliders & Famous Pit Beans with Freshly Made Sides & Sweets

11:30 pm

"The Pathway to Opportunity" Angus Auction

4:00 pm

"Springtime Revival" Shorthorn Auction

★ As always, an array of our many fine beverages will be served and lots of snacks will be available all day "free choice!"

SALE LOCATION and DRIVING DIRECTIONS

DIRECTIONS TO BELLE POINT RANCH, LAVACA **Look for our famous Budweiser Silo!**

- GPS Location: 20906 Hwy. 22, Lavaca, Arkansas, 72941
- Google Maps: Belle Point Ranch, Lavaca, Arkansas
- From I-40 East (ARKANSAS), take Exit 7 for I-540 South. Take Exit 3, turn left at light and follow Hwy. 59 8 miles to Hwy. 22, turn left (east) and go 6 miles to intersection of Hwy. 22 and Hwy. 96.
- From I-40 West (OKLAHOMA), exit #325 at Roland, Oklahoma. Go through Roland, cross Arkansas River bridge, follow Garrison Ave. merge to Rogers Ave./Hwy. 22. Go east 16 miles to intersection of Hwy. 22 and Hwy. 96.
- From HQ Hotels, take Rogers Ave./Hwy. 22 east 9 miles to the intersection of Hwy. 22 and Hwy. 96.
- FORT SMITH Airport is served by American Eagle to Dallas-Fort Worth. (www.flyfsm.com) FS Airport is 9.9 miles from the ranch. We will provide transportation to and from the Fort Smith Airport, please call the Fort Smith office or sale day phones to make arrangements. Excellent private service is available in Fort Smith, call us for info.
- NORTHWEST ARKANSAS National Airport is an EASY 90 minute drive from Fort Smith. (www.flyxna.com) 50 flights/day to 26 destinations are easy to access at "XNA" in Northwest Arkansas (Bentonville, Fayetteville, Springdale and Rogers).
- TULSA International Airport (www.tulsaairports.com) is an EASY 2-hour drive from Fort Smith. Tulsa is served by all major airlines.

NORTH SIDE TRAILER PARKING

Safe overnight parking for trailers is located on the NORTH SIDE of Hwy. 22. East of Hwy. 22 & 96 traffic light, turn at the sign. See page 50!

AIR TRAVEL Three Convenient Options

HOTEL HEADQUARTERS

Call hotel of your choice directly OR scan the QR Code to access a link to make reservation online.

- Fairfield Inn & Suites – 479-755-3111, 7601 Phoenix Ave., Fort Smith, 72903
- Holiday Inn Express - Airport – 479-484-7111, 7111 Phoenix Ave., Fort Smith 72903
- Homewood Suites – 479-452-7100, 7300 Phoenix Avenue, Fort Smith, 72903

Hotels are located in midtown area of Fort Smith near Fort Smith Airport and Mercy Hospital near a variety of restaurants and convenient shopping. **ASK FOR ROOM BLOCK: Belle Point & Revival Cattle Sale** Great restaurant choices in the hotel area, and you'll also enjoy the dining & nightlife in downtown Fort Smith. Visit www.fortsmith.org for ideas!



WATCH & BID ONLINE



Videos of ALL Sale Lots are posted on CCI.Live

AUCTION STAFF

AUCTIONEER

Kevin Wendt, CAI (419) 566-1599
The Wendt Group, Inc., Plain City, Ohio

COTTON & ASSOCIATES (517) 546-6374 Michigan office

Larry Cotton (517) 294-0777 Mike Gothard (540) 894-1055
Ryan Cotton (706) 206-8361 Jerry Crenshaw (703) 244-4767

RING STAFF

Shawn Gray, Angus Journal (352) 425-9326
William Harsh, Angus Journal (740) 272-1386
Cas Salley, Oklahoma Cowman (918) 855-3152

SALE CONSULTANTS

Terry Cotton, Cotton Cattle Sales & Service (816) 390-3227
Matt Myers, Myers Cattle Services, LLC (405) 315-7258
Jeff Aegerter, Aegerter Marketing Service, (402) 641-4696

BPR CONTACTS

Julie McMahon French Cell/Text: (989) 965-6363
Steve French Cell/Text: (989) 798-8223
Madeline Taylor Cell/Text: (479) 831-9171
Anthony Wood Cell/Text: (479) 739-1182

BUSINESS OFFICE
Claire Taylor Matlock Cell/Text: (479) 650-4665
Susan McMahon Taylor Office: (479) 782-5579
E-MAIL ADDRESS: ranch@bellepoint.com

Watch LIVE Sale Preview "Sortin' the Sale Pens"

Friday, April 19 – 6 pm CST

Facebook@BellePointRanch

Hosted by Kevin Wendt

with Steve French and Ryan Cotton

BELLE POINT Fair and Square GUARANTEE

Because we value your business, Belle Point Ranch puts forth every effort to ensure the integrity of our cattle, our records and our management practices. Should an issue arise with your purchase we ask you to report it to us immediately. If more information is necessary, we will proceed together with a timely and thorough investigation that may involve consulting a licensed veterinarian. Once responsibility is determined, we pledge to address the situation promptly to arrive at an outcome that is fair and square!

HERD HEALTH

- Bulls, Cows, ET Recipients and Replacement Heifers are treated pre-breeding with Express 5FP VLS, Alpha 7 MB, Endovac; Cows and Heifers receive Express 5FP VLS at preg-check. All animals over one year of age are vaccinated for Anaplasmosis.
- Calves are treated at birth with Multimin 90, Inforcen and Iodine, and at 3 months with Cattlemaster Gold FP5, Ultrabac7/Somnubac and Endovac.
- Calves are treated at weaning with Bovishield Gold One Shot; Ultrabac7/Somnubac, Pinkeye Shield and Dectomax and post-weaning with Bovishield Gold 5 and Addison Moraxella Bovoculi Bacterin.
- Supplements: Purina® Rangeland® 38 Hi-E Tubs, VitaFerm® Heat® and Concept-Aid®

SALE ORDER – Just follow the lot numbers!

The cattle will sell in catalog order starting with Lot 1! Ear tags on the cattle will correspond to the lot numbers in this catalog. Ear tags on calves at side of dam will correspond to dam's number. Footnotes in this catalog have been reduced to the breeding status of the cattle selling, with a few exceptions.

Catalog EPDs are current as of 3/15/24. EPDs may change weekly, view updates at www.angus.org.

AFTER SALE CARE & SHIPPING

Sale cattle will be accompanied with proper health certificates for immediate shipment. Belle Point Ranch will care for each lot in the sale for a reasonable amount of time. Please discuss your needs with us prior to the sale, and be sure your plans are noted at the settlement desk.

Truckers believed to be reliable will be available to assist you in making shipping arrangements. We will certainly do our part to help make your shipping arrangements happen! We are no longer able to provide delivery free of charge.

ALL LOTS ARE FULLY INSURED – ADDED VALUE!

Full mortality insurance has been obtained by Belle Point Ranch on all eligible cattle selling on April 20, 2024 with James F. Bessler LLC, Fort Worth, Texas. Coverage in the amount of the purchase price is effective at the fall of the auctioneer's hammer, for a term of 30 days from the day of the sale or until cattle arrive at their destination, whichever is shorter. Calves selling at side of dam will be insured for 25 percent of the purchase price of the lot. Calves under two weeks of age are ineligible for this insurance coverage. However, they are still fully guaranteed by Belle Point Ranch.

If you have a claim or additional insurance needs, contact Jim Bessler Cell: 815-762-2641, Office: 817-562-8980 or E-mail: jjm@jamesbessler.com.

IMPORTANT POLICIES

Breeding & Pregnancy Checking

Females in this sale have been bred AI or exposed to only the bulls listed in the footnote. Bred cows were pregnancy checked by ultrasound on 2/22/24 and 4/15/24. Pregnancy status as of sale day will be confirmed on the Update Sheet.

Safe Females "60 Day" Policy

Buyer must take on the responsibility of closely monitoring a safe female (through heat detection) for the first 60 days after the sale to be certain she stays safe in calf. Belle Point Ranch will offer a "Fair and Square" adjustment to the sale price if a cow is determined by a licensed veterinarian to be "open" within 60 days of the sale. Buyer must contact Belle Point no later than June 18, 2023 to report an open female.

Breeding Bull Guarantee

A breeding soundness exam (BSE) will be performed by our veterinarian on all bulls that have reached the maturity recommended for the exam. Bulls declared to be "satisfactory potential breeders" are guaranteed for the upcoming spring breeding season, provided they are maintained at the same standard of nutrition and care received here. Younger bulls are offered with the understanding that they must continue to be developed by the buyer until they reach maturity for a BSE. Should an issue arise with your bull report it to us immediately. We may ask you to return the bull to Belle Point so we can consult our veterinarian for his evaluation of the bull. If the bull's deficiency is determined to be our responsibility, we pledge to address the situation promptly to arrive at an outcome that is fair and square!

Breeding Privileges

Breeding privileges to Belle Point herd sires may be offered on SELECTED FEMALES selling in this sale. The offer of this privilege will be stated on the Update Sheet and announced from the auction block.

Semen Rights

Belle Point Ranch retains the right to obtain 100 straws of semen per year on any bull sold in this sale (born or unborn) at the cost of production, and to purchase A.I. certificates at AAA cost.

Belle Point Ranch
The David McMahon Family • Lavaca, Arkansas
www.bellepointranch.com

FORT SMITH OFFICE

Office Phone: (479) 782-5579 Office Fax: (479) 782-8210
Mailing Address: P.O. Box 517, Fort Smith, Arkansas 72902
Ranch E-mail Address: ranch@bellepoint.com

RANCH OFFICE – Wed. 4/17 through Sat. 4/20
Please leave a Voice Message (479) 674-5143

*Get in touch with us easily
via cell/text or e-mail!*

See contact info on page 52.

Belle Point Ranch

The David McMahon Family
P.O. Box 517, Fort Smith, Arkansas 72902
www.bellepointranch.com

Presorted
First Class
US Postage
PAID
SLATEGROUP

FIRST CLASS MAIL • RETURN SERVICE REQUESTED • DATED MATERIAL

THE PATHWAY TO *Opportunity* Annual Angus Production Sale



Saturday, April 20, 2024 11:30 a.m.
at the ranch and online

