

An aerial photograph of a large ranch property during a dramatic sunset. The sky is filled with colorful clouds in shades of orange, yellow, and blue. The sun is low on the horizon, casting a warm glow over the landscape. The ranch features several large buildings, including a prominent red barn and a white house, surrounded by open fields and a winding road. In the foreground, a body of water reflects the sky and the surrounding trees.

The Pathway To *Opportunity*

Belle Point Ranch

Saturday, March 28, 2020 12:30 p.m.

Lavaca, Arkansas



RANCH CREW

Anthony Wood
Ranch Manager
Madeline Taylor
Cow Herd Coordinator
Claire Matlock
Administrative Coordinator
Julie and Steve French
Strategic Plans, Marketing & Sales
Purchasing, AI & ET Matings
Dakota Sotherland
David McGee
Alex Fuller
Dalton Wood
Tray Werner
Gary Grimes, Jr.

Belle Point Ranch

Mary Ann McMahon and the McMahon Family

Mary Lynn & Marvin Holland • Matt & Marie Holland and Roselynn & Glendon • Andrew Holland
David & Tammy McMahon • Aaron McMahon • Kerri McMahon
Kathleen & Tim McGuire • Allyson McGuire • Kimberly McGuire • Tim McGuire, Jr. & Abby Arterbury
Julie & Steve French
Susan & Rick Taylor • Audrey Taylor • Christine Taylor • Madeline Taylor
Claire & Phillip Matlock and Taylor, Ethan & Emma
Belle Point Beverages, Inc. Management Staff & Employees

Cover photos by Camp Creek Photography • FAA Licensed Drone Photographer • 479-414-5718

VETERINARIANS

Monroe Morton, DVM
Mark Sharp, DVM
Zac Phillips, DVM
Chris Ashworth, DVM

SALE CREW

Andrew Branstetter
Ken Creese
Ronnie Johnson
Brian Bates
Justin "Doc" Lehnert

All because of the Angus Cow

Early this year, Martha Stewart Living digital newsletter published "throwback photos" of Martha as a young woman, before she became a lifestyle expert and media mogul. One very intriguing shot, Martha with poofed hair and hand on hip posing alongside an Ayrshire cow, brought this priceless photo of Mary Ann immediately to mind!

Prior to being recruited to take hold of the halter for this 1959 photo, you would say Mary Ann was definitely a "city girl." Raised a few blocks from our church and school at the head of Garrison Avenue, her aptitude for science, inherently "techy" orientation, and interest in medicine directed her education toward a career as a surgical nurse. In her job working for a busy surgeon, she was a detail manager, a problem-solver, a very good listener and communicator, and, most of all, a caring, helpful advocate for the welfare of her patients.

Little did she know she would give her heart to a boy she knew in grade school, and establish a lifelong relationship with Angus cows! (That's Dave in the lower right corner, by the way. How the heck did he talk her into hanging on to that bull? About twenty years later he found out you could pay talented people a lot of money to take excellent photographs of cattle and, from then on, he certainly did!)

Mary Ann's nursing skills served her well as she embarked on the new role "farm wife." Forty acres on the outskirts of Fort Smith wasn't quite homesteading. To her, it may have seemed pretty close. In time, when she was recruited ("voluntold" by her husband) to become a 4-H leader Mary Ann enthusiastically jumped into learning about cattle right along with the kids. Naturally, this created opportunities to step in to glamorous and pivotal jobs like chief tail teaser on show days. (She had the hairdo thus the talent and experience, so she was in demand.)

Upon expansion of the herd to the ranch at Lavaca in the mid-70s, Dave recruited her to develop a cattle recordkeeping system. Her high degree of detail orientation and organizational skills soon took his idea of a herd database well past scribbles on the back of Polaroid pictures. Next, she was recruited to enroll with him at Graham School for Cattlemen to learn AI, pregnancy checking, and all that goes into managing a purebred herd reproduction system. (Mary Ann tells an incredible story about her "100%" AI breeding record. Maybe you've heard it?)

Planning for our first sale in 1978, Dave directed her to assemble all the facts and figures he needed to devise a creative and unique catalog to market the cattle. She was efficient and produced results fast. So Dave sprung another BIG IDEA on her. He "enlisted" Mary Ann to "draft" a few friends to help her make giant batches of the gravy recipe she'd concocted from Dave's mess hall memories to serve a home-cooked (literally!) country breakfast to a battalion of Angus breeders on sale morning. The next year the process moved to a commercial church kitchen, and now our "Army Breakfast" is made and packaged for freezing a month before the sale by the women in the family, "conscripted" into a fun day of service with "Mess Sergeant" Mary Ann presiding – every year, for 43 years! (A hilarious journal chronicles this annual event.)

It's been 61 years since the McMahon family bought Kermac Marshall 115 (Calved 1/12/1959, Tattoo H91, AAA 2893705) and started a lifelong endeavor breeding Angus cattle. Mary Ann has been "at the lead" on every step of our evolutionary pathway, providing support and managing the details for her husband and children, ranch employees, then grandchildren and, now, the "greats." She embraced David's dream to raise Angus cattle, and she worked with him to make it a reality, and a viable, successful ranching business. Long before Martha Stewart came along, Mary Ann was an expert at creating the "picture perfect" lifestyle for her family – our Angus lifestyle – and we are truly grateful!



**We can't think of
any investment
that has paid off as
well as Angus cattle!**

**We want to succeed in the
Angus business, and we
want you to come along
with us on the path.**

*Your time and effort to be with us on
March 27 & 28 – in person, on the phone,
the internet, or in spirit is appreciated!*

*Please
join us
this year!*

**We look forward to building relationships with all the folks who come to Belle Point
as customers...and leave as friends. As Dave would say, "All because of the Angus cow!"**

the **Best** BRAND NAMES in the business!

**We put these
HIGH VALUE
Herd Sires on
our "payroll"
assigned with
a specific job:
delivering \$\$\$.**

For many years Belle Point Ranch has made a significant financial investment in herd sires bred by the leading Angus operations in the country – the best brand names.

We will continue to acquire, prove and promote our own herd sires, and their herds of origin.

Our herd sires are not considered by us to be "clean-up bulls." Their role is essential in our practical management system, and they are very effective ensuring that we produce calf crops that make money.

Belle Point's herd sires are featured on pages 2 and 3. You can see them and their progeny here on the ranch March 28.



44 Strike Force 6003

**All-around improvement specialist.
His Lot 14 daughter is featured to tell his story!**



44 Handshake 7278

**Complete and powerful.
Dam is direct daughter of Lucy 11209.
Lot 1 of 2018 44 Farms Bull Sale.**



His dam J/R Queen of New Design 356H

*18550953

SIRE: Rito 3S10 of 9Q15 Progress

DAM: J/R Queen of New Design 356H, by Summitcrest Complete 1P55

CED		Birth		Weaning		Yearling		SC		Milk	
EPD	ACC	EPD	ACC	EPD	ACC	EPD	ACC	EPD	ACC	EPD	ACC
+13	.38	+9	.61	+57	.42	+103	.36	+75	.40	+35	.28

CW		Marb		RE		FAT		Beef Value	Combined Value
EPD	ACC	EPD	ACC	EPD	ACC	EPD	ACC	\$B	\$C
+54	.37	+1.03	.34	+1.02	.34	+0.19	.30	+168	+266

Bred by Pearcy Angus Ranch LLC, Fairy, TX

Top 3% for RE, Top 4% Milk



His dam 44 Lucy 4775

**Direct daughter of the
herd sire maker Lucy 11209**

+*18863642

SIRE: 44 Arsenal 4W07

DAM: 44 Lucy 4775, by VAR Discovery 2240

CED		Birth		Weaning		Yearling		SC		Milk	
EPD	ACC	EPD	ACC	EPD	ACC	EPD	ACC	EPD	ACC	EPD	ACC
+1	.35	+3.4	.57	+87	.45	+157	.39	+1.07	.43	+18	.30

CW		Marb		RE		FAT		Beef Value	Combined Value
EPD	ACC	EPD	ACC	EPD	ACC	EPD	ACC	\$B	\$C
+77	.42	+60	.38	+1.28	.38	-.048	.34	+208	+319

Bred by 44 Farms, Cameron, TX

Top 1% for WW, YW, RADG, MW, CW, RE, \$F and \$B

44 Index 7406

*18913998

SIRE: VAR Index 3282

DAM: BHR Marjorie 310 560, by VAR Discovery 2240

CED		Birth		Weaning		Yearling		SC		Milk	
EPD	ACC	EPD	ACC	EPD	ACC	EPD	ACC	EPD	ACC	EPD	ACC
+5	.39	+2.5	.58	+78	.42	+139	.38	+67	.39	+19	.31

CW		Marb		RE		FAT		Beef Value \$B	Combined Value \$C
EPD	ACC	EPD	ACC	EPD	ACC	EPD	ACC		
+67	.42	+78	.38	+1.08	.38	-.019	.35	+183	+271

Bred by Blue Hill Ranch, Leith, ND

Top 2% for RE, Top 3% for YW, CW, Top 4% WW, \$B

A growth and RE standout, produced by a Discovery daughter who goes back to the legendary Ideal cow family.

44 herd sire Index 3282's outcross calving ease genetics match up with popular bloodlines. His offspring have thickness and capacity.



VAR Index 3282 – Sire of Index 7406



44 Rubicon River 7110

+*19050930

SIRE: VAR Rubicon 5414

DAM: BoBo Evergreen Erica 2529, by Poss Total Impact 745

CED		Birth		Weaning		Yearling		SC		Milk	
EPD	ACC	EPD	ACC	EPD	ACC	EPD	ACC	EPD	ACC	EPD	ACC
+4	.41	+2.8	.62	+78	.44	+138	.38	+55	.49	+21	.30

CW		Marb		RE		FAT		Beef Value \$B	Combined Value \$C
EPD	ACC	EPD	ACC	EPD	ACC	EPD	ACC		
+63	.41	+76	.37	+89	.37	-.018	.35	+164	+270

Bred by Crazy K Ranch, LLC, Michie, TN

Top 4% for WW, YW, Top 5% CW

Unique pedigree, growth and performance from a great dam known for carcass traits.

Rubicon River's dam was the foundation Evergreen donor for Crazy K Ranch, now owned by Mann Cattle and Bar 7 Genetics LLC in Alabama.



His dam BoBo Evergreen Erica 2529



Woodside

*17862852

SIRE: Connealy Consensus 7229

DAM: Rita 5F56 of 1198 FD, by CA Future Direction 5321

CED		Birth		Weaning		Yearling		SC		Milk	
EPD	ACC	EPD	ACC	EPD	ACC	EPD	ACC	EPD	ACC	EPD	ACC
+4	.48	+1.8	.73	+51	.64	+94	.54	+44	.59	+21	.41

CW		Marb		RE		FAT		Beef Value \$B	Combined Value \$C
EPD	ACC	EPD	ACC	EPD	ACC	EPD	ACC		
+48	.50	+67	.45	+61	.45	+0.016	.44	+163	+260

Bred by Woodside Farms, Winchester, VA

Son of the great Rita 5F56, famous producer of herd sires. Works on a variety of females. Daughters are functional and productive.

Woodside has an important new assignment in "the real world." On loan to neighboring Diamond C Ranch, he's serving as principal herd sire for their Hereford female unit, siring replacement females and bulls that will be used on their 500-head commercial Angus unit.



Woodside is a maternal brother to Rito 9Q13 and Rito 9M25



His dam Rita 5F56 of 1198 FD



HOOVER *Entice* V125

*19496755

SIRE: MOGCK Entice

DAM: Bickp Empress Ellston S117, by Baldrige 38 Special

CED		Birth		Weaning		Yearling		SC		Milk	
EPD	ACC	EPD	ACC	EPD	ACC	EPD	ACC	EPD	ACC	EPD	ACC
+5	.36	+3.2	.52	+86	.45	+161	.40	+1.45	.46	+24	.24

CW		Marb		RE		FAT		Beef Value	Combined Value
EPD	ACC	EPD	ACC	EPD	ACC	EPD	ACC	\$B	\$C
+79	.37	+84	.33	+82	.34	+008	.31	+187	+295

Bred by Landi K McFarland, Hoover Angus, Ellston, Iowa

Top 1% for WW, YW, MW, CW, Top 2% \$F, \$B

Landi McFarland-Livingston on Hoover Entice V125:

"Nicely built, powerful bull, lots of body without sacrificing frame. He is a big-topped, big-hipped, meaty bull. Dam S117 was a first calf heifer and what an excellent job she did! She is a 6th generation daughter of the famed C57. No other cow family has the influence in this year's sale as this Blackcap Empress Ellston family. **Save all the daughters this guy makes! He should sire excellent females with good dispositions, excellent udders and pleasing phenotype."**



BW	Adj 205	WW Ratio	Adj YW	YW Ratio	Adj Scrotal	Adj IMF	IMF Ratio	Adj RE	RE Ratio	Adj RibFat	RibFat Ratio	Adj RumpFat	RumpFat Ratio
83	840	117	1429	115	37.86	3.52	95	15.9	114	.25	83	.34	103

the Best **BRAND NAMES**
in the business!

INTRODUCING OUR NEWEST HERD SIRES



POSS *Maverick* 948

*19513886

SIRE: Poss Maverick

DAM: Poss Blueblood 410, by Poss Easy Impact 0119

CED		Birth		Weaning		Yearling		SC		Milk	
EPD	ACC	EPD	ACC	EPD	ACC	EPD	ACC	EPD	ACC	EPD	ACC
-3	.30	+1.0	.47	+74	.41	+124	.36	+1.23	.38	+35	.26

CW		Marb		RE		FAT		Beef Value	Combined Value
EPD	ACC	EPD	ACC	EPD	ACC	EPD	ACC	\$B	\$C
+62	.38	+1.26	.34	+80	.34	+036	.31	+199	+313

Bred by Danny Poss, Poss Angus Ranch, Scotia, Nebraska

Top 1% for \$B, Top 2% for Marb, \$W, \$G, Top 3% \$F

Danny Poss on Poss Maverick 948:

"Clean look, long spine, big hip...a perfect footed bull. His dam is an absolute phenotypic standout who raised one of the high indexing bull calves this year. **Maverick 948 combines two of the most elite animals ever produced on our ranch to create what we feel is a masterpiece of a bull."**



BW	Adj 205	WW Ratio	Adj YW	YW Ratio	Adj Scrotal	Adj IMF	IMF Ratio	Adj RE	RE Ratio	Adj RibFat	RibFat Ratio	Adj RumpFat	RumpFat Ratio
70	849	125	1257	107	38.5	5.85	130	13.1	107	.3	125	.31	115



Ellston, Iowa
www.hooverangus.com
 Andrew & Landi McFarland-Livingston • Ty and Gwen
 David & Joy McFarland • John Kiburz

The Hoover family homesteaded in 1856 and nine decades ago, F.W. Hoover purchased his first Angus cows and began what is now one of the oldest Angus herds in the nation. All females bear "Ellston" in their name to signify the herd's home place, and cow families date back 18 generations of females bred, born, and raised at Hoover Angus. Angus cattle support three generations of the Hoover family and no family members have "off farm" jobs.

The cow herd numbers 300 registered spring calving cows and 100 registered fall calving cows. They sell 110 bulls and 75 females the first Tuesday in February. The Hoover family writes their own unique sale catalog and manages their own sale. The sale catalog is one of the most in-depth bull books published in the country.

It is Landi McFarland-Livingston's philosophy to have balanced cattle that excel in numerous areas such as: calving ease, growth, structure & phenotype, ribeye, udder quality and excellent docility. High docility is definitely a hallmark trait for Hoover Angus genetics. Data collection is a priority to make improvements to the herd and breed, and Hoover Angus has been one of the first herds in the breed to turn in significant amounts of temperament scores and foot scores on all yearling animals.



Scotia, Nebraska
www.possangus.com
 Danny & Kristi Poss
 Nolan, Nathan, Neleigh and Natalie Poss

Poss Angus is a family-owned Angus seedstock operation located on the east side of the North Loup River Valley. Managed similar to other commercial operations in central Nebraska, the operation consists of pasture, irrigated corn, alfalfa, soybeans and native hay meadows. Cows graze corn stalks in fall and winter, and are moved to calving pastures in February and March. Cows and heifers are AI'd at the end of April and early May, then taken to summer grass three miles east of ranch headquarters. The annual Poss Bull and Female Sale is held the first Friday in February, marketing over 200 bulls and females.

Poss Angus Mission • To produce superior Angus genetics based on economically important traits to ensure more profitability for our customers. • To produce fault free cattle with moderate birth weights, excellent performance and grid values, while paying strong attention to maternal traits, udder quality, fertility, fleshing ability, and disposition. • Develop cattle on a high roughage ration with plenty of exercise to ensure genetic predictability, longevity, and customer satisfaction. • Always raise the highest quality genetics from proven sires for the commercial cattleman and back them up with a great guarantee.

Poss Angus is committed to providing superior genetics to ensure calving ease, maternal strength, and profitability.

Big Branch Breeders Service



BRENT & TRACY COOPER

**ESTRUS SYNCHRONIZATION
 SEMEN SALES**

**REPRODUCTIVE PROGRAM LOGISTICS
 EDUCATION & CONSULTING**

Big Branch Breeders Service has the knowledge and experience to apply researched practices to cattle operations of every size. From synchronization to artificial insemination, we provide a complete cattle pregnancy package along with comprehensive reproductive program consulting services. As an Arkansas business and fellow cattle producer, we consider your success our personal goal!



Hackett, Arkansas • 501-316-3536
www.bigbranchbreeders.net

Congratulations, Brent and Tracy, on your recent acquisition of this long established, reputable business!

Your practical and up-to-date knowledge and teaching skills have been the GAME CHANGER in taking our AI and ET program forward.



AI Reference Sires

REFERENCED IN LOT ORDER FOR AI SERVICE & CALVES LISTED IN FOOTNOTES

We value the incredible power of the latest AI SIREs to increase the pace and scope of our genetic improvement.

As we move forward, we are committed to accessing and using the most progressive AI sires in the breed. The most desirable semen is not always easy to acquire, and it sure ain't cheap!

These and other AI Sires are impacting our breeding program, and you will profit from their influence!

EXAR MONUMENTAL 6056B

*18379347

SIRE: 3F Epic 4631

DAM: FWY 7008 of C085 4029, by AAR Ten X 7008 S A

CED		Birth		Weaning		Yearling		SC		Milk	
EPD	ACC	EPD	ACC	EPD	ACC	EPD	ACC	EPD	ACC	EPD	ACC
+10	.81	-2	.93	+70	.90	+128	.83	+1.07	.85	+26	.34

CW		Marb		RE		FAT		Beef Value \$B
EPD	ACC	EPD	ACC	EPD	ACC	EPD	ACC	
+60	.55	+1.27	.49	+62	.49	+0.37	.50	+179

BAR R JET BLACK 5063

*18389838

SIRE: Connealy Black Granite

DAM: Bar R Iris Anita 0113, by Sitz Upward 307R

CED		Birth		Weaning		Yearling		SC		Milk	
EPD	ACC	EPD	ACC	EPD	ACC	EPD	ACC	EPD	ACC	EPD	ACC
+9	.74	+1.2	.92	+78	.87	+139	.79	+1.23	.81	+23	.35

CW		Marb		RE		FAT		Beef Value \$B
EPD	ACC	EPD	ACC	EPD	ACC	EPD	ACC	
+67	.53	+52	.47	+80	.48	+0.05	.48	+183

WHITESTONE 18-MILLION

*18000000

SIRE: Jindra Acclaim

DAM: Whitestone Everelda 5109, by Connealy Black Granite

CED		Birth		Weaning		Yearling		SC		Milk	
EPD	ACC	EPD	ACC	EPD	ACC	EPD	ACC	EPD	ACC	EPD	ACC
+2	.45	+3.0	.74	+89	.58	+161	.46	+62	.53	+33	.30

CW		Marb		RE		FAT		Beef Value \$B
EPD	ACC	EPD	ACC	EPD	ACC	EPD	ACC	
+79	.43	+35	.37	+90	.38	-.056	.35	+211

POSS MAVERICK

*18962396

SIRE: Basin Payweight 1682

DAM: Poss Pride 5163, by Poss Hoover Dam 2509

CED		Birth		Weaning		Yearling		SC		Milk	
EPD	ACC	EPD	ACC	EPD	ACC	EPD	ACC	EPD	ACC	EPD	ACC
+1	.44	+1.5	.82	+70	.76	+128	.67	+1.53	.67	+38	.33

CW		Marb		RE		FAT		Beef Value \$B
EPD	ACC	EPD	ACC	EPD	ACC	EPD	ACC	
+71	.48	+1.47	.42	+69	.43	+0.10	.43	+222

BAKERS NORTHSIDE 6007

*18688213

SIRE: KCF Bennett Southside

DAM: Bakers Ericamere 3128, by Hoover Dam

CED		Birth		Weaning		Yearling		SC		Milk	
EPD	ACC	EPD	ACC	EPD	ACC	EPD	ACC	EPD	ACC	EPD	ACC
+10	.55	+4	.79	+77	.70	+142	.57	+1.94	.54	+32	.31

CW		Marb		RE		FAT		Beef Value \$B
EPD	ACC	EPD	ACC	EPD	ACC	EPD	ACC	
+80	.46	+90	.40	+88	.41	-.037	.39	+210

G A R ASHLAND

+*18217198

SIRE: G A R Early Bird

DAM: Chair Rock Ambush 1018, by B/R Ambush 28

CED		Birth		Weaning		Yearling		SC		Milk	
EPD	ACC	EPD	ACC	EPD	ACC	EPD	ACC	EPD	ACC	EPD	ACC
+15	.81	+1	.92	+75	.89	+138	.84	+94	.87	+24	.33

CW		Marb		RE		FAT		Beef Value \$B
EPD	ACC	EPD	ACC	EPD	ACC	EPD	ACC	
+63	.64	+1.29	.61	+1.06	.58	-.006	.61	+202

SYDGEN KCF GAVEL 8361

*19195196

SIRE: Baldridge Colonel C251

DAM: K C F Miss Fortress B398, by KCF Bennett Fortress

CED		Birth		Weaning		Yearling		SC		Milk	
EPD	ACC	EPD	ACC	EPD	ACC	EPD	ACC	EPD	ACC	EPD	ACC
+8	.37	+1.4	.55	+92	.48	+173	.44	+1.05	.50	+29	.30
CW		Marb		RE		FAT		Beef Value			
EPD	ACC	EPD	ACC	EPD	ACC	EPD	ACC	EPD	ACC	EPD	ACC
+83	.43	+93	.39	+86	.39	-.034	.37	+203			

E W A PEYTON 642

*18675107

SIRE: Quaker Hill Manning 4EX9

DAM: EWA 444 of 968 Progress

CED		Birth		Weaning		Yearling		SC		Milk	
EPD	ACC	EPD	ACC	EPD	ACC	EPD	ACC	EPD	ACC	EPD	ACC
+13	.51	+1.2	.82	+92	.72	+161	.60	+37	.39	+30	.29
CW		Marb		RE		FAT		Beef Value			
EPD	ACC	EPD	ACC	EPD	ACC	EPD	ACC	EPD	ACC	EPD	ACC
+82	.47	+1.28	.41	+76	.42	+.019	.40	+218			

HOOVER KNOW HOW

*18543644

SIRE: Hoover No Doubt

DAM: Blkcp Empress Ellston L265, by SydGen Storm 8504

CED		Birth		Weaning		Yearling		SC		Milk	
EPD	ACC	EPD	ACC	EPD	ACC	EPD	ACC	EPD	ACC	EPD	ACC
+2	.70	+2.9	.72	+63	.63	+132	.52	+2.02	.59	+22	.32
CW		Marb		RE		FAT		Beef Value			
EPD	ACC	EPD	ACC	EPD	ACC	EPD	ACC	EPD	ACC	EPD	ACC
+64	.43	+89	.37	+1.05	.38	+.002	.35	+209			

E&B PLUS ONE

*19196960

SIRE: Connealy Confidence Plus

DAM: E&B Lady 1023 Precision 936, by E&B 1680 Precision 1023

CED		Birth		Weaning		Yearling		SC		Milk	
EPD	ACC	EPD	ACC	EPD	ACC	EPD	ACC	EPD	ACC	EPD	ACC
+9	.34	+6	.55	+66	.48	+131	.45	+26	.50	+25	.34
CW		Marb		RE		FAT		Beef Value			
EPD	ACC	EPD	ACC	EPD	ACC	EPD	ACC	EPD	ACC	EPD	ACC
+56	.43	+95	.39	+92	.39	+.001	.37	+187			

MOGCK ENTICE

+*18952921

SIRE: SydGen Enhance

DAM: MOGCK Erica 2255, Mogck Sure Shot 253

CED		Birth		Weaning		Yearling		SC		Milk	
EPD	ACC	EPD	ACC	EPD	ACC	EPD	ACC	EPD	ACC	EPD	ACC
+4	.62	+2.7	.83	+81	.76	+143	.60	+2.28	.65	+26	.29
CW		Marb		RE		FAT		Beef Value			
EPD	ACC	EPD	ACC	EPD	ACC	EPD	ACC	EPD	ACC	EPD	ACC
+69	.46	+82	.40	+82	.43	-.012	.39	+188			

KB-FULL MEASURE C40

*18423726

SIRE: Plattermere Weigh Up K360

DAM: KB-Emma-Ten X-B02

CED		Birth		Weaning		Yearling		SC		Milk	
EPD	ACC	EPD	ACC	EPD	ACC	EPD	ACC	EPD	ACC	EPD	ACC
+15	.62	-.8	.86	+78	.81	+140	.59	-.05	.65	+33	.35
CW		Marb		RE		FAT		Beef Value			
EPD	ACC	EPD	ACC	EPD	ACC	EPD	ACC	EPD	ACC	EPD	ACC
+53	.50	+89	.44	+57	.44	-.055	.43	+189			

G A R QUANTUM

+*18636059

SIRE: G A R Momentum

DAM: G A R In Sure 1524, by Connealy In Sure 8524

CED		Birth		Weaning		Yearling		SC		Milk	
EPD	ACC	EPD	ACC	EPD	ACC	EPD	ACC	EPD	ACC	EPD	ACC
+11	.59	+1.6	.79	+72	.43	+128	.38	+1.79	.49	+38	.31
CW		Marb		RE		FAT		Beef Value			
EPD	ACC	EPD	ACC	EPD	ACC	EPD	ACC	EPD	ACC	EPD	ACC
+68	.43	+1.16	.40	+1.25	.39	-.010	.37	+204			

G A R INERTIA

*18636043

SIRE: G A R Momentum

DAM: G A R Prophet 2984, G A R Prophet

CED		Birth		Weaning		Yearling		SC		Milk	
EPD	ACC	EPD	ACC	EPD	ACC	EPD	ACC	EPD	ACC	EPD	ACC
+6	.56	+8	.83	+80	.57	+144	.37	+80	.39	+35	.30
CW		Marb		RE		FAT		Beef Value			
EPD	ACC	EPD	ACC	EPD	ACC	EPD	ACC	EPD	ACC	EPD	ACC
+63	.39	+1.38	.36	+91	.36	+.034	.32	+212			

EXAR GURU 8719B

+*19066319

SIRE: EXAR Monumental 6056B

DAM: EXAR Blackcap 9384, by EXAR Denver 2002B

CED		Birth		Weaning		Yearling		SC		Milk	
EPD	ACC	EPD	ACC	EPD	ACC	EPD	ACC	EPD	ACC	EPD	ACC
+8	.42	+2.2	.60	+81	.44	+138	.40	+.66	.50	+28	.29
CW		Marb		RE		FAT		Beef Value			
EPD	ACC	EPD	ACC	EPD	ACC	EPD	ACC	EPD	ACC	EPD	ACC
+69	.41	+1.30	.38	+73	.38	+.002	.35	+201			

DEER VALLEY GROWTH FUND

+*18827828

SIRE: Basin Payweight 1682

DAM: Deer Valley Rita 36113, by Plattermere Weigh Up K360

CED		Birth		Weaning		Yearling		SC		Milk	
EPD	ACC	EPD	ACC	EPD	ACC	EPD	ACC	EPD	ACC	EPD	ACC
+10	.54	+1.3	.85	+99	.75	+173	.51	+.59	.54	+29	.34
CW		Marb		RE		FAT		Beef Value			
EPD	ACC	EPD	ACC	EPD	ACC	EPD	ACC	EPD	ACC	EPD	ACC
+87	.49	+62	.43	+65	.43	+.045	.42	+184			

DIABLO DELUXE 1104

*18741751

SIRE: VAR Discovery 2240

DAM: Diablo Erica Dianna 9034, by GAR Prophet

CED		Birth		Weaning		Yearling		SC		Milk	
EPD	ACC	EPD	ACC	EPD	ACC	EPD	ACC	EPD	ACC	EPD	ACC
+9	.61	+1.0	.86	+86	.79	+155	.70	+1.62	.72	+24	.34
CW		Marb		RE		FAT		Beef Value			
EPD	ACC	EPD	ACC	EPD	ACC	EPD	ACC	EPD	ACC	EPD	ACC
+83	.51	+1.00	.45	+60	.46	-.003	.46	+191			





Larry Cotton
Ryan Cotton
Mike Gothard
Jerry Crenshaw
Zack Hileman

517-294-0777
706-206-8361
540-894-1055
703-244-4767
540-460-2776

Welcome Angus Friends,

The McMahon family extends a “special welcome” for all to attend the Belle Point Ranch Sale on March 28, 2020. Angus friends and breeders are always welcome at Belle Point Ranch for top Angus cattle, to have fun and enjoy great hospitality!

The history and tradition of Belle Point Ranch is well known and the annual Belle Point sale is one of the sale highlights in the Angus breed each year. The McMahon family has always been active in many activities and segments of the Angus business. Over the years, the McMahon family has participated and shown at local, state and national Angus shows, served as advisors and leaders to state Arkansas Jr. Angus Associations and through financial and leadership contributions, supported the American Angus Foundation. Most important, however; they are committed and prioritize making genetic and quality improvements in the Belle Point Angus herd.

David McMahon was a cattleman’s cattleman. David understood the importance of meeting the demands of commercial and registered breeders and instilled that priority to the family. His intention was to always provide a helping hand and advice to local and regional breeders. That priority continues to this day!

As you review the sale book, the offering has something for every breeder starting with female features of leading genetics, bred heifers, females with calves at side and bred females. Belle Point has always been identified by owning breed leading herd bulls, and the cattle represented in this year’s offering incorporate predictable genetics these herd sires and to AI sires.

The 2020 Belle Point Ranch sale offers outstanding opportunities for all breeders. Lot 1, EXAR Rita 8773, selling one half interest along with a January 15, 2020 heifer calf at side. A young, high marbling daughter of Basin Payweight 1682! Lot 3, Thomas Carol 6331, a full sister to the Thomas herd sire Thomas Big River, sells with a 9/7/19 heifer calf at side. Note too the special features Lot 7, IVF of the maternal sister to Mill Brae Identified, and Lot 8, half interest in the maternal sister to Musgrave 316 Stunner.

An innovative sale offering again this year: Sell One/Keep One, wherein breeders have the opportunity to share the best from the herd by selecting one of a pair of females, and Belle Point retains the other as a key herd building female. Review Lots 4 and 5 and Lots 9 through 16! Also review the offering from guest consignors: Fair Oaks Farm (FOF) Shirley & Fred Williams and Little Cedar Cattle Company (LCCC) Steve & Julie French.

We look forward to seeing you at the sale and if we can be of service in any way, please feel free to give us a call.

 Ryan Cotton  Mike Gothard  Jerry Crenshaw  Zack Hileman



*Watch the Sale
Live Online...*

CCI.LIVE

ONLINE BIDDING - Catalog - Videos - Sale Order - Plus More!

View the sale from your phone, tablet, or desktop computer and bid with confidence! Visit www.CCI.live for complete sale information and online registration. If this is your first time to CCI.live, visit the web page and get approved for bidding at least three hours prior to sale time. With good internet speeds you can enjoy the sale from any location and bid with confidence.

THE FOOTNOTES IN THIS CATALOG are mostly limited to reporting the calf at side and breeding information. That’s because Dave decided a long time ago to keep the “mumbo-jumbo” to a minimum to encourage you to do your own homework evaluating what’s important to YOU. (Suits us fine!)

We’re in the Angus market all the time, and here’s our suggestion:

- Decide how you define success, now and in the future.
- Consider pedigrees, numbers of all types, and rankings.
- Ask for the opinions of sale managers and other industry experts.
- Think...a lot. Listen to your own experience and set your priorities.
- Visualize what “good” looks like to you.
- Go look at ‘em, or ask a trusted person to report what they see.
- Determine value. (It’s not what something costs, but what it’s worth.)
- Stay focused on cattle that will do the job achieving YOUR GOALS!

So...what's **NEW** at Belle Point?

- Videos of Feature Lots will be posted on CCI.Live
- New Hotel Headquarters – Homewood Suites, 479-452-7100
7300 Phoenix Ave, Fort Smith, 72903
*Call the hotel directly to make a reservation,
OR visit our website to access a link for online reservation.*
- New Venue & Menu for our Friday Night Get-Together – Flip to page 13!
- New Trailer Parking on North Side of Hwy. 22 – See page 30. East of HQ, turn at sign.
- New Drive-Thru Load Out – See page 30. It's as close to "smaht pahk" as you can get!
- New Pens & Alleys on North Side – Improved routing for sorting, penning and working.
- Completed Working Facility on South Side – Show barn, sorting pens & chute.
- Continuing Land Stewardship Projects – Improvement of pastures and ponds.
Using shale and rocks from our own quarry,
corrected creek flow and graded for erosion
control to reclaim land at old steel pens
for better usage.

Make reservation
by March 13 to get
the BPR room rate!



When you see this note, you'll know we are offering to share
a female we've slated to be a Belle Point "herd builder."
One sells. One stays. You get to make the call.

We are committed

to accessing the most progressive
female lines in the Angus breed
to continually build and enhance
our cow herd with unique individuals
that are structurally correct,
functionally efficient,
dependably productive,
and prudently balanced
in the essential traits.

**We embrace performance data,
genetic evaluation and
genomic technology.**

**First and foremost, we believe
that cows and bulls have to be
ABLE do their most basic jobs.**

**That's why we never underestimate
the FUNCTIONAL TRAITS you can SEE.**

*For example, for many years we have quoted the
veteran AAA Regional Manager Waymon Ashley,
and what he said couldn't be more true today:*

*"Give me an EPD for shoulders, and then
let's start talkin' about calving ease!"*

**We believe you've still gotta
go LOOK at 'em to evaluate
the essential traits that
impact functional efficiency.**

**Sure, there are a lot of changes going on 'round here.
But one thing will always stay the same: we're here to help YOU be successful in the Angus breed.**



EXAR Rita 8773 – Lot 1

1 EXAR Rita 8773		Birth Date: 2-21-2018	Cow +*19086182	Tattoo: 8773
		#+*Basin Payweight 006S	#Vermilion Payweight J847	
Basin Payweight 1682		+Basin Lucy 3829	#HARB Pendleton 765 JH	
#+*17038724		21AR O Lass 7017	21AR O Lass F24A	
		+*GAR Sunrise	#MCC Daybreak	
GAR Sunrise 1482		+*GAR 5050 New Design T179	+*GAR Objective R227	
+*17353777			#+GAR New Design 5050	
			+GAR Predestined N685	

CED		BW		WW		YW		MILK	
+5		+1.9		+65		+112		+32	
CWT	MARB	RE	FAT	\$M	\$W	\$B	\$C		
+37	+1.37	+1.8	+0.26	+56	+76	+153	+254		

■ Offering half interest in all live calves and all ET production.

Rita 8773 is an outstanding high Marb. first calf heifer sired by the longtime foundation female sire in the ABS Global roster, Payweight 1682, produced by the \$180,000 valued Express Ranches and Vista Farms donor, Sunrise 1482.

Full and maternal siblings to this tremendous first calf heifer and lead-off female include: Rita 6840, the \$97,500 top-selling fall yearling of the 2017 Big Event selling to Deer Valley Farm; Sunrise 68736, the \$90,000 second high-selling bred heifer of the 2018 Big Event selected by Optum Angus; Rita 8713, the \$80,000 valued half interest selection of Cal Nash Ranch in the 2018 Big Event; the \$25,000 selection of Riverbend Ranch in the 2018 Bases Loaded Sale, and many more!

Share our progress...

Offering half interest in the 1682 daughter of Sunrise 1482



Basin Payweight 1682 – Sire of Lot 1



GAR Sunrise 1482 – Dam of Lot 1

1682

Calving Ease

Extreme Body Mass & Depth

Elite Growth Values

Daughters display:

Depth of Body

Easy Fleshing

Nice Udder Structure

Brood Cow Look

1482

Power with Eye Appeal

Added Carcass Genetics

Elite Percentile Rankings

Top 1% – Marb, Fat, \$G

Top 2% – \$B, Docility

1A Belle Rita A250

1A Belle Rita A250		Birth Date: 1-15-2020	Cow 19667459	Tattoo: A250
		3F Epic 4631	*Varilek Product 2010 04	
EXAR Monumental 6056B		*18379347	*FWY 7008 of C085 4029	
			#*AAR Ten X 7008 SA	
			+*FWY Rita C085	
		+*Basin Payweight 1682	#+*Basin Payweight 006S	
EXAR Rita 8773		+*GAR Sunrise 1482	21AR O Lass 7017	
+*19086182			+*GAR Sunrise	
			+*GAR 5050 New Design T179	

CED		BW		WW		YW		MILK	
I+8		I+9		I+68		I+120		I+29	
CWT	MARB	RE	FAT	\$M	\$W	\$B	\$C		
I+48	I+1.32	I+.39	I+.031	+44	+75	+165	+258		

■ Half interest in her January '20 heifer calf is included with Lot 1!
Genomic EPDs are in progress and will be available sale day.



EXAR Monumental 6056B – Sire of Lot 1A



44 Ruby 73030 – Lot 2

the Best **BRAND NAMES**
in the business!

*Serious
Power
Cows*



Thomas Carol 6331 – Lot 3

2 44 Ruby 73030

Birth Date: 3-28-2017 Cow #*18793601 Tattoo: 73030

44 Bragging Rights 4372 #*VAR Discovery 2240
+*17894794 +*44 Ruby 2357 #*AAR Ten X 7008 SA
+*44 Ruby X110 +*Deer Valley Rita 0308
+*Connealy Capitalist 028



44 Ruby 3032 #*EF Authentic 0829
+*17429499 +*44 Ruby 546X #*GAR New Design 5050
2 Bar Objective 7836
B/R Ruby 1224 #*Werner War Party 2417

CED		BW		WW		YW		MILK	
+7		+2.0		+71		+126		+32	
CWT	MARB	RE	FAT	\$M	\$W	\$B	\$C		
+60	+94	+99	+021	+85	+84	+170	+305		

■ 2A, J239, Heifer, 19590084, 10/17/19, sired by 44 Strike Force 6003.
Ultrasounded on 2-10-2020, 30 days safe to Poss Maverick,
due 10-20-2020.

Safe to Maverick

Lot 2
One of the top combination females to ever be offered by Belle Point,
Ruby 73030 blends the \$100,000 calving-ease and carcass sire
44 Bragging Rights 4372 with the foundation member of the
Callaway RE producing Ruby family, Ruby 3032.

Her dam served as a third-generation donor in the 44 Farms program.

Lot 3
Stemming from one of the top producing families ever developed
in the Thomas Angus Ranch performance program, Carol 6331 blends
the proven female sire, Ten X, with a direct daughter of the
herd sire producer, RE sire, Summitcrest Complete.

Carol 6331 is a full sister-in-blood to the popular and proven Thomas
Angus Ranch, Stevenson Angus and TC Ranch sire, Big River 4081.

3 Thomas Carol 6331

Birth Date: 2-17-2016 Cow #*18461636 Tattoo: 6331

AAR Ten X 7008 SA #*Mytty In Focus #SAF Focus of ER
#*15719841 #AAR Lady Kelton 5551 Mytty Countess 906
SAV Adaptor 2213
+HSAF Lady Kelton 504B



Thomas Carol 2073 #*Summitcrest Complete 1P55 #CF Right Design 1802
+*17232699 +Thomas Carol 7595 Summitcrest Elba 1M17
#*Rito 112 of 2536 Rito 616
Thomas Carol 1246

CED		BW		WW		YW		MILK	
+13		+8		+65		+116		+34	
CWT	MARB	RE	FAT	\$M	\$W	\$B	\$C		
+46	+85	+85	-.001	+71	+83	+156	+273		

■ 3A, I109, Heifer, 19597856, 9/7/19, sired by Whitestone 18-Million
Ultrasounded on 2-10-2020, 60 days safe to Bar R Jet Black 5063,
due 9-18-2020.

Safe to Jet Black



44 Bragging Rights 4372 – Sire of Lot 2



Poss Maverick – AI Service Sire of Lot 2




Thomas Big River 4081 – Full brother in blood to Lot 3



Bar R Jet Black 5063 – AI Service Sire of Lot 3



DCF Chloe 6104 – Lot 4, maternal sister to DCF Chloe 5769 (pictured page 13)

4	DCF Chloe 6104		
	Birth Date: 12-31-2016	Cow +*18845716	Tattoo: 6104
	#*AAR Ten X 7008 SA	#*Mytty In Focus	
EXAR Stud 4658B		#AAR Lady Kelton 5551	
+*17908266	+*BoBo Rita 1559	#*Summitcrest Complete 1P55	
		+DRMCTR 111 Rita 6108	
			
	#*Connealy Consensus 7229	#*Connealy Consensus	
EXAR Chloe 2385		Blue Lilly of Conanga 16	
17327756	EXAR Chloe 0601	#EXAR 263C	
		+EXAR Chloe 2157	

CED		BW	WW	YW	MILK	
+12		+7	+58	+110	+31	
CWT	MARB	RE	FAT	\$M	\$B	\$C
+46	+80	+45	+032	+63	+150	+258

■ 4A, B390, Bull, 19674816, 2/21/20, sired by 44 Index 7406


Choice of the Chloe 3/4 Sisters

*Sell One
Keep One*

Belle Point retains flush rights for the chosen female to obtain a minimum of 6 embryos.



DCF Chloe 5772 – Lot 5, full sister to DCF Chloe 5769 (pictured page 13)

5	DCF Chloe 5772		
	Birth Date: 9-15-2015	Cow +*18484965	Tattoo: 5772
	*#AAR Ten X 7008 SA	#*Mytty In Focus	
VAR Discovery 2240		#AAR Lady Kelton 5551	
#*17262835	+*Deer Valley Rita 0308	#Sitz Upward 307R	
		*GAR Objective 2345	
			
	#*Connealy Consensus 7229	#*Connealy Consensus	
EXAR Chloe 2385		Blue Lilly of Conanga 16	
17327756	EXAR Chloe 0601	#EXAR 263C	
		+Exar Chloe 2157	

CED		BW		WW		YW		MILK	
+8		+3		+61		+109		+24	
CWT	MARB	RE	FAT	\$M	\$W	\$B	\$C		
+42	+83	+47	+027	+73	+68	+148	+265		

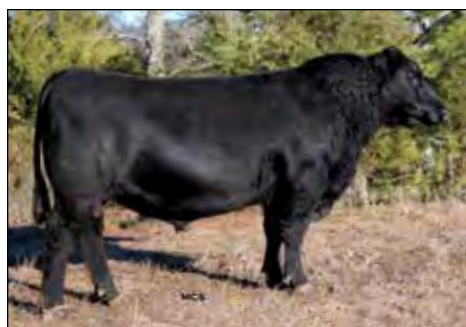
■ 5A, I29, Heifer, 19590045, 9/4/19, sired by EXAR Monumental 6056B
Ultrasounded on 2-10-2020, 30 days safe to 44 Index 7406, due 10-20-2020.

Offering buyer's choice of the Chloe 3/4 Sisters – two tremendous young females produced by the foundation Double Creek Farms donor, Chloe 2385. Lot 4 is sired by the low-birth and Marb. sire, EXAR Stud. Lot 5 is a daughter of the \$110,000 foundation 44 Farms and Vintage Angus Ranch sire, Discovery.

The dam of these two power cows blends the cornerstone female sire in the Express Ranches herd sire roster, Consensus, with a proven and productive daughter of the calving-ease female sire, 263C.



EXAR Stud 4658B – Sire of Lot 4



44 Index 7406 – Sire of Lot 4A and Service Sire of Lot 5



EXAR Monumental 6056B – Sire of Lot 5A



VAR Discovery 2240 – Sire of Lot 5 and 5769



DCF Chloe 5769 – \$60,000 donor for Vintage and Lylester
Full sister to 5772 (Lot 5) and 5768 (Dam of Lot 6)

**Lot 5 and the dam of Lot 6 are
full sisters to DCF Chloe 5769,
donor for Vintage Angus
Ranch and Lylester Ranch!**



Vintage Chloe 9071 – Daughter of DCF Chloe 5769
Sold to Spruce Mountain Ranch for \$65,000

**The DCF Chloe family descends
from the original Basin Chloe 812L
that sold to 44 Farms for \$125,000
half interest as an aged cow.**

6 F O F Chloe 8071

Birth Date: 9-3-2018 Cow *19442257 Tattoo: 8071

Baldrige Colonel C251 +18493773

+baldrige Xpand x743

*Baldrige Isabel Y69

#*Hoover Dam

Baldrige Queen S87

#*Styles Upgrade J59

+Baldrige Isabel T935



#*VAR Discovery 2240

#*AAR Ten X 7008 SA

+*Deer Valley Rita 0308

#*Connealy Consensus 7229

EXAR Chloe 0601

DCF Chloe 5768
+*18484959

EXAR Chloe 2385

CED		BW	WW	YW	MILK		
+7		+6	+63	+107	+26		
CWT	MARB	RE	FAT	SM	SW	SB	SC
+47	+66	+69	-019	+82	+73	+138	+261

■ Offered by Fair Oaks Farm, Van Buren, AR
AI bred on 12-2-2019 to Bakers Northside 6007, ultrasounded safe.
Due 9-10-2020.



Bakers Northside 6007 – AI Service Sire of Lot 6

**Lot 6 is the low-birth and balanced-trait natural daughter of the deceased Chloe 5768.
Chloe 8071 is sired by the \$580,000 record-selling Baldrige Brothers sire selected
by Spruce Mountain Ranch and Dixie Valley, Colonel C251.**

**Full sisters to the dam of Chloe 8071 include the female offered as Lot 5, and Chloe 5769,
the \$60,000 donor in the elite breeding programs of Vintage Angus Ranch and Lylester Ranch.**

Join us Friday night!

**THE
BAKERY
DISTRICT**

70 South 7th Street

**6:30 to 10:30 pm
Downtown
Historic
Fort Smith**

New Venue!

From 1921 to 1996, this building was the site of the mass production of bread, rolls, cakes and pies made by Shipley Baking Company.

"The Bakery District" now provides a unique venue for social events in the West End of downtown. Its original brick and mortar walls have been retrofitted with updated sound, lighting, and air conditioning systems. The interior has been redesigned as an event space, along with a beer garden and a bocce ball court for outdoor fun.



**21
WEST
END**

New Menu!

Chef Paul Capel is known for his fusion of classic traditional recipes with modern creativity. The menu he's planned is perfect for the mixing 'n mingling 'n tasting we all like to do!

Featuring 44 Short Ribs

Plus...Creekstone Farms tenderloin tips, shrimp skewers, and chipotle chicken paired with our specialty beers and delectable "small plate" sides and appetizers.

**It's a FUN, RELAXED EVENT with a buffet of good food
and sampling our new brands of cold golden refreshments.**

**The BIG SCREEN will keep you in the ACTION
of "March Madness" NCAA Basketball!**

Come anytime, dress casually. Kids are certainly welcome.

**Parking is nearby, and complimentary SHUTTLE SERVICE is provided
from our NEW HOTEL HEADQUARTERS Homewood Suites!**



Mill Brae CP Blackcap 8282 – Lot 7 Donor

Offering an IVF Flush from the Maternal Sister to Identified



Mill Brae Identified 4031 – Maternal brother to Lot 7 Donor

Confidence Plus Daughter

Mill Brae Ranch on Identified 4031: *"Identified is a power bull for calving ease, carcass merit, heifer pregnancy, scale-smashing pounds, and superior phenotype. Big, strong, and easy to admire in terms of profile, shape, and muscle. His dam is an exceptional donor with a near perfect udder. Good cowboys searched through lots of bulls to find this bull. **Semen is extremely limited.**"*

7 Mill Brae CP Blackcap 8282

Birth Date: 2-17-2018 Cow *19238038 Tattoo: 8282

#*Connealy Confidence 0100
Connealy Confidence Plus
*17585576
Elbanna of Conanga 1209

Connealy Tobin
Becka Gala of Conanga 8281
#*Connealy Consensus
Elbasta of Conanga 9703

ANGUS

#+*GAR-EGL Protege
Mill Brae Pro Blackcap 1092
*17029763 Mill Brae FL Blackcap 5002

#+*Rito 112 of 2536 Rito 616
LB 6807 Isabel 339
#Connealy Freightliner
#Mill Brae SA Blackcap 3025

CED		BW		WW		YW		MILK	
+9		+0		+69		+122		+35	
CWT	MARB	RE	FAT	SM	SW	SB	SC		
+54	+ 62	+ 95	+ 029	+93	+90	+154	+293		

■ Available for IVF in late April, 2020. (Note to McMahon family: Industry standard "deal" on flushes is PDG...but WWDD? Blue light maybe?)

Presenting the opportunity to acquire an IVF flush, sired by the bull of the buyer's choice, from one of the newest additions to the Belle Point program. Blackcap 8282 is a tremendous calving-ease female sired by the very popular Confidence Plus.



Connealy Confidence Plus – Sire of Lot 7 Donor



Mill Brae Pro Blackcap 1092 – Dam of Lot 7 Donor

Blackcap 8282's dam blends the Circle A Sire Alliance record-setter, Protégé with a direct daughter of the Pathfinder Dam, Blackcap 3025 who is by the SC sire, Connealy Freightliner. She stems from one of the top producing families ever to work in the Mill Brae Ranch performance program.



Ingram Blackbird 9017 – Lot 8

Offering half interest in the Maternal Sister to Stunner



Musgrave 316 Stunner – Maternal brother to Lot 8

8

Ingram Blackbird 9017

Birth Date: 1-16-2019 Cow +*19384759 Tattoo: 9017

Casino Bomber N33
*18658677

#*KM Broken Bow 002

#*Casino Annie K48



MCATL Blackbird 831-1378
#16896985

#MCATL Pure Product 903-55

MCATL Blackbird 1378-573

#*Summitcrest Complete 1P55

#Summitcrest Princess 0P12

DPL Upward L70

Casino Annie G64

#*Connealy Final Product

MA Esta 55-252

#Connealy Reflection

MA Blackbird 573

CED		BW	WW	YW	MILK		
+7		+1.5	+75	+127	+30		
CWT	MARB	RE	FAT	\$M	\$W	\$B	\$C
+64	+.57	+.38	+.017	+51	+82	+154	+251

■ Offering half interest in all live calves and all ET production.
Sells open.

Offering half interest in this sensational maternal sister to the popular \$83,000 Musgrave Angus, TK Angus, and Genex sire, 316 Stunner.

She's a daughter of the Vermilion Angus Ranch sire, Bomber N33.

Genex on Musgrave 316 Stunner:

Stunning!

"Stunner is one of the most exciting bulls in the lineup. He's producing calves with muscle shape, depth of body and great growth, all coming in a calving-ease package.

Ranking in the top tier for most maternal traits and backed by a cow with a tremendous udder and outstanding production record, look to Stunner to produce long-lasting females.

Cattlemen are looking to Stunner for his ability to infuse his well-balanced EPD set into a powerful, attractive phenotypic package."



MCATL Blackbird 831-1378 – Dam of Lot 8

In the 2018 Musgrave Angus Sale, she sold for \$66,000 with a full sister to Stunner at side



Blackcap Empress Ellston V27 – Lot 9

9 Blackcap Empress Ellston V27

Birth Date: 1-11-2019 Cow 19497693 Tattoo: V27

SydGen Enhance
MOGCK Entice *18952921
#*MOGCK Erica 2255

*SydGen Exceed 3223
SydGen Rita 2618
Mogck Sure Shot 253
MOGCK Erica 2162

ANGUS

*Bruns Top Cut 373
Blkcp Empress Ellston P282
18209226

*Bruns UpperCut 610
#Dakota Miss 669 Baf
#TC Gridiron 258
Blkcp Empress Ellston A306

CED		BW	WW	YW	MILK		
+6		+2.6	+65	+113	+30		
CWT	MARB	RE	FAT	\$M	\$W	\$B	\$C
+58	+48	+84	+0	+57	+71	+149	+250

■ Sells open.

Two sensational balanced-trait Entice daughters from the steadfast Empress Ellston and Mary of Ellston families of the Hoover performance program – your opportunity to get in EARLY on a hot new sire!

the Best **BRAND NAMES**
in the business!

Take your pick of
MOGCK ENTICE
daughters bred by
HOOVER
Angus

*Sell One
Keep One*

*Belle Point retains flush rights for
the chosen female to obtain
a minimum of 6 embryos.*



MOGCK Entice – Sire of Lots 9 and 10



Blkcp Mary of Ellston V136 – Lot 10

10 Blkcp Mary of Ellston V136

Birth Date: 2-14-2019 Cow *19497735 Tattoo: V136

SydGen Enhance
MOGCK Entice *18952921
#*MOGCK Erica 2255

*SydGen Exceed 3223
SydGen Rita 2618
Mogck Sure Shot 253
MOGCK Erica 2162

ANGUS

+*Baldridge 38 Special
Blkcp Mary of Ellston S110
18873786

*EF Commando 1366
*Baldridge Isabel Y69
#*Connealy Counselor
#Blackcap Mary of Ellston J20

CED		BW	WW	YW	MILK		
+4		+1.6	+75	+128	+27		
CWT	MARB	RE	FAT	SM	SW	SB	SC
+49	+71	+86	+002	+67	+82	+140	+249

■ Sells open.

Hoover Angus on MOGCK Entice:

“Boasting a +326 \$C, Entice not only nails it on paper, but also stamps his high growth progeny with thickness, style, and a commanding presence! His outcross pedigree makes him a very a “fresh” find for the breed.

Entice offers a correct skeleton and exceptional phenotypic presence in a mid-6 frame. He is wide-based, super long, big-ribbed, square-hipped, tight-sheathed, and has abundant thickness. He has a very nice disposition, which is validated by his score of 1 on the 50K test for Docility. Entice exhibits superior foot shape.”



Belle Blackcap B19 – Lot 11

We got in early on a
HOOVER KNOW HOW
semen package.
Here's an **OPPORTUNITY**
to join us on a path we
"know" is right!



*Belle Point retains flush rights for
the chosen female to obtain
a minimum of 6 embryos.*



Belle Rita B369 – Lot 12

11 Belle Blackcap B19

Birth Date: 2-1-2019 Cow *19501233 Tattoo: B19

Hoover Know How
*18543644
#Blkcp Empress Ellston L265
#Mogck Bullseye
*Miss Blackcap Ellston J2
+SydGen Storm 8504
Blkcp Empress Ellston J120

ANGUSGS

DCF Blackcap 6769
*18628675
#*AAR Ten X 7008 SA
#Mytty In Focus
#AAR Lady Kelton 5551
*+*VAR Reserve 1111
*Crazy K Blackcap 2327

CED		BW	WW	YW	MILK		
+7		+2.1	+69	+149	+26		
CWT	MARB	RE	FAT	SM	SW	SB	SC
+65	+1.02	+70	+0	+43	+56	+197	+299

■ Sells open.

Two tremendous Marb. and \$B daughters of the featured No Doubt son in the Select Sires roster and Teixeira and Hoover programs, Hoover Know How.

the Best **BRAND NAMES**
in the business!



Hoover Know How – Sire of Lots 11 and 12

12 Belle Rita B369

Birth Date: 2-28-2019 Cow *19501241 Tattoo: B369

Hoover Know How
*18543644
#Blkcp Empress Ellston L265
#Mogck Bullseye
*Miss Blackcap Ellston J2
+SydGen Storm 8504
Blkcp Empress Ellston J120

ANGUSGS

Burns Rita 7123
18768650
#*VAR Discovery 2240
#*AAR Ten X 7008 SA
+*Deer Valley Rita 0308
#*B/R New Day 454
+Blackstone Rita 9023

CED		BW	WW	YW	MILK		
+1		+3.6	+77	+142	+25		
CWT	MARB	RE	FAT	\$M	\$W	\$B	\$C
+72	+88	+83	-008	+50	+66	+190	+296

■ Sells open.

Hoover Angus on Hoover Know How:

"Know How is a super stout, thick, moderate-sized, great-footed, big testicled bull with an excellent disposition that has the look of his father, No Doubt.

From one of the longest standing, most successful cow families in the 91-year history of Hoover Angus, this bull brings a special pedigree to the breed.

His Pathfinder dam, L265, is an exceptionally uddered female and very calm in her demeanor. She is an 11th generation Blackcap Empress Ellston, a tremendously successful cow family through many generations."



Woodside Rita 6Q3 of 2143 – Lot 13

13 Woodside Rita 6Q3 of 2143

Birth Date: 3-1-2016 Cow +*18746338 Tattoo: 6Q3

#Gardens Highmark
Rito 9Q20 of Rita 5F56 GHM
+*16408445 +*Rita 5F56 of 1198 FD

#Summitcrest Scotch Cap 0B45
Green Garden Pride 6128 S1
#CA Future Direction 5321
+*Rita 1198 of 2536 Rito 616



#+GAR Ingenuity
FF Rita 2143 of 5M46 Ingen
+*17423156 +*Rita 5M46 of 2536 PRED

#+GAR New Design 5050
GAR Objective 1067
#*GAR Predestined
GAR Precision 2536

CED		BW		WW		YW		MILK	
+10		+1.6		+71		+126		+27	
CWT	MARB	RE	FAT	\$M	\$W	\$B	\$C		
+56	+95	+71	-014	+45	+72	+178	+276		

■ 13A, K109, Heifer, 19597938, 11/11/19, sired by G A R Ashland.
Pasture exposed to 44 Index 7406 up to sale day. See update!

Daughter at side by Ashland



GAR Ashland – Sire of Lot 13A

CHOICE OF DAM OR DAUGHTER

*Sell One
Keep One*

*Belle Point retains flush rights for
the chosen female to obtain
a minimum of 6 embryos.*

Lot 13

An outstanding female in her prime
who descends directly from the esteemed
\$8.5 million producer, Precision 2536.

Lot 14

The ONLY reason we are offering K188 is to
SHOW what our herd sire 44 Strike Force can do.
Wowza, whatarita!



Belle Rita K188 – Lot 14

14 Belle Rita K188

Birth Date: 11-18-2018 Cow 19501218 Tattoo: K188

44 Strike Force 6003
+*18550953 +*Rito 3S10 of 9Q15 Progress
+J/R Queen of New Design 356H

#*GAR Progress
+*Rita 9Q15 of Rita 5F56 GHM
#*Summitcrest Complete 1P55
Goode Predestined 620

+*Rito 9Q20 of Rita 5F56 GHM
Woodside Rita 6Q3 of 2143
+*18746338 +*FF Rita 2143 of 5M46 Ingen

#Gardens Highmark
+*Rita 5F56 of 1198 FD
#*GAR Ingenuity
+*Rita 5M46 of 2536 PRED

CED		BW		WW		YW		MILK	
+10		+2.3		+66		+118		+31	
CWT	MARB	RE	FAT	\$M	\$W	\$B	\$C		
+55	+1.00	+86	+003	+47	+70	+179	+279		

■ Sells open. Genomic EPDs are in progress and will be available sale day.

Daughter of Strike Force



44 Strike Force 6003 – Sire of Lot 14



Woodside Erica C156-E18 – Lot 15

15 Woodhill Erica C156-E18

Birth Date: 2-4-2017 Cow *18877518 Tattoo: E18

GAR Sure Fire
+*17328461
#*Connealy In Sure 8524
+Chair Rock 5050 GAR 8086
#*Mytty In Focus
Entreena of Conanga 657
#+GAR New Design 5050
Chair Rock Grid Maker 2107

ANGUS

Woodhill Robust Y3-A15
#*Hoover Dam
Woodhill Erica A52-C156
#Woodhill Lady W19-Y3
*18246451
Woodhill Erica X34-A52
#*Connealy Impression
Woodhill Erica T306-X34

CED		BW		WW		YW		MILK	
+20		-4.0		+56		+97		+42	
CWT	MARB	RE	FAT	\$M	\$W	\$B	\$C		
+43	+1.23	+80	+0.19	+71	+84	+160	+279		

■ 15A, A60, Bull, 19672780, 1/6/20, sired by EXAR Monumental 6056B

When we selected females at Woodhill in Fall 2018, Erica E18 was not, shall we say, "available." We had to do some "trading" to get her on the truck. (WWDD?) Sure Fire sure worked his carcass and maternal magic. Monumental's power in her January bull calf proves Woodhill females are time-tested for VERSATILITY!



GAR Sure Fire – Sire of Lot 15



EXAR Monumental 6056B – Sire of Lot 15A

CHOICE OF
DAM OR
DAUGHTER

*Sell One
Keep One*

*Belle Point retains flush rights for
the chosen female to obtain
a minimum of 6 embryos.*



Belle Erica B29 – Lot 16

16 Belle Erica B29

Birth Date: 2-1-2019 Cow *19501234 Tattoo: B29

Woodhill Blueprint
*18876777
*Connealy Confidence Plus
*Woodhill Evergreen Z291-B233
#*Connealy Confidence 0100
Elbanna of Conanga 1209
*Tehama Sierra Cut Z118
+*Woodhill Evergreen U6-Z291

ANGUS

+*GAR Sure Fire
Woodhill Erica C156-E18
*18877518
#*Connealy In Sure 8524
+Chair Rock 5050 GAR 8086
Woodhill Robust Y3-A15
Woodhill Erica X34-A52

CED		BW		WW		YW		MILK	
+15		-5		+70		+125		+27	
CWT	MARB	RE	FAT	\$M	\$W	\$B	\$C		
+54	+1.03	+1.00	-.010	+67	+79	+172	+290		

■ Sells open.

This Blueprint daughter was in dam at Woodhill in Fall 2018 – definitely on our radar screen in the trading game. Blueprint is balanced in every way that counts in this game, and he looks good doin' it! Evergreen x Erica, with a healthy dose of Confidence Plus and Sure Fire. Brilliant, Brian.



Woodhill Blueprint – Sire of Lot 16

the **Best** BRAND NAMES in the business!

The DAMS of these fall heifer calves represent the most **PROGRESSIVE FEMALE LINES** in the breed. They were selected from leading Angus operations to **build our cow herd.**

The **SIRE**s are **CURRENT** and on trend, contributing **style** and **PERFORMANCE** in equal measure.

We're offering these heifers to give a **glimpse of the future** of our breeding program and to **SHARE OUR PROGRESS.**

Dave liked to call it...

Share the Fun!



Pollard Blackbird 9516 – Lot 17

17 Pollard Blackbird 9516		
Birth Date: 8-16-2019	Cow 19511951	Tattoo: 9516
Casino Bomber N33 *18658677	#*KM Broken Bow 002 #*Casino Annie K48	#*Summitcrest Complete 1P55 #Summitcrest Princess 0P12 DPL Upward L70 Casino Annie G64
Pollard Blackbird 7567 +*18974128	#*VAR Discovery 2240 +*Vintage Blackbird 4202	#*AAR Ten X 7008 SA +*Deer Valley Rita 0308 #*Connealy Consensus 7229 +*Sandpoint Blackbird 8809

CED		BW		WW		YW		MILK	
+8		+1.2		+79		+135		+26	
CWT	MARB	RE	FAT	\$M	\$W	\$B	\$C		
1±57	1± 79	1± 83	1- 024	±68	±81	±166	±283		

■ Sells open. Genomic EPDs are in progress and will be available sale day.

Blackbird 9516 blends the \$190,000 Bomber N33 and the 44 Farms & Vintage Angus sire, Discovery. Her granddam was the \$45,000 selection of Riverbend Ranch at Pollard 2019.



Vintage Blackbird 4202 – Granddam of Lot 17



Vintage Blackcap 9524 – Lot 18

18 Vintage Blackcap 9524		
Birth Date: 8-26-2019	Cow *19518537	Tattoo: 9524
VAR Signal 7244 +*18748511	#*Basin Payweight 1682 +*PF CC&7 Henrietta Pride 1044	#*Basin Payweight 006S 21AR O Lass 7017 #*SydGen CC&7 +Sitz Henrietta Pride 643T
Vintage Blackcap 5424 +*18212177	+*Quaker Hill Rampage 0A36 +*EXAR Blackcap 2079	#MCC Daybreak +*QHF Blackcap 6E2 of4V16 4355 #Sitz Upward 307R Exar Blackcap 2407

CED		BW		WW		YW		MILK	
+10		+1.9		+75		+129		+17	
CWT	MARB	RE	FAT	\$M	\$W	\$B	\$C		
+68	+38	+78	-.026	+62	+66	+158	+267		

■ Sells open.

An outstanding daughter of the \$105,000 Wall Street Cattle Company and Vintage Angus sire, Signal 7244.



VAR Signal 7244 – Sire of Lot 18



EZAR Duchess 9417 – Lot 19



EZAR Lucy 9400 – Lot 20



Silveiras Saras Dream 9434 – Lot 21

19 EZAR Duchess 9417

Birth Date: 9-7-2019 Cow *19528601 Tattoo: 9417

*SydGen Exceed 3223 +*SydGen Googol
 EZAR Exceed 7458 +*SydGen Forever Lady 1255
 19014813 R/M Treasure 1F14 #*SAV Brilliance 8077
 #*Basin Payweight 1682 #*Basin Payweight 006S
 EZAR Duchess 7468 21AR O Lass 7017
 *18974095 *EZAR Duchess 5074 *VAR Generation 2100
 SydGen Duchess 1122

CED		BW		WW		YW		MILK	
+14		-2.7		+51		+96		+22	
CWT	MARB	RE	FAT	\$M	\$W	\$B	\$C		
+42	+69	+66	-0.07	+46	+53	+148	+238		

■ Sells open.

A balanced-trait female from the top producing Sydenstricker Genetics Duchess family.



EZAR Duchess 7468 – Dam of Lot 19

20 EZAR Lucy 9400

Birth Date: 7-30-2019 Cow *19528593 Tattoo: 9400

3F Epic 4631 *Varilek Product 2010 04
 EXAR Monumental 6056B Zebo Queen 1072
 *18379347 *FWY 7008 of C085 4029 #*AAR Ten X 7008 SA
 #*Basin Paycheck 5249 #*Basin Payweight 1682
 EZAR Lucy 7455 *Basin Lucy 3150
 +*18974251 +*R/M Basin Lucy 2649 #*AAR Ten X 7008 SA
 +Basin Lucy 3829

CED		BW		WW		YW		MILK					
+13		-2.2		+56		+93		+35					
CWT	MARB	RE		FAT		\$M		\$B		\$C			
+40	+1.46	+41		+.055		+57		+80		+156		+259	

■ Sells open.

Calving-ease and Marb. female from the famous Basin Lucy family.



EZAR Lucy 7455 – Dam of Lot 20

21 Silveiras Saras Dream 9434

Birth Date: 9-24-2019 Cow 19551831 Tattoo: 9434

*44/Blackstone Peak Value #*Rito 9013 of Rita 5F56 GHM
 SAC Peak Value BN45 +*GAR 5050 New Design 0545
 *18483034 *Silveiras Elba 4057 Silveiras 5076 Total 7456
 Silveiras Elba 0021

*SydGen Exceed 3223 +*SydGen Googol
 Silveiras Saras Dream 7407 +*SydGen Forever Lady 1255
 *19125197 +*DCC Saras Dream C08 #*PVF Insight 0129
 +*Silveiras Saras Dream 2335

CED		BW		WW		YW		MILK	
I+3		I+2.8		I+62		I+116		I+30	
CWT	MARB	RE	FAT	\$M	\$W	\$B	\$C		
I+58	I+.49	I+1.19	I-.055	+41	+64	+191	+289		

■ Sells open. Genomic EPDs are in progress and will be available sale day.

RE and \$B female from the Silveira Brothers show heifer producing Saras Dream family.



Silveiras Saras Dream 2335 – Great Granddam of Lot 21



Marands Royal Lady 1037 – 2003 NJAS Grand Champion

A daughter of the proven RE sire in the Genex roster, this fancy heifer directly stems from the same Marands Royal Ladies that produced the 2003 NJAS Grand Champion for Emily McCurry!

22 Belle Royal Lady 9100

Birth Date: 9-19-2019 Cow +19661641 Tattoo: 9100
 SAV Resource 1441 +Rito 707 of Ideal 3407 7075 #RR Rito 707
 #+*17016597 *SAV Blackcap May 4136 Ideal 3407 of 1418 076
 #SAV 8180 Traveler 004
 #+SAV May 2397
 #Leachman Saugahatchee 3000C #*N Bar Emulation EXT
 Marands Royal Lady 4091 Leachman BC 7100
 14974044 Marands Royal Lady 9768 Marands Scotch Cap 8937
 Marands Royal Lady 8847

CED		BW		WW		YW		MILK	
+1		+3.3		+50		+91		+21	
CWT	MARB	RE	FAT	SM	SW	SB	SC		
+33	+12	+69	+020	+48	+42	+104	+183		

■ Sells open. Genomic EPDs are in progress and will be available sale day.

Genex on SAV Resource 1441:

"When we decided to devote a spread to GENEX legends, it was an easy decision to anchor the page with Resource."

Perhaps Resource's greatest legacy will be his daughters who are writing their own page in Angus history. They are appreciated by astute cattlemen worldwide for their abundant body capacity, fleshing ability, foot quality and temperament."

Annie K 912 + 4 Full Sister Heifer Embryos!

We selected Soo Line Annie K 1008 as a genetically unique donor for LCCC because females of this line are instantly recognizable and create a lasting memory.

The dam of Lot 23 is the EXAR Denver daughter of 1008, and the granddaughter of Canadian Western Agribition and World Angus Forum Champion, Soo Line Annie K 9165, featured in the Brooking Angus Ranch program in Saskatchewan. 9165's sons and daughters are consistently top sellers and the "talk" of the Canadian Angus scene.

GQ females are highly favored in sales and shows. 1444 has produced two super daughters, one a past Belle Point sale topper. Lot 23 proves this mating is a sure thing!



Silveiras S Sis GQ 2353 – Sire of Lots 23 and 23A



LCCC Annie K 1444 ET – Dam of Lots 23 and 23A



LCCC Annie K 912 – Lot 23

23 LCCC Annie K 912

Birth Date: 9-29-2019 Cow +19542977 Tattoo: 912
 +*Silveiras Style 9303 Gambles Hot Rod
 Silveiras S Sis GQ 2353 +Silveiras Elba 2520
 +*17322546 *KNC Cabin Creek Sandy 804 #+BC Lookout 7024
 KNC Cabin Creek Sandy
 #*EXAR Denver 2002B #*EXAR Upshot 0562B
 LCCC Annie K 1444 ET +Exar Royal Lass 1067
 +*17945180 Soo Line Annie K 1008 #*Soo Line Motive 9016
 Soo Line Annie K 9165

CED		BW		WW		YW		MILK	
+3		+2.4		+42		+72		+34	
CWT	MARB	RE	FAT	\$M	\$W	\$B	\$C		
+20	+66	+39	-.013	+27	+50	+113	+177		

■ Offered by Little Cedar Cattle Co., Beaverton, Michigan.
 Sells open.

23A GQ x Annie K 1444 Heifer Embryos

+*Silveiras Style 9303 Gambles Hot Rod
 Silveiras S Sis GQ 2353 +Silveiras Elba 2520
 +*17322546 *KNC Cabin Creek Sandy 804 #+BC Lookout 7024
 KNC Cabin Creek Sandy
 #*EXAR Denver 2002B #*EXAR Upshot 0562B
 LCCC Annie K 1444 ET +Exar Royal Lass 1067
 +*17945180 Soo Line Annie K 1008 #*Soo Line Motive 9016
 Soo Line Annie K 9165

CED		BW	WW	YW	MILK			
S	+3	+3.6	+35	+66	+35			
D	+12	-.1	+49	+97	+19			
CWT		MARB	RE	FAT	SM	SW	SB	SC
S	+3	+66	-15	+.023	+11	+37	+81	+150
D	+25	+56	+55	+.011	+45	+48	+112	+190

■ Offered by Little Cedar Cattle Co., Beaverton, Michigan.
 Offering 4 sexed heifer embryos. Stored at GGS Genetics, Dewitt, Michigan.
 One pregnancy is guaranteed.

Here's a "Special" herd sire in development who's got the "Entensity" to do it ALL!



LCCC Special Force 913 – Lot 24

Hoover Angus on Baldridge 38 Special:

"The marbling king at Hoover Angus with frame, performance, and eye appeal! 38 Special was definitely the power, high performance bull of his flush and a standout with added frame in the Baldridge offering. He is a unique blend of his sire's calving ease and his dam's big frame and power. Isabel Y69 is the most influential cow in Baldridge Bros. history."

24 LCCC Special Force 913

Birth Date: 9-20-2019 Bull *19542978 Tattoo: 913

Baldridge 38 Special
+*18229487 EF Commando 1366 EF Complement 8088
Baldridge Isabel Y69 Riverbend Young Lucy W1470
Styles Upgrade J59
Baldridge Isabel T935

PF Ever Entense 5080 #*EXAR Denver 2002B #*EXAR Upshot 0562B
+*18157402 +*PF Ever Entense 0273 +Exar Royal Lass 1067
#*SAV Bismarck 5682
+*C&H Ever Entense 4038

CED		BW		WW		YW		MILK	
+7		+1.6		+69		+118		+23	
CWT	MARB	RE	FAT	\$M	\$W	\$B	\$C		
+44	+1.04	+66	+0.22	+58	+71	+161	+267		

Actual BW 76, Actual WW on 3/4/20: 710
Genomic EPDs are in progress and will be available sale day.



Baldridge 38 Special – Sire of Lot 24



PF Ever Entense 5080 – Dam of Lot 24

WWDD?

He'd let you "brand"
Special Force with
YOUR prefix of course!

The lead three-year-old of the fall calving division in the 2018 Pollard Farms sale, his dam exemplifies the phenotype and numeric qualities that are the Pollard standard, and 38 Special made him a BEEF BULL! Special Force's EASY-TO-WORK disposition would be a BIG PLUS in a herd sire. Hey, he could be a heckuva SHOW BULL too!

Meet the
people
behind the
LCCC prefix...



Steve & Julie French, Beaverton, Michigan
www.redwhiteandroan.com
www.littlecedarcattlecompany.com
Steve: 989-798-8223 Julie: 989-965-6363

Little Cedar Cattle Co. is home to a leading Shorthorn breeding program operated by Steve and Julie French, a daughter of the late David and Mary Ann McMahon. Since their marriage 18 years ago, they have also developed a powerful set of ANGUS females at their ranch in central Michigan.

Steve is a broker of plastics raw materials, and he's also on-the-job everyday as a cattle breeder. He's a diligent student of the breeds, and a master at selecting, developing and mating cattle.

Julie is an OSU graduate in Animal Science/Livestock Merchandising. She directs and implements promotional strategies for LCCC and BPR year-round, along with advising clients on the development of new projects and collaborating on innovative promotional programs. She an enthusiastic supporter of the Angus Foundation, continually helping expand awareness and raise funds.

Steve and Julie actively contribute to Belle Point's management and development on a daily basis, in regular meetings with family members and ranch staff, selecting cattle from national level auctions, determining AI matings, and planning the sale. They're optimistic and enthusiastic about what's ahead on Belle Point's path toward the future.



LCCC Ida Belle 910 – Lot 25



The Ida Belles
of Woodlawn

The Lucy line of
Summitcrest



LCCC Casino Lucy 907 – Lot 26

25

LCCC Ida Belle 910 [OHF]

Birth Date: 5-30-2019

Cow 19542979

Tattoo: 910

*Jindra Acclaim

*Jindra 3rd Dimension

+Jindra Blackbird Lassy 1111

Whitstone 18-Million

Whitstone Everelda 5109

#*Connealy Black Granite

*18000000

Whitstone Everelda C059

ANGUS

#*Soo Line Motive 9016

HF Kodiak 5R

TLA Beauty 5R

LCCC Ida Belle Motive1317

#*Northern Improvement 4480 GF

Ida Belle 951 of Woodlawn

17800774

LCCC Ida Belle 400

CED	BW	WW	YW	MILK
+8	+6	+72	+131	+27

CWT	MARB	RE	FAT	\$M	\$W	\$B	\$C
+55	+60	+66	-.031	+42	+74	+163	+253

■ Sells open.

the Best **BRAND NAMES**
in the business!

LOT 25

Woodlawn Ida Belle is
synonymous with good
phenotype and good numbers.

A brand name that means big time
value and long-term acceptability.

This daughter of 18-Million has
“got it goin’ on” in every department.

(How’s that for some judging team jargon, Blanford?)

LOT 26

Granddaughter of Lucy 131, the ROV
Reserve Dam, Lucy 907 has earned the
title “Cow Prospect of the Year” at LCCC.
She is helping prove her mother, Lucy 708,
to be the successor of the great 131 –
and that’s saying quite a LOT!

26

LCCC Casino Lucy 907

Birth Date: 3-12-2019

Cow 19427652

Tattoo: 907

KR Casino 6243

*CFCC Black Jack 001

*Silveiras El Capitan 6510

+*18624063

*Malsons Savannah 27Y

CFCC Fantasia Dateline 633

VAR Allegiance 5157

+Malsons Savannah 27W

ANGUS

##*SAV Renown 3439

+Rito 707 of Ideal 3407 7075

LCCC Lucy Renown 708

*SAV Blackcap May 4136

18868726

LCCC Lucy 131

#SAV Net Worth 4200

Summitcrest Lucy L021

CED	BW	WW	YW	MILK			
-4	+5.0	+68	+113	+27			
CWT	MARB	RE	FAT	\$M	\$W	\$B	\$C
+50	+10	+75	+.043	+34	+62	+113	+181

■ Sells open.



Whitestone 18-Million – Sire of Lot 25



KR Casino 6243 – Sire of Lot 26

Exclusive ET PRODUCTION from LCCC's

Lucy Family



E&B Plus One – Sire of Lot 27

ORIGEN on E&B Plus One:

"Quite possibly the most widely-used yearling bull of 2019, this \$68,000 top-selling bull of the 2019 Benoit sale in Kansas is an extra thick and deep son of the very popular Confidence Plus. He will likely be one of the most heavily-used sons of his sire for several years to come and an influential young Angus sire around the world."

Lot 27 is among the very first Plus One embryos to sell!

We have a Lucy 131 son by Confidence Plus (sire of Plus One) that's really good – you'll be seeing him soon!



LCCC Lucy 131 – Dam of Lot 27

27 Plus One x Lucy 131 Embryos

E&B Plus One
#*19196960

*Connealy Confidence Plus
#*E&B Lady 1023 Precision 936

#SAV Net Worth 4200
Summitcrest Lucy L021

#*Connealy Confidence 0100
Elbanna of Conanga 1209
#*E&B 1680 Precision 1023
E&B Lady 878 New Design 441

#SAV 8180 Traveler 004
+SAV May 2410
#*Twin Valley Precision E161
Summitcrest Lucy J116

	CED	BW	WW	YW	MILK
S	+9	+6	+66	+130	+25
D	+1	+3.6	+44	+78	+25

	CWT	MARB	RE	FAT	SM	SW	SB	SC
S	+56	+.95	+.91	+.001	+78	+70	+186	+319
D	+43	+.55	+.63	+.024	+25	+38	+153	+223

■ Offered by Little Cedar Cattle Co., Beaverton, Michigan.
Offering 4 embryos. Stored at GGS Genetics, Dewitt, Michigan.
One pregnancy is guaranteed.

Lucy 131 is the foundation of Little Cedar's Angus breeding program. She is an own daughter of Summitcrest Lucy L021, bred by the visionary Angus breeder and CAB founding father, Fred Johnson.



LCCC Lucy All Star 1231 – Daughter of Lucy 131

Lucy 131 has produced great sons and daughters that have been featured in this sale. You may recall her extraordinary daughter, Lucy All Star 1231, the competitive ROV Champion for Sankey's 6N Ranch and Doug Satree Angus and now a productive donor for those herds. 131's exceptional Renown daughter, the dam of Lot 26, is stepping up to replace her in our program. (Those are some pretty big hooves to fill!)

The **Springtime REVIVAL**

Sunday, April 5 at 2 p.m. CST

Little Cedar Cattle Co. and Revival Sale Consignors from all over the U.S. invite you to the 5th annual Springtime Revival Sale

NEW Offering and NEW Consignors!

Shorthorn & ShorthornPlus • Angus • Hereford • Simmental
Elite Show Heifers • Exciting Pregnancies & Embryos • Rare Semen
Little Cedar Cattle Co., Greenhorn Cattle Co., Sullivan Farms,
Conley Cattle, Doug Satree Angus, Lewis Show Cattle,
Greenwood Farms LLC, Weeping Fox Ranch and Belle Point Ranch



NEW Sale Format!

It's a LIVE AUCTION conducted at the CCI.Live Studio. Sale lots are displayed on video and sold by an auctioneer. The broadcast and bidding are "live" and "online" in real time.

Visit CCI.Live to view the offering!

Exclusive ET PRODUCTION from LCCC's

Georgina Family



Champion Hill Georgina 8547

Dam of LRF David's Georgina 7606, the donor of Lots 28A & 28B

ST Genetics on Conley Express 7211:

"The premier young show sire in the Angus breed and standout of the 2018 Denver pens...outcross to First Class and other popular pedigrees, he provides exceptional mating flexibility with no compromises in phenotype and power...his legendary dam has a track record for producing showring standouts and Express adds to her superiority as an icon of the Angus breed."

Two-time Roll of Victory
Show Heifer of the Year
2014-15 and 2015-16

Now a donor in Matthew Maher's growing program in Texas, the dam of these embryos was Steve's pick of the dispersal at David and Lanas Smith's Lookout Ridge Farm a couple of years ago. Georgina 7606 was produced by a two-time ROV Show Heifer of the Year, and her granddam earned the SAME TITLE ten years prior. Steve's mating of 7606 to Conley Express and Poss Maverick produced HEIFER MATINGS so desirable that ONE (and only one) package of FOUR will sell – ponder the possibilities!



Conley Express 7211 – Sire of Lot 28A

Buyer's Choice of Sires!

Poss Angus Ranch on Poss Maverick:

"Poss Maverick sold in our 2018 sale as the all-time high selling bull to Belvin Angus and Semex. The Maverick progeny have surpassed our expectations in terms of elite phenotype and carrying on his incredible EPD profile. Maverick's elite combination of \$B, Marb, and phenotype make him a must use sire. The exciting first calf crop by Maverick is a group that has created quite the stir throughout the Angus breed. The ability of backing up the genomic power with scale crushing data is what makes Maverick so unique."

The first Maverick sexed heifer eggs to sell!



Poss Maverick – Sire of Lot 28B

**Offering ONE CHOICE of the
Georgina 7606 HEIFER Embryo Packages
Lot 28A or Lot 28B**

28A Conley Express x Georgina 7606

Conley Express 7211
+*18941522

+*Sma Watchout 482
+*DPL Sandy 3040

+*SAV Sensation 5615
LRF David's Georgina 7606
+*19067778

+*Champion Hill Georgina 8547

+*Silveiras Watchout 0514
+*2K Beauty 961
+*Silveiras Style 9303
+*KNC Cabin Creek Sandy 804

#+*SAV Registry 2831
+*SAV Blackcap May 4136
#+*SAV Angus Valley 1867
+CHAMPION HILL Georgina 3080

	CED	BW	WW	YW	MILK
S	-2	+3.6	+61	+101	+16
D	+2	+1.8	+49	+97	+19

	CWT	MARB	RE	FAT	SM	SW	SB	SC
S	+30	+67	+06	+0	+4	+41	+127	+169
D	+31	+54	+74	-004	+30	+39	+128	+196

■ Offered by Little Cedar Cattle Co., Beaverton, Michigan.

Offering 4 sexed heifer embryos. Stored at GGS Genetics, Dewitt, MI.
One pregnancy is guaranteed.

28B Poss Maverick x Georgina 7606

Poss Maverick
+*18962396

+*Basin Payweight 1682
Poss Pride 5163

+*SAV Sensation 5615
LRF David's Georgina 7606
+*19067778

+*Champion Hill Georgina 8547

+*Basin Payweight 006S
21AR O Lass 7017
+*Poss Hoover Dam 2509
+Poss Pride 9526

#+*SAV Registry 2831
+*SAV Blackcap May 4136
#+*SAV Angus Valley 1867
+CHAMPION HILL Georgina 3080

	CED	BW	WW	YW	MILK
S	+2	+1.5	+70	+127	+37
D	+2	+1.8	+49	+97	+19

	CWT	MARB	RE	FAT	SM	SW	SB	SC
S	+71	+1.46	+70	+009	+41	+82	+222	+329
D	+31	+54	+74	-004	+30	+39	+128	+196

■ Offered by Little Cedar Cattle Co., Beaverton, Michigan.

Offering 4 sexed heifer embryos. Stored at GGS Genetics, Dewitt, MI.
One pregnancy is guaranteed.



SydGen Fate 2800 – Sire of Lots 29, 30 and 31

HINT: RIGHT NOW WOULD BE A
GOOD TIME TO SWEEP THE RING

**3 Bred Heifers by SydGen Fate
Safe to Northside** Read about growing
first calf heifers
on page 34.

Shirley got started in the Angus business
right here at Belle Point...and so can you!



Bakers Northside 6007 – AI Service Sire of Lots 29, 30 and 31

“Your big Opportunity may be where you are right now.” *Napoleon Hill
Think and Grow Rich*

29 F O F Basin Pride 802H

Birth Date: 8-28-2018 Cow 19435337 Tattoo: 802H
#*SydGen Trust 6228 *SCR Promise 4042
+SydGen Forever Lady 4413
+SydGen Heroine 9808 #SydGen Contact
#DAAR Heroine LT 108
#*SQ Credence 67S #*SS Objective T510 OT26
+*Rita 3540 of 021 Rito 111
#Vermilion Payweight J847
#Basin Pride 1626 #Basin Pride 998L

CED		BW		WW		YW		MILK	
+10		+6		+59		+109		+34	
CWT	MARB	RE	FAT	\$M	\$W	\$B	\$C		
+43	+97	+43	+051	+32	+68	+143	+217		

Offered by Fair Oaks Farm, Van Buren, AR.
AI bred on 11-21-2019 to Bakers Northside 6007, ultrasounded safe.
Due 8-20-2020.

30 F O F Annie 804H

Birth Date: 8-31-2018 Cow *19435335 Tattoo: 804H
#*SydGen Trust 6228 *SCR Promise 4042
+SydGen Forever Lady 4413
+SydGen Heroine 9808 #SydGen Contact
#DAAR Heroine LT 108
+*ONeills Lucky Boy #Isu Imaging Q 9111
#O'Neill Delia 715
#TC Total 410
#Rodens DF Annie 7035

CED		BW		WW		YW		MILK	
+6		+3.0		+67		+125		+24	
CWT	MARB	RE	FAT	\$M	\$W	\$B	\$C		
+59	+80	+78	-.026	+26	+56	+185	+266		

Offered by Fair Oaks Farm, Van Buren, AR
AI bred on 12-25-2019 to Bakers Northside 6007, ultrasounded safe.
Due 10-3-2020.

31 F O F Queen 808I [DDF]

Birth Date: 9-11-2018 Cow *19435334 Tattoo: 808I
#*SydGen Trust 6228 *SCR Promise 4042
+SydGen Forever Lady 4413
+SydGen Heroine 9808 #SydGen Contact
#DAAR Heroine LT 108
+*RB Tour Of Duty 177 #*Werner War Party 2417
+*BA Lady 6807 305
#TC Total 410
#FOF Queen 026J

CED		BW		WW		YW		MILK	
+2		+3.1		+59		+106		+32	
CWT	MARB	RE	FAT	\$M	\$W	\$B	\$C		
+48	+76	+85	- 015	+41	+60	+163	+252		

Offered by Fair Oaks Farm, Van Buren, AR
AI bred on 1-5-2020 to Bakers Northside 6007, ultrasounded safe.
Due 10-13-2020.

Meet the
people
behind the
FOF prefix...



Fred & Shirley Williams
Van Buren, Arkansas
Shirley: 479-651-8302
E-mail: williamsfair Oaks@aol.com

For many years, the Belle Point sale has featured sale lots from the herd of our great friends and neighbors, Fred and Shirley Williams. Shirley is a past president of the American Angus Auxiliary and Fred's advertising agency keeps him movin' and shakin' and involved in pretty much everything around "River City."

Shirley is well known in these parts as a very good "cowman!" Her cow business philosophy is rooted in Fred's steady reminder that the margin of profit on seedstock cattle can be pretty slim. She stays focused on constant production, and the carcass characteristics that ensure high quality BEEF!

Over the years, Shirley has been mentored by some of the breed's greatest cowmen that she met right here at Belle Point. She listens, and thinks, and applies data to practical performance characteristics – udder quality, fertility and cow and calf condition at weaning. Good people, good cattle!





SydGen Enhance – Sire of FOF calves at side of Lots 32 through 38

*Enhance
Your
Herd*

enhance

Definition: intensify, increase, or further improve the quality, value or extent of

Usage: Wow, these good fall calves sure do enhance the value of their dams!

ORlgen on SydGen Enhance:

"Enhance is the ORlgen sales leader for 2019 after ranking among the top five sales sires from ORlgen in 2018.

This international favorite increases in popularity as his first calf crops continue to dominate sales – a son topped the 2018 Mogck & Sons Bull Sale at \$42,000 while another was the \$24,000 top-selling fall yearling of the 2018 SydGen Fall Sale, where daughters sold for \$85,000 and \$70,000 as two of the top three fall yearling females, another sold for \$40,000 as the top-selling spring heifer calf.

In the fall of 2019, daughters of Enhance sold half-interest for \$310,000 at Riverbend, \$300,000 at Ankony, \$200,000 at Express and \$110,000 and \$70,000 at Vintage where another sold for \$100,000 with another selling for \$200,000 at EZ Angus Ranch.

A son sold half-interest for \$90,000 to top the 2019 bull sale at Vintage. Other sons sold half-interest for \$35,000 at FHCC, and \$19,000 as the top-selling half-interest bull calf at SydGen in 2019. Another sold two-thirds for \$25,000 as the top-selling fall yearling at Express, and he now records the Number 1 \$Beef value index and Number 1 \$Combined value index at ORlgen."

SydGen Enhance is owned by Sydenstricker Genetics, Mexico, MO and Mogck & Sons Angus Farms, Olivet, SD

Lots 32 – 35 4 First Calf Heifers Safe to AI Sires

*Enhanced by their
enchanted Fall Calves!*

32 F O F Queen 714I

Birth Date: 9-21-2017	Cow *18976376	Tattoo: 714I
WR Journey-1X74 #*16924332	*B/R Future Direction 4268 2 Bar 5050 New Design 7831	#CA Future Direction 5321 B/R Ruby 9114 #*GAR New Design 5050 2 Bar 036 Lady 0107
FOF Queen 120J 17213087	+*ONeills Lucky Boy FOF Queen 744J	#Isu Imaging Q 9111 ONeills Delia 715 #EXAR 263C Fof Queens Scotch Cap 019I

CED		BW		WW		YW		MILK	
+10		-1		+45		+93		+24	
CWT	MARB	RE	FAT	\$M	\$W	\$B	\$C		
+36	+93	+83	+004	+45	+44	+162	+255		

■ Offered by Fair Oaks Farm, Van Buren, AR
AI bred on 12-10-2019 to SydGen KCF Gavel, ultrasounded safe.
Due 9-18-2020.

32A F O F Queen 917I

Birth Date: 9-20-2019	Cow *19664692	Tattoo: 917I
SydGen Enhance 18170041	*SydGen Exceed 3223 SydGen Rita 2618	+*SydGen Googol +*SydGen Forever Lady 1255 #*SydGen Liberty GA 8627 #Fox Run Rita 9308
FOF Queen 714I *18976376	#*WR Journey-1X74 FOF Queen 120J	*B/R Future Direction 4268 2 Bar 5050 New Design 7831 +*ONeills Lucky Boy FOF Queen 744J

CED		BW		WW		YW		MILK	
+8		+2.0		+78		+145		+25	
CWT	MARB	RE	FAT	\$M	\$W	\$B	\$C		
+75	+1.09	+71	+008	+65	+79	+207	+333		

■ Offered by Fair Oaks Farm, Van Buren, AR



SydGen KCF Gavel – AI Service Sire of Lots 32, 33, 36, 37 and 38



Bakers Northside 6007 – AI Service Sire of Lot 34



EWA Peyton 642 – AI Service Sire of Lot 35

33 F O F Annie 7111

Birth Date: 9-11-2017 Cow *18976374 Tattoo: 7111

WR Journey-1X74
#*16924332



FOF Annie 4121
17916335

*B/R Future Direction 4268

2 Bar 5050 New Design 7831

#*Deer Valley All In

FOF Annie 8221

#CA Future Direction 5321

B/R Ruby 9114

#*GAR New Design 5050

2 Bar 036 Lady 0107

#*AAR Ten X 7008 SA

+*Deer Valley Rita 0274

#TC Total 410

Rodens DF Annie 7035

CED		BW		WW		YW		MILK	
+8		+8		+59		+100		+24	
CWT	MARB	RE	FAT	\$M	\$W	\$B	\$C		
+37	+39	+62	-0.034	+55	+63	+141	+238		

■ Offered by Fair Oaks Farm, Van Buren, AR
AI bred on 12-8-2019 to SydGen KCF Gavel, ultrasounded safe.
Due 9-16-2020.

34 MOGCK Entello 2477

Birth Date: 1-30-2017 Cow *18879336 Tattoo: 2477

VAR Index 3282
*17513381



Mogck Entello 652
18097146

#*GAR Ingenuity

+*Sandpoint Blackbird 8809

#*Connealy Mentor 7374

Mogck Entello 979

#*GAR New Design 5050

GAR Objective 1067

#*Connealy Onward

+Riverbend Blackbird 4301

#GAR Retail Product

#Executa of Conanga 939

MOGCK Whispering Wind 1297

Mogck Entello 1287

CED		BW		WW		YW		MILK			
+11		+4		+54		+100		+16			
CWT	MARB	RE		FAT		\$M		\$B		SC	
+39	+77	+86		+011		+27		+45		+154	+227

■ Offered by Fair Oaks Farm, Van Buren, AR
AI bred on 2-19-2020 to Bakers Northside 6007, ultrasounded safe.
Due 11-27-2020.

35 F O F Basin Lucy 718J

Birth Date: 10-5-2017 Cow 18976377 Tattoo: 718J

SydGen Blacksmith 4010
*17871732



Basin Lucy 9206
+16400003

+2 Bar Deaf Smith

#*SydGen June 1239

+Basin Expedition 1165

Basin Lucy 306R

#B/R Ambush 28

2 Bar 5050 New Design 8050

#*SydGen Contract 9410

+SydGen June 7600

#Gardens Expedition

Basin Primrose Lady 5287

#Vermilion Payweight J847

+Basin Lucy 7333

CED		BW	WW	YW	MILK		
+7		+2	+59	+109	+26		
CWT	MARB	RE	FAT	\$M	\$W	\$B	\$C
+57	+50	+70	+016	+57	+64	+158	+262

■ Offered by Fair Oaks Farm, Van Buren, AR
AI bred on 1-6-2020 to EWA Peyton 642, ultrasounded safe.
Due 10-14-2020.

33A F O F Annie 903H

Birth Date: 8-24-2019 Cow *19664694 Tattoo: 903H

SydGen Enhance
18170041



FOF Annie 7111
*18976374

*SydGen Exceed 3223

SydGen Rita 2618

#*WR Journey-1X74

FOF Annie 4121

+*SydGen Googol

+*SydGen Forever Lady 1255

#*SydGen Liberty GA 8627

#Fox Run Rita 9308

*B/R Future Direction 4268

2 Bar 5050 New Design 7831

#*Deer Valley All In

FOF Annie 8221

CED		BW		WW		YW		MILK	
+14		-1.3		+64		+127		+33	
CWT	MARB	RE	FAT	\$M	\$W	\$B	\$C		
+59	+72	+73	+003	+55	+75	+186	+296		

■ Offered by Fair Oaks Farm, Van Buren, AR

34A F O F Entello 918I

Birth Date: 9-20-2019 Cow *19664701 Tattoo: 918I

SydGen Enhance
18170041



MOGCK Entello 2477
*18879336

*SydGen Exceed 3223

SydGen Rita 2618

+*VAR Index 3282

Mogck Entello 652

+*SydGen Googol

+*SydGen Forever Lady 1255

#*SydGen Liberty GA 8627

#Fox Run Rita 9308

#*GAR Ingenuity

+*Sandpoint Blackbird 8809

#*Connealy Mentor 7374

Mogck Entello 979

CED		BW		WW		YW		MILK	
+11		+1.7		+65		+129		+24	
CWT	MARB	RE	FAT	\$M	\$W	\$B	\$C		
+61	+99	+1.07	+0.04	+58	+63	+199	+316		

■ Offered by Fair Oaks Farm, Van Buren, AR

35A F O F Lucy 904H

Birth Date: 8-26-2019 Cow *19664689 Tattoo: 904H

SydGen Enhance
18170041



FOF Basin Lucy 718J
18976377

*SydGen Exceed 3223

SydGen Rita 2618

*SydGen Blacksmith 4010

+Basin Lucy 9206

+*SydGen Googol

+*SydGen Forever Lady 1255

#*SydGen Liberty GA 8627

#Fox Run Rita 9308

+2 Bar Deaf Smith

#*SydGen June 1239

+Basin Expedition 1165

Basin Lucy 306R

CED		BW		WW		YW		MILK	
+10		+1.0		+79		+136		+23	
CWT	MARB	RE	FAT	\$M	\$W	\$B	\$C		
+75	+50	+90	+018	+73	+82	+179	+305		

■ Offered by Fair Oaks Farm, Van Buren, AR

36 F O F Chloe 424I [OSF]

Birth Date: 9-27-2014 Cow 17916338 Tattoo: 424I

#*Connealy Confidence 0100 Connealy Tobin
Becka Gala of Conanga 8281
#*17302304 Pearl Pammy of Conanga 194
#Vermilion Dateline 7078
#Pearl Jam of Conanga 6114

FOF Fendi 802I
16316082

#TC Total 410
#Fof Miss Fendi 533J

#Bon View New Design 208
+TC Erica Eileen 2047
#GAR Precision 1680
Woody Crest Emulous 7401

CED		BW	WW	YW	MILK		
+9		-2	+56	+100	+24		
CWT	MARB	RE	FAT	\$M	\$W	\$B	\$C
+32	+67	+73	+00	+47	+60	+147	+238

■ Offered by Fair Oaks Farm, Van Buren, AR
AI bred on 12-27-2019 to SydGen KCF Gavel, ultrasounded safe.
Due 10-05-2020.

37 F O F Coquette 625I [DDF]

Birth Date: 9-16-2016 Cow 18721439 Tattoo: 625I

#*Connealy Consensus 7229
#*Connealy Consensus
Blue Lilly of Conanga 16
#CA Future Direction 5321
+*Rita 1198 of 2536 Rito 616

Woodside
+*17862852

+*Rita 5F56 of 1198 FD

#*Rito 9Q13 of Rita 5F56 GHM
#Gardens Highmark
+*Rita 5F56 of 1198 FD
#*GAR Predestined
FOF Coquette 219I

FOF Coquette 304H
17729366

FOF Coquette 531J

CED		BW		WW		YW		MILK	
+2		+3.9		+67		+112		+23	
CWT	MARB	RE	FAT	\$M	\$W	\$B	\$C		
+56	+62	+52	+020	+33	+59	+160	+241		

■ Offered by Fair Oaks Farm, Van Buren, AR
AI bred on 1-2-2020 to SydGen KCF Gavel, ultrasounded safe.
Due 10-10-2020.

38 F O F Queen 602H

Birth Date: 8-17-2016 Cow 18721415 Tattoo: 602H

#*Connealy Consensus 7229
#*Connealy Consensus
Blue Lilly of Conanga 16
#CA Future Direction 5321
+*Rita 1198 of 2536 Rito 616

Woodside
+*17862852

+*Rita 5F56 of 1198 FD

#Summitcrest High Prime 0H29
#Gardens Prime Time
Summitcrest Missie 2F55
#Scotch Cap
DF Queen 7095

FOF Queen High Prime 544K
15313903

Fof Queens Scotch Cap 019I

CED		BW		WW		YW		MILK	
+2		+2.2		+47		+83		+20	
CWT	MARB	RE	FAT	\$M	\$W	\$B	\$C		
+37	+91	+48	+022	+28	+41	+151	+224		

■ Offered by Fair Oaks Farm, Van Buren, AR
AI bred on 12-7-2019 to SydGen KCF Gavel, ultrasounded safe.
Due 9-15-2020.

36A F O F Fendi 920I

Birth Date: 9-22-2019 Cow *19664738 Tattoo: 920I

*SydGen Exceed 3223
+*SydGen Googol
+*SydGen Forever Lady 1255
#*SydGen Liberty GA 8627
#Fox Run Rita 9308

SydGen Enhance
18170041

SydGen Rita 2618

#*Connealy Courage 25L
#*Connealy Confidence 0100
Pearl Pammy of Conanga 194
#TC Total 410
+FOF Miss Fendi 533J

FOF Chloe 424I
17916338

FOF Fendi 802I

CED		BW	WW	YW	MILK		
+9		+1.0	+69	+121	+30		
CWT	MARB	RE	FAT	\$M	\$W	\$B	\$C
+52	+90	+72	+0	+66	+81	+176	+294

■ Offered by Fair Oaks Farm, Van Buren, AR

37A F O F Enhance 909I

Birth Date: 9-12-2019 Bull *19664709 Tattoo: 909I

*SydGen Exceed 3223
+*SydGen Googol
+*SydGen Forever Lady 1255
#*SydGen Liberty GA 8627
#Fox Run Rita 9308

SydGen Enhance
18170041

SydGen Rita 2618

+*Woodside
#*Connealy Consensus 7229
+*Rita 5F56 of 1198 FD
+*Rito 9Q13 of Rita 5F56 GHM
FOF Coquette 531J

FOF Coquette 625I
18721439

FOF Coquette 304H

CED		BW		WW		YW		MILK	
+7		+1.8		+77		+143		+28	
CWT	MARB	RE	FAT	\$M	\$W	\$B	\$C		
+64	+1.11	+66	+053	+48	+81	+190	+294		

■ Offered by Fair Oaks Farm, Van Buren, AR

38A F O F Enhance 908I

Birth Date: 9-11-2019 Bull *19664711 Tattoo: 908I

*SydGen Exceed 3223
+*SydGen Googol
+*SydGen Forever Lady 1255
#*SydGen Liberty GA 8627
#Fox Run Rita 9308

SydGen Enhance
18170041

SydGen Rita 2618

+*Woodside
#*Connealy Consensus 7229
+*Rita 5F56 of 1198 FD
#Summitcrest High Prime 0H29
Fof Queens Scotch Cap 019I

FOF Queen 602H
18721415

FOF Queen High Prime 544K

CED		BW		WW		YW		MILK	
+5		+2.2		+61		+108		+27	
CWT	MARB	RE	FAT	\$M	\$W	\$B	\$C		
+56	+99	+74	+013	+56	+68	+178	+287		

■ Offered by Fair Oaks Farm, Van Buren, AR

We've made parking your trailer and loading out easier and safer!

Completed South Side
Working Facility

Intersection
Hwy 22 &
Hwy 96

ENTRANCE

ROAD TO LOAD OUT

ROAD TO LOAD OUT

DRIVE-THRU
LOAD OUT

NEW TRAILER
PARKING AREA

SALE HQ

New Pens & Alleys
on North Side

N
▼



E&B Plus One – AI Service Sire of Lots 40, 41 and 42



Mogck Entice – AI Service Sire of Lot 43



44 Ruby 7481 – Lot 43

41 Cherry Crk Thunderella C299M [OHF-DDF]

Birth Date: 9-12-2015 Cow 18519687 Tattoo: C299

#*Connealy Consensus #KMK Alliance 6595 187
Connealy Consensus 7229 Blinda of Conanga 004
#*16447771 Blue Lilly of Conanga 16 #Woodhill Admiral 77K
Blue Cash of Conanga 6020



#*SAV Iron Mountain 8066 #TC Gridiron 258
Cherry Crk Thunderella 2164M SAV Madame Pride 3249
17581881 +Ms CC Thunderella 24-8443 #*LCC New Standard
Ms CC Thunderella 012-24

CED		BW		WW		YW		MILK	
-2		+4.3		+63		+99		+22	
CWT	MARB	RE	FAT	\$M	\$W	\$B	\$C		
+34	+1.06	+28	+0.12	+79	+61	+137	+257		

■ Ultrasounded on 2-10-2020, 60 days safe to E&B Plus One, due 9-18-2020.

A high maternal daughter of the foundation female sire, Consensus, and the legendary Thunderella cow family.

41A BP Diablo Deluxe I509

Birth Date: 9-16-2019 Bull 19596587 Tattoo: I509

#*VAR Discovery 2240 #*AAR Ten X 7008 SA
Diablo Deluxe 1104 +*Deer Valley Rita 0308
*18741751 Diablo Erica Dianna 9034 #*GAR Prophet
+Diablo Erica Dianna 5010

#*Connealy Consensus 7229 #*Connealy Consensus
Cherry Crk Thunderella C299M Blue Lilly of Conanga 16
18519687 Cherry Crk Thunderella 2164M #*SAV Iron Mountain 8066
+Ms CC Thunderella 24-8443

CED		BW		WW		YW		MILK	
+6		+1.6		+73		+124		+23	
CWT	MARB	RE	FAT	\$M	\$W	\$B	\$C		
+58	+1.04	+44	+0.05	+77	+72	+164	+290		

■ Genomic EPDs are in progress and will be available sale day.

42 Champion Hill Shadoe 8796

Birth Date: 3-5-2015 Cow +*18161598 Tattoo: 8796

#*SAV Harvester 0338 #*SAV Heritage 6295
SAV Hesston 2217 +*SAV Emblynette 7749
+*17318946 +SAV Emblynette 3301 #*SAF 598 Bando 5175
#SAV Emblynette 7319



*SAV Brave 8320 #*SAV Mandan 5664
Champion Hill Shadoe 8107 #*SAV May 2397
+*17104592 +*Champion Hill Shadoe 6814 #*SAV Bismarck 5682
+CHAMPION HILL Shadoe 3130

CED		BW	WW	YW	MILK		
+0		+4.2	+59	+93	+18		
CWT	MARB	RE	FAT	\$M	\$W	\$B	\$C
+29	+4.0	+64	-0.09	+58	+50	+119	+212

■ Ultrasounded on 2-10-2020, 60 days safe to E&B Plus One, due 9-18-2020.

From the famous show heifer Shadoe family that made a major impact at Champion Hill and Quintin Smith Family programs.

42A BP Know How I549

Birth Date: 9-18-2019 Bull 19590060 Tattoo: I549

+*Hoover No Doubt #*Mogck Bullseye
Hoover Know How +*Miss Blackcap Ellston J2
*18543644 #Blkcp Empress Ellston L265 +SydGen Storm 8504
Blkcp Empress Ellston J120

+*SAV Hesston 2217 #*SAV Harvester 0338
Champion Hill Shadoe 8796 +SAV Emblynette 3301
+*18161598 +*Champion Hill Shadoe 8107 *SAV Brave 8320
+*Champion Hill Shadoe 6814

CED		BW		WW		YW		MILK	
-3		+5.3		+63		+117		+20	
CWT	MARB	RE	FAT	\$M	\$W	\$B	\$C		
+45	+ .65	+ .85	-.005	+57	+41	+171	+279		

■ Genomic EPDs are in progress and will be available sale day.

43 44 Ruby 7481

Birth Date: 9-3-2017 Cow *18875579 Tattoo: 7481

#*VAR Discovery 2240 #*AAR Ten X 7008 SA
44 Bragging Rights 4372 +*Deer Valley Rita 0308
+*17894794 +*44 Ruby 2357 #*Connealy Capitalist 028
+*44 Ruby X110



#*VAR Discovery 2240 #*AAR Ten X 7008 SA
44 Ruby 5794 +*Deer Valley Rita 0308
+*18300450 +*44 Ruby X110 #*B/R Ambush 28
B/R Ruby 1224

CED		BW	WW	YW	MILK		
+10		+1	+72	+123	+17		
CWT	MARB	RE	FAT	\$M	\$W	\$B	\$C
+49	+1.32	+66	+0.020	+80	+70	+164	+293

■ Ultrasounded on 2-10-2020, 60 days safe to MOGCK Entice, due 9-18-2020.

A calving-ease and Marb. female from the foundation 44 Farms Ruby family. Check out the Rubies on both sides, especially 1224 – Great One!

43A BP Common Sense I519

Birth Date: 9-16-2019 Bull 19602335 Tattoo: I519

+*VAR Index 3282 #*GAR Ingenuity
44 Common Sense 6160 +*Sandpoint Blackbird 8809
*18425958 44 Erica Z517 #*Werner War Party 2417
44 Erica 036Y

+*44 Bragging Rights 4372 #*VAR Discovery 2240
44 Ruby 7481 +*44 Ruby 2357
*18875579 +*44 Ruby 5794 #*VAR Discovery 2240
+*44 Ruby X110

CED		BW		WW		YW		MILK	
+9		+2		+67		+121		+25	
CWT	MARB	RE	FAT	\$M	\$W	\$B	\$C		
+49	+1.18	+74	+010	+67	+69	+172	+290		

■ Genomic EPDs are in progress and will be available sale day.



KB-Full Measure C40 – AI Service Sire of Lots 44 and 45



Whitestone 18-Million – Sire of Lot 45A



GAR Quantum – AI Service Sire of Lot 46

44 EXAR Blackcap 5248 [OSF]

Birth Date: 3-5-2015 Cow *18087980 Tattoo: 5248

Sitz Top Game 561X #16559105
#GDAR Game Day 449
#Sitz Pride 88T
#Boyd New Day 8005
#GDAR Miss Wix 474
#*Connealy Onward
Sitz Pride 46P



EXAR Blackcap 2175 *17185897
#*EXAR Upshot 0562B
#Sitz Upward 307R
#*EXAR Barbara T020
#CRA Bextor 872 5205 608
#*GAR New Design 1200

CED		BW		WW		YW		MILK	
+4		+3.0		+52		+89		+29	
CWT	MARB	RE	FAT	\$M	\$W	\$B	\$C		
+33	+90	+70	+016	+72	+58	+132	+243		

■ Ultrasounded on 2-10-2020, 60 days safe to KB-Full Measure C40, due 9-18-2020.

A daughter of the proven RE sire, Top Game 561X, and descending from the \$320,000 valued genomic leader, New Design 1200.

44A BP Index I299

Birth Date: 9-5-2019 Bull 19590054 Tattoo: I299

44 Index 7406 *18913998
+*VAR Index 3282
#*GAR Ingenuity
+*Sandpoint Blackbird 8809
#BHR Marjorie 310 560
+*VAR Discovery 2240
#BHR Marjorie 4640 310

EXAR Blackcap 5248 *18087980
#*Sitz Top Game 561X
#*EXAR Blackcap 2175
#GDAR Game Day 449
#Sitz Pride 88T
#*EXAR Upshot 0562B
+*EXAR Blackcap 0203

CED		BW		WW		YW		MILK	
+4		+3.0		+65		+115		+24	
CWT	MARB	RE	FAT	\$M	\$W	\$B	\$C		
+49	+ .85	+ .89	- .002	+54	+60	+163	+265		

■ Genomic EPDs are in progress and will be available sale day.

45 Cherry Crk Bluebird Lass D252

Birth Date: 9-1-2016 Cow 18866227 Tattoo: D252

Sitz Top Game 561X #16559105
#GDAR Game Day 449
#Sitz Pride 88T
#Boyd New Day 8005
#GDAR Miss Wix 474
#*Connealy Onward
Sitz Pride 46P



Cherry Crk BluebirdLass 244M 17581129
#*TC Vance 011
Ms CC BluebirdLass 4554 0120
#Connealy Right Answer 746
+*TC Pride 8056
+Cherry Crk Onward 8633
CCR Bluebird Lass 1562 4554

CED		BW		WW		YW		MILK	
+9		+1.2		+67		+113		+34	
CWT	MARB	RE		FAT		\$M		\$B	
+47	+45	+78		+014		+73		+84	
								+121	
								+230	

■ Ultrasounded on 2-10-2020, 60 days safe to KB-Full Measure C40, due 9-18-2020.

Another daughter of the Express Ranches and Sitz Angus RE leader, Top Game 561X.

45A Belle Bluebird Lass I319

Birth Date: 9-9-2019 Cow 19597852 Tattoo: I319

Whitestone 18-Million *18000000
#Jindra Acclaim
Whitestone Everelda 5109
#Jindra 3rd Dimension
+Jindra Blackbird Lass 1111
#*Connealy Black Granite
Whitestone Everelda C059

Cherry Crk BluebirdLass D252 18866227
#*Sitz Top Game 561X
Cherry Crk BluebirdLass 244M
#GDAR Game Day 449
#Sitz Pride 88T
#*TC Vance 011
Ms CC BluebirdLass 4554 0120

CED		BW		WW		YW		MILK	
+3		+3.4		+80		+141		+33	
CWT	MARB	RE	FAT	\$M	\$W	\$B	\$C		
+63	+40	+85	-.020	+52	+80	+170	+272		

■ Genomic EPDs are in progress and will be available sale day.

46 DCF Lady 6777

Birth Date: 10-2-2016 Cow *18624922 Tattoo: 6777

EXAR Ten X 3281B *17482989
#*AAR Ten X 7008 SA
+EXAR Royal Lass 0431
#*Mytty In Focus
#AAR Lady Kelton 5551
#*EXAR Spartan 6225
BR Royal Lass 7036-19



DCF Lady 4707 18162505
+Consensus of DCF 1670
+HCC 4200 Lady 911
#*Connealy Consensus 7229
WK Miss Rowena 2423
#SAV Net Worth 4200
+E&B Lady Precision 310

CED		BW		WW		YW		MILK	
+14		-1		+56		+107		+33	
CWT	MARB	RE	FAT	\$M	\$W	\$B	\$C		
+44	+73	+43	+011	+43	+70	+153	+241		

■ Ultrasounded on 2-10-2020, 60 days safe to G A R Quantum, due 9-18-2020.

A low-birth female who blends the cornerstone female sires, Ten X and Consensus.

46A BP Index H39

Birth Date: 8-22-2019 Bull 19590039 Tattoo: H39

44 Index 7406 *18913998
+*VAR Index 3282
#*GAR Ingenuity
+*Sandpoint Blackbird 8809
#BHR Marjorie 310 560
+*VAR Discovery 2240
#BHR Marjorie 4640 310

DCF Lady 6777 *18624922
#*AAR Ten X 7008 SA
+EXAR Royal Lass 0431
+Consensus of DCF 1670
+HCC 4200 Lady 911

CED		BW		WW		YW		MILK	
+10		+1.0		+67		+122		+26	
CWT	MARB	RE	FAT	\$M	\$W	\$B	\$C		
+55	+76	+76	-0.04	+40	+70	+171	+262		

■ Genomic EPDs are in progress and will be available sale day.



EXAR Guru 8719B – AI Service Sire of Lot 47

47 Belle Georgina K47

Birth Date: 11-5-2017 Cow +*19365092 Tattoo: K47

SAV Sensation 5615
+*18258149
#*SAV Registry 2831
+Rito 707 of Ideal 3407 7075
SAV Madame Pride 0075
#SAV 8180 Traveler 004
#*SAV May 2397

ANGUS

Champion Hill Georgina 8308
+*17408370
#*SAV Brave 8320
#*SAV Mandan 5664
#*SAV May 2397
#*SAV Bismarck 5682
+Champion Hill Georgina 1949

CED		BW		WW		YW		MILK	
+1		+2.0		+44		+84		+21	
CWT	MARB	RE	FAT	\$M	\$W	\$B	\$C		
+32	+10	+40	+018	+34	+35	+100	+164		

■ Ultrasounded on 2-10-2020, 60 days safe to EXAR Guru 8719B, due 9-18-2020.

A feature from the consistently winning show heifer Georgina family made famous and competitive in Paul Hill's Champion Hill program.

47A Belle Georgina I159

Birth Date: 9-7-2019 Cow 19599437 Tattoo: I159

SAV Raindance 6848
+*18578965
#*Coleman Charlo 0256
#*OCC Paxton 730P
+Bohi Abigale 6014
#SAV 8180 Traveler 004
#*SAV May 2397

Belle Georgina K47
+*19365092
+*SAV Sensation 5615
+*Champion Hill Georgina 8308
#*SAV Registry 2831
#*SAV Blackcap May 4136
#*SAV Brave 8320
+Champion Hill Georgina 7225

CED		BW		WW		YW		MILK	
+3		+2.0		+55		+105		+23	
CWT	MARB	RE	FAT	\$M	\$W	\$B	\$C		
+39	+05	+68	+004	+49	+48	+117	+201		

■ Genomic EPDs are in progress and will be available sale day.

Here's a brainteaser for you, Mary Ann. When is a Cow not a Cow?

(Hint: Lots 48 and 49 are with this group)
ONLY because they are Fall Calvers with
AI Sired Calves and Safe to AI Sires!

48 F O F Blackcap 706I

Birth Date: 9-1-2017 Cow 18976372 Tattoo: 706I

SydGen Blacksmith 4010
*17871732
#*SydGen June 1239
#B/R Ambush 28
2 Bar 5050 New Design 8050
#SydGen Contract 9410
+SydGen June 7600



DCF Blackcap 1728
+17183416
#*SydGen CC&7
+LS Precision 1680 2104 P200

CED		BW		WW		YW		MILK	
CWT	MARB	RE	FAT	\$M	\$W	\$B	\$C		
+59	+65	+87	-028	+66	+56	+192	+315		

■ Offered by Fair Oaks Farm, Van Buren, AR
First Calf Heifer! AI bred on 12-16-2019 to EWA Peyton 642,
ultrasounded safe. Due 9-24-2020. (See Peyton on page 29.)

Calving-ease female who stems from the \$250,000 Limestone donor,
EXT 2104, dam of the \$8.5 million producer, Precision 2536.

48A F O F Blacksmith 922J

Birth Date: 10-4-2019 Bull *19664616 Tattoo: 922J

SydGen Blacksmith 4010
*17871732
#*SydGen June 1239
#B/R Ambush 28
2 Bar 5050 New Design 8050
#SydGen Contract 9410
+SydGen June 7600



FOF Blackcap 706I
18976372
+SydGen Blacksmith 4010
+2 Bar Deaf Smith
#*SydGen June 1239
#*SydGen CC&7
+LS Precision 1680 2104 P200

CED		BW		WW		YW		MILK	
+16		-1.8		+61		+122		+28	
CWT	MARB	RE	FAT	\$M	\$W	\$B	\$C		
+73	+ 90	+1 05	- 014	+43	+64	+226	+336		

■ Offered by Fair Oaks Farm, Van Buren, AR

49 F O F Queen 713I (DDF)

Birth Date: 9-13-2017 Cow 18976375 Tattoo: 713I

SydGen Exceed 3223
*17501893
+*SydGen Googol
+*SydGen Forever Lady 1255
DAAR Infinity 313
SydGen Forever Lady 4087
#*SydGen 928 Destination 5420
SydGen Forever Lady 8114



FOF Queen 026J
16895881
#*GAR Predestined
FOF Queen 436J
#B/R New Design 036
#*GAR Ext 4206
#Hyline Right Time 338
Fames Queen 9221

CED		BW		WW		YW		MILK	
+1		+1.9		+40		+73		+26	
CWT	MARB	RE	FAT	\$M	\$W	\$B	\$C		
+31	+1.43	+58	+009	+73	+45	+163	+284		

■ Offered by Fair Oaks Farm, Van Buren, AR
First Calf Heifer! AI bred on 12-16-2019 to SydGen KCF Gavel,
ultrasounded safe. Due 9-24-2020. (See Gavel on page 29.)

A big Marbling female who combines the foundation Marb. leaders,
Exceed and Predestined.

49A F O F Inertia 901H

Birth Date: 8-22-2019 Bull *19663571 Tattoo: 901H

GAR Inertia
*18636043
+*GAR Momentum
+*GAR Prophet 2984
#*GAR Progress
+GAR Big Eye 1770
#*GAR Prophet
+GAR Daybreak 1521



FOF Queen 713I
18976375
+SydGen Exceed 3223
FOF Queen 026J
+*SydGen Googol
+*SydGen Forever Lady 1255
#*GAR Predestined
FOF Queen 436J

CED		BW		WW		YW		MILK	
+6		+1.0		+63		+114		+35	
CWT	MARB	RE	FAT	\$M	\$W	\$B	\$C		
+51	+1.27	+58	+0.035	+76	+78	+186	+317		

■ Offered by Fair Oaks Farm, Van Buren, AR

When She's A First Calf Heifer! (Hey, that's no joke.)

Sort Young Cows from Mature Cows

Excerpted from
"Beef Cattle Manual"
Seventh Edition, 2015
Oklahoma State University
Extension

First calf heifers have historically been the toughest females on the ranch to get rebred. They are being asked to continue to grow, produce milk, repair the reproductive tract and have enough stored body energy (fat) to return to heat cycles in a short time frame. Two-year-old cows must fill all of these energy demands at a time when their mouth is going through the transition from baby teeth to adult teeth. If these young cows are pastured with larger, older cows in the herd, they very likely will be pushed aside when the supplements are being fed in the bunk or on the ground. The result of these adverse conditions for young cows very often is a lack of feed intake and lowered body condition. Of course, lowered body condition results in delayed return to heat cycles and a later and smaller calf crop the following year.

Lots 50 – 55

6 Spring Calvers by Weigh Up,
Generation 2100 and
Woodside (on the next page)

*With progressive
2020 calves at side!*



GAR Inertia
Sire of Lots 49A, 50A and 53A



Whitestone 18-Million
Sire of Lot 51A



Deer Valley Growth Fund
Sire of Lot 52A



44 Strike Force 6003
Sire of Lots 53A, 54A and 55A

*Bona Fide
Herd
Builders*



Plattemere Weigh Up K360 – Sire of Lots 50 and 51

2 WEIGH UP DAUGHTERS

50 DF Andi 4502

Birth Date: 1-1-2014	Cow 17890031	Tattoo: 4502
#Sitz Upward 307R	#*Connealy Onward	
Plattemere Weigh Up K360	Sitz Henrietta Pride 81M	
#*16692552	#GAR Retail Product	
	Barbara of Plattemere 337	
	#*HSAF Bando 1961	
DF Andi 1510	CJ Blackbird 11P	
#17067349	#Exar Lutton 1831	
	EXAR Andi 2775	
	+CJ Prestige 25T	
	+DF Andi 8301	

CED		BW		WW		YW		MILK	
+7		+1.2		+64		+111		+23	
CWT	MARB	RE	FAT	\$M	\$W	\$B	\$C		
+51	+29	+42	-.012	+47	+66	+144	+234		

■ Offered by Little Cedar Cattle Co., Beaverton, MI
50A, 202, Heifer, 19653840, 1/26/20, sired by GAR Inertia.

51 Thomas Erica 5897

Birth Date: 9-11-2015	Cow *18368323	Tattoo: 5897
#Sitz Upward 307R	#*Connealy Onward	
Plattemere Weigh Up K360	Sitz Henrietta Pride 81M	
#*16692552	#GAR Retail Product	
	Barbara of Plattemere 337	
	#SAV Net Worth 4200	
Thomas Erica 9855	#SAV 8180 Traveler 004	
#*16614585	+SAV May 2410	
	#*GAR Grid Maker	
	+Thomas Erica 1839	
	Thomas Erica 51039	

CED		BW		WW		YW		MILK	
+2		+2.6		+74		+131		+29	
CWT	MARB	RE	FAT	\$M	\$W	\$B	\$C		
+58	+76	+55	-.018	+40	+78	+157	+244		

■ 51A, A270, Heifer, 19672725, 1/16/20, sired by Whitestone 18-Million



VAR Generation 2100 – Sire of Lots 52 and 53

2 GENERATION 2100 DAUGHTERS

52 SydGen Rita 7644

Birth Date: 9-8-2017	Cow +*19116053	Tattoo: 7644
#*Connealy Consensus 7229	#*Connealy Consensus	
VAR Generation 2100	Blue Lilly of Conanga 16	
*17171587	#*Connealy Onward	
	+*Sandpoint Blackbird 8809	
	+*SydGen FATE 2800	
SydGen Rita 4387	+SydGen Heroine 9808	
+*18123211	#*Hoover Dam	
	+EXAR Rita 1885	
	+Riverbend Rita S136	

CED		BW		WW		YW		MILK	
+8		+1.1		+65		+106		+22	
CWT	MARB	RE	FAT	\$M	\$W	\$B	\$C		
+52	+42	+1.02	-0.06	+67	+69	+146	+256		

■ 52A, A500, Heifer, 19677348, 1/27/20, sired by Deer Valley Growth Fund

53 Baldco Everelda Entense 1616

Birth Date: 3-11-2016	Cow +18565555	Tattoo: 1616
#*Connealy Consensus 7229	#*Connealy Consensus	
VAR Generation 2100	Blue Lilly of Conanga 16	
*17171587	#*Connealy Onward	
	+*Sandpoint Blackbird 8809	
	#SAV 8180 Traveler 004	
Falcon Everelda Entense 315S	+SAV May 2410	
+15407657	#*GAR Grid Maker	
	+Sitz Everelda Entense 023	
	#Sitz Traveler 8180	
	+Boyd Forever Lady 8003	
	+Traveler 124 GDAR	
	Sitz Everelda Entense 1137	

CED		BW		WW		YW		MILK	
+0		+4.3		+77		+144		+30	
CWT	MARB	RE	FAT	\$M	\$W	\$B	\$C		
+67	+37	+86	+007	+53	+70	+161	+262		

■ 53A, B120, Bull, 19667460, 2/7/20, sired by 44 Strike Force 6003



Woodside – Sire of Lots 54 and 55

2 WOODSIDE DAUGHTERS

54 F O F Special Lady 5171 [OSF]

Birth Date: 9-17-2015 Cow 18413289 Tattoo: 5171

Woodside
+*17862852

#*Connealy Consensus 7229
+*Rita 5F56 of 1198 FD

#*Connealy Consensus
Blue Lilly of Conanga 16
#CA Future Direction 5321
+*Rita 1198 of 2536 Rito 616



#Connealy Lead On
Fof Queen Lead On 4261
14984839

#Connealy Leadtime
Eligence Plus of Conanga
#Scotch Cap
DF Queen 7095

CED		BW	WW	YW	MILK		
-1		+2.5	+45	+84	+25		
CWT	MARB	RE	FAT	\$M	\$W	\$B	\$C
+40	+90	+74	-024	+34	+41	+160	+242

■ 54A, A002, Heifer, 19661151, 1/23/20, sired by 44 Strike Force 6003

55 F O F Blackcap 6161

Birth Date: 9-7-2016 Cow 18721426 Tattoo: 6161

Woodside
+*17862852

#*Connealy Consensus 7229
+*Rita 5F56 of 1198 FD

#*Connealy Consensus
Blue Lilly of Conanga 16
#CA Future Direction 5321
+*Rita 1198 of 2536 Rito 616



#SydGen CC&7
DCF Blackcap 1728
+17183416

#SAF Connection
SydGen Forever Lady 4087
#GAR Precision 1680
+GAR Ext 2104

CED		BW		WW		YW		MILK	
+5		+1.9		+54		+97		+26	
CWT	MARB	RE	FAT	\$M	\$W	\$B	\$C		
+50	+67	+77	+010	+32	+55	+173	+256		

■ 55A, A001, Bull, 19661152, 1/20/20, sired by 44 Strike Force 6003



CoX 09B9 Ideal 5101 – Lot 56



EXAR Denver 2002B – Sire of Lot 56



44 Strike Force 6003 – Sire of Lot 56A and Service Sire

*Do you see
the "idea"
in 5101?*

When you see
her big October
bull calf with the
Strike Force LOOK,
you'll get the IDEA
why we bred her
back the SAME WAY!

**Ideal 5101 stems from one of
the top producing families to work
in the Callaway and Cox programs,
and the foundation makers in the
historic Jorgenson Farms program.**

This balanced-trait daughter of the record-selling
Express Ranches sire, Denver, stems from a dam who
combines the foundation female sires Objective and
Predestined with the cornerstone Pathfinder, Ideal 0745.

56 CoX 09B9 Ideal 5101 [OSF]

Birth Date: 3-14-2015 Cow +*18176892 Tattoo: 5101

EXAR Denver 2002B
#*17160560

#*EXAR Upshot 0562B
+Exar Royal Lass 1067

#Sitz Upward 307R
#EXAR Barbara T020
#EXAR 263C
BR Royal Lass 19-132



#SS Objective T510 0T26
CoX Ideal 1031 09B9
+*16867204

*Callaways Ideal 1031

#SS Traveler 6807 T510
SS Miss Rita R011 7R8
#*GAR Predestined
#Callaways Ideal 0745

CED		BW	WW	YW	MILK		
+11		+2.5	+66	+117	+21		
CWT	MARB	RE	FAT	\$M	\$W	\$B	\$C
+43	+62	+73	+008	+54	+61	+136	+230

■ 56A, J229, Bull, 19590083, 10/17/19, sired by 44 Strike Force 6003
Ultrasounded safe to 44 Strike Force 6003 on 2-10-2020, due approx.
10-18-20. Exposed to Strike Force through 3-26-20.

ORIGen on EXAR Denver 2002B:

*"Daughters of Denver include the \$80,000 top-selling
fall pair of the 2018 Big Event at Express, and the dams of
top-selling bulls and females in the Angus breed,
including \$160,000 half-interest top-selling bred heifer
of the 2018 Big Event at Express, and the \$85,000 and
\$70,000 featured fall yearling females..."*



Deer Valley Growth Fund



44 Handshake 7278



44 Rubicon River 7110



Woodside

Lots 57 – 65 *9* Fall Calvers safe in calf to Strike Force

More good ideas!

57 Woodside Rita 5570 of 5F56

Birth Date: 9-27-2015 Cow +*18455132 Tattoo: 5570

Connealy Black Granite
#*17028963
#Eura Elga of Conanga 9109
#*Connealy Consensus 7229
#*Connealy Consensus Blue Lilly of Conanga 16
#*SAV Bismarck 5682
Eura Cal of Conanga 56B

ANGUS

Rita 5F56 of 1198 FD
+*15142168
#CA Future Direction 5321
+*Rita 1198 of 2536 Rito 616
#GAR Precision 1680
CA Miss Power Fix 308
#Rito 616 of 4B20 6807
GAR Precision 2536

CED		BW		WW		YW		MILK	
+10		+4		+57		+91		+25	
CWT	MARB	RE	FAT	\$M	\$W	\$B	\$C		
+34	+54	+52	+043	+51	+68	+130	+220		

■ 57A, K89, Bull, 19596608, 11/9/19, sired by Deer Valley Growth Fund
Ultrasounded safe to 44 Strike Force 6003 on 2-10-2020, due approx.
10-18-20. Exposed to Strike Force through 3-26-20.

58 Craft Lady 1503-713 [OHF]

Birth Date: 1-30-2017 Cow 18811718 Tattoo: 713

Basin Payweight 1682
#*17038724
21AR O Lass 7017
#*Basin Payweight 006S
#Vermilion Payweight J847
+Basin Lucy 3829
#HARB Pendleton 765 JH
21AR O Lass F24A

GGPLD

Craft Lady 5105-1503
+18306020
#EXAR Denver 2002B
#*EXAR Upshot 0562B
+Exar Royal Lass 1067
#Connealy Danny Boy
Vermilion Lady 3544

CED		BW	WW	YW	MILK		
+4		+2.6	+69	+112	+23		
CWT	MARB	RE	FAT	\$M	\$W	\$B	\$C
+50	+95	+62	+021	+74	+70	+164	+287

■ 58A, K209, Heifer, 19590110, 11/18/18, sired by 44 Handshake 7278
Ultrasounded safe to 44 Strike Force 6003 on 2-10-2020, due approx.
10-18-20. Exposed to Strike Force through 3-26-20.

59 3F Isabel 799

Birth Date: 1-28-2017 Cow +*19172965 Tattoo: 799

AAR Ten X 7008 SA
#*15719841
#AAR Lady Kelton 5551
#*Mytty In Focus
#SAF Focus of ER
Mytty Countess 906
SAV Adaptor 2213
+HSAF Lady Kelton 504B

HCSOK

VNAR Isabel 8165
+16206987
#*Connealy All Around
+Eagle 1407 Isabel 2213
#Connealy Whitman
Entrust of Conanga 894
#Bon View New Design 1407
LB 6807 Isabel 339

CED		BW		WW		YW		MILK	
+7		+1.3		+77		+130		+18	
CWT	MARB	RE	FAT	\$M	\$W	\$B	\$C		
+48	+1.02	+58	-014	+53	+72	+159	+259		

■ 59A, J349, Heifer, 19590094, 10/28/19, sired by 3F Index 7975
Ultrasounded safe to 44 Strike Force 6003 on 2-10-2020, due approx.
10-18-20. Exposed to Strike Force through 3-26-20.

60 QVS/LAF Barbara 2176

Birth Date: 9-6-2016 Cow +*18710350 Tattoo: 2176

SAV Brilliance 8077
#*16107774
SAV Blackcap May 5270
#*SAV Bismarck 5682
#*GAR Grid Maker
SAV Abigale 0451
#SAV 8180 Traveler 004
#*SAV May 2420

HCSOK

QVS Barbara 0002
+*16873739
#*HSAF Bando 1961
DDA Barbara 0411
#SAF 598 Bando 5175
+JKS Miss Cheyenne 196
#Summitcrest High Prime 0H29
WCC Barbara M84

CED		BW	WW		YW	MILK	
+6		+9	+51		+94	+34	
CWT	MARB	RE	FAT	\$M	\$W	\$B	\$C
+36	+39	+29	+010	+55	+66	+112	+200

■ 60A, J289, Heifer, 19590088, 10/23/19, sired by 44 Index 7406
Ultrasounded safe to 44 Strike Force 6003 on 2-10-2020, due approx.
9-18-20. Exposed to Strike Force through 3-26-20.

61 Belle Lucy I27

Birth Date: 9-3-2017 Cow *19063020 Tattoo: I27

EF Commando 1366
*17082311
Riverbend Young Lucy W1470
#*EF Complement 8088
#Basin Franchise P142
+EF Everelda Entense 6117
#*B/R Ambush 28
+Riverbend Young Lucy T1080

ANGUS

Thomas Lucy 5936
*18362917
*Thomas Earnan 3984
*Thomas Lucy 3706
#*Connealy Earnan 076E
#*Thomas Lucy 41005
#*Baldridge Waylon W34
Thomas Lucy 5375

CED		BW		WW		YW		MILK	
+5		+1.9		+72		+130		+30	
CWT	MARB	RE	FAT	\$M	\$W	\$B	\$C		
+49	+69	+74	-021	+52	+77	+151	+248		

■ 61A, J219, Bull, 19590082, 10/14/19, sired by 44 Rubicon River 7110
Ultrasounded safe to 44 Strike Force 6003 on 2-10-2020, due approx.
10-18-20. Exposed to Strike Force through 3-26-20.

62 Belle Phyllis J576

Birth Date: 10-31-2016 Cow 19225149 Tattoo: J576

44 Prime Target 0233
+16958199
+BluQ Jilt 8125
#*Werner War Party 2417
#*Connealy Onward
+BAAR USA Lady Jaye 489
#*Rito 112 of 2536 Rito 616
+Exar Jilt 4046

ANGUS

Lady Phyllis I182
+17611814
#*SAV Iron Mountain 8066
+Champion Hill Phyllis 7159
#TC Gridiron 258
SAV Madame Pride 3249
#SAV Net Worth 4200
+Champion Hill Phyllis 4989

CED		BW		WW		YW		MILK	
+3		+3.6		+54		+99		+29	
CWT	MARB	RE	FAT	\$M	\$W	\$B	\$C		
+46	+42	+09	+035	+40	+53	+123	+200		

■ 62A, K169, Bull, 19590106, 11/15/19, sired by 44 Strike Force 6003
Ultrasounded safe to 44 Strike Force 6003 on 2-10-2020, due approx.
10-18-20. Exposed to Strike Force through 3-26-20.



VAR Blackcap 3180 – Dam of Lot 63



44 Lucy 1297 – Dam of Lot 64



PF W34 Lucy 4600 – Maternal Sister to Lot 65

63 Vintage Blackcap 6286

Birth Date: 3-8-2016 Cow +*18417039 Tattoo: 6286

VAR Foreman 3339
+*17607585
HCSOK
VAR Blackcap 3180
+*17482717

#*AAR Ten X 7008 SA
+*Sandpoint Blackbird 8809

#*Mytty In Focus
#AAR Lady Kelton 5551
#*Connealy Onward
+Riverbend Blackbird 4301

#*Connealy Consensus 7229
+*EXAR New Design 4212

#*Connealy Consensus
Blue Lilly of Conanga 16
+*Rito 112 of 2536 Rito 616
+*GAR New Design 1200

CED		BW	WW	YW	MILK		
+10		+6	+74	+135	+20		
CWT	MARB	RE	FAT	SM	SW	SB	SC
+46	+99	+66	-.011	+58	+74	+158	+263

■ 63A, K219, Bull, 19667458, 11/4/19, sired by 44 Index 7406
Ultrasounded safe to 44 Strike Force 6003 on 2-10-2020,
due approx. 9-18-20. Exposed to Strike Force through 3-26-20.

64 DCF Lucy 5544 [OSF]

Birth Date: 1-9-2015 Cow +*18099299 Tattoo: 5544

VAR Generation 2100
*17171587
HCSOK
44 Lucy 1297
+*16958215

#*Connealy Consensus 7229
+*Sandpoint Blackbird 8809

#*Connealy Consensus
Blue Lilly of Conanga 16
#*Connealy Onward
+Riverbend Blackbird 4301

#*Hoover Dam
+Basin Lucy 3829

#*SydGen CC&7
#Erica of Ellston C124
#CA Future Direction 5321
Basin Lucy 178E

CED		BW		WW		YW		MILK	
+5		+2.4		+54		+101		+23	
CWT	MARB	RE	FAT	\$M	\$W	\$B	SC		
+40	+51	+67	+009	+60	+51	+149	+253		

■ 64A, K139, Bull, 19590103, 11/14/19, sired by 44 Index 7406
Ultrasounded safe to 44 Strike Force 6003 on 2-10-2020,
due approx. 10-18-20. Exposed to Strike Force through 3-26-20.

65 PF Lucy 5648

Birth Date: 12-5-2015 Cow +*18345778 Tattoo: 5648

VAR Generation 2100
*17171587
HCSOK
EXAR Lucy 5179
+*16395510

#*Connealy Consensus 7229
+*Sandpoint Blackbird 8809

#*Connealy Consensus
Blue Lilly of Conanga 16
#*Connealy Onward
+Riverbend Blackbird 4301

#+SAV Bismarck 5682
+Basin Lucy 3829

#*GAR Grid Maker
SAV Abigale 0451
#CA Future Direction 5321
Basin Lucy 178E

CED		BW		WW		YW		MILK	
+5		+2.5		+53		+90		+27	
CWT	MARB	RE	FAT	SM	SW	SB	SC		
+25	+55	+73	-002	+55	+56	+130	+224		

■ 65A, J269, Bull, 19590087, 10/20/19, sired by Woodside
Ultrasounded safe to 44 Strike Force 6003 on 2-10-2020,
due approx. 10-18-20. Exposed to Strike Force through 3-26-20.

Fast Pay Makes Fast Friends

**St. Louis
Business
Journal**

By Mark Vittert, published in 1981
First reprinted in the
1989 Belle Point catalog

The stakes of the poker game were getting pretty high. There was more than \$100 in the pot and unfortunately my cards were pretty good. I had to play the hand out. It was 3 a.m. and we'd been at the table for seven hours. I kept meeting the raises, the pot kept growing and all I remember is that the Captain's cards beat mine—flush over straight.

That hand ended the game and we all settled up. Except me. I owed the Captain \$400 and, never thinking of losing that much, I didn't have it with me. I told the Captain that I'd send him a check. He said fine but he also added: "Mark, just remember that fast pay makes fast friends."

We've all heard different versions of the old joke, "the three biggest lies." The joke always begins with the first lie being, "the check is in the mail." There is something special about someone who always follows through on what he promises. Not just that they actually do what they say but rather that they do it when they say they will and that it's done with class.

How many people in business do you know that you confidently could count to follow through on time? The lawyer says the papers will be done on Wednesday. Your big customer says that headquarters wants your payment held up for just another week. The head of personnel says he'll call you on Tuesday about the new job. Well, we all know those who do just what they say are rare indeed. It's so rare, that whenever people do follow through on time I'm really pleasantly surprised and appreciative. Even if the news is bad, I feel positive toward the caller if it was done on time. Stringing people out is a bad habit. Generally, people who reach the top have learned to follow through quickly. As Tom Curtis once told me: "A congressman learns to make as few commitments as possible but when a promise is made, then you must follow through at all costs and promptly."

The place most people fall down is in the category of money. I've found that if you pay quickly, most other obligations will appear to be easily met. "Fast pay" will make you feel better. After you write the check you can forget about the debt. And "fast pay" also keeps the other person from spending those waiting days thinking about your faults. Also, you become the kind of person people want to work with again.

I called the Captain on a Wednesday in February and asked if he would like to invest \$100,000 to \$150,000 in a project I was putting together. He said: "Yeah, it sounds good. I'll put the check in the mail right now. Got to go now. Thanks." Two days later on Friday, I received this crumpled little note in the mail. "Mark: Enclosed is check for \$100 grand. I'll play you bumper pool for the other 50 grand. Good luck, Captain." I suppose this is an example of a man who practices what he believes in.

Lots 66 – 69

4 Fall Calvers safe in calf to Index 7406

*Good Cows
Good
Deals!*



Ankony Primrose 0054 – Lot 66



Deer Valley Henrietta 5239 – Full sister to Lot 68
A featured female of the Montana Ranch cow herd



44 Index 7406 – Service Sire of Lots 66 through 69



Basin Payweight 1682 – Sire of Lot 67

66 Ankony Primrose 0054 [DDF]

Birth Date: 3-5-2014 Cow +*17874559 Tattoo: 0054
#*GAR Predestined #B/R New Design 036
#*GAR Ext 4206
#*SS Objective T510 OT26
+GAR 1407 New Design 2413



#DHD Traveler 6807 #QAS Traveler 23-4
#Bemindful Maid DHD 0807
#Emulation N Bar 5522
N Bar Primrose 2424

CED		BW		WW		YW		MILK	
+8		+1.3		+49		+94		+31	
CWT	MARB	RE	FAT	\$M	\$W	\$B	\$C		
+28	+1.08	+19	+0.07	+29	+55	+140	+211		

■ 66A, 1409, Bull, 19598064, 9/12/19, sired by G A R Inertia
Ultrasounded safe to 44 Index 7406 on 2-10-2020, due approx.
10-18-20. Exposed to 44 Index through 3-26-20.

67 Thomas Miss Liberty 7247

Birth Date: 1-30-2017 Cow *18944326 Tattoo: 7247
#*Basin Payweight 006S #Vermilion Payweight J847
+Basin Lucy 3829
#HARB Pendleton 765 JH
21AR O Lass F24A



#*Connealy Confidence 0100 Connealy Tobin
Becka Gala of Conanga 8281
#*Woodhill Foresight
Thomas Miss Liberty 81011
Thomas Miss Liberty 5475

CED		BW		WW		YW		MILK	
+12		-.5		+63		+106		+28	
CWT	MARB	RE	FAT	\$M	\$W	\$B	\$C		
+39	+40	+40	+051	+80	+81	+120	+236		

■ 67A, 1269, Heifer, 19596583, 9/9/19, sired by 44 Rubicon River 7110
Ultrasounded safe to 44 Index 7406 on 2-10-2020, due approx.
10-18-20. Exposed to 44 Index through 3-26-20.

68 PV Henrietta Pride 5809

Birth Date: 10-17-2015 Cow +*18477744 Tattoo: 5809
#*Sitz Top Game 561X #*GDAR Game Day 449
#Sitz Pride 88T
#*SAV 004 Predominant 4438
#BAR S Emulota 5426



#*Connealy Consensus 7229 #*Connealy Consensus
Blue Lilly of Conanga 16
#*Connealy Onward
Sitz Henrietta Pride 81M

CED		BW		WW		YW		MILK	
+10		+1.0		+56		+96		+26	
CWT	MARB	RE	FAT	\$M	\$W	\$B	\$C		
+33	+46	+73	+013	+51	+63	+99	+179		

■ 68A, 1119, Heifer, 19590050, 9/7/19, sired by 44 Index 7406
Ultrasounded safe to 44 Index 7406 on 2-10-2020, due approx.
10-18-20. Exposed to 44 Index through 3-26-20.

69 Belle Rita B327

Birth Date: 2-11-2017 Cow 19225142 Tattoo: B327
#*Baldridge Waylon W34 #*GAR-EGL Protege
#Baldridge Blackcap T163
#Vermilion Payweight J847
+Basin Lucy 7333



#*GAR New Design 5050 #B/R New Design 036
GAR Precision 706
#*SS Objective T510 OT26
Rita 6M18 of Rita 4N30 Pred

CED		BW		WW		YW		MILK	
+7		+1.5		+55		+101		+32	
CWT	MARB	RE	FAT	\$M	\$W	\$B	\$C		
+140	+1.01	+1.60	+0.16	+45	+61	+165	+259		

■ 69A, 1479, Heifer, 19590058, 9/15/19, sired by 44 Rubicon River 7110
Ultrasounded safe to 44 Index 7406 on 2-10-2020, due approx.
10-18-20. Exposed to 44 Index through 3-26-20.

ORigen on Basin Payweight 1682:

*"Payweight 1682 daughters in production
display his depth of body and ease of fleshing
with nice udder structure and a brood cow look."*

MONEYMAKERS

The kind we've always been known for!

STUDY Miss Rowena. Let your IMAGINATION lead you on the pathway to OPPORTUNITY. BE like Mike: DETERMINED!

70 MGR Rita 6060

Birth Date: 12-4-2016 Cow +18786190 Tattoo: 6060

VAR Discovery 2240
#*17262835
GGPLD
#*AAR Ten X 7008 SA
+*Deer Valley Rita 0308
#*Mytty In Focus
#AAR Lady Kelton 5551
#Sitz Upward 307R
*GAR Objective 2345

Deer Valley Rita 8343
+16070141
#*Rito 112 of 2536 Rito 616
+GAR Ext 614
#Rito 616 of 4B20 6807
GAR Precision 2536
#*N Bar Emulation EXT
+GAR Scotch Cap 309

CED		BW		WW		YW		MILK	
-2		+3.7		+71		+121		+20	
CWT	MARB	RE	FAT	\$M	\$W	\$B	\$C		
+54	+69	+59	-.012	+57	+64	+138	+236		

■ 70A, K129, Heifer, 19598044, 11/12/19, sired by G A R Inertia
Pasture exposed to 44 Strike Force 6003 from 1-2-2020 to sale day.
See update for pregnancy check results.

Selected from the Rutherford Dispersal



MGR Rita 6060 – Lot 70

71 Thomas Erica 5528

Birth Date: 6-29-2015 Cow *18368245 Tattoo: 5528

GAR Prophet
#*16295688
#CRA Bextor 872 5205 608
+GAR Objective 1885
#BAR Ext Traveler 205
Cra Lady Jaye 608 498 S Easy
#*SS Objective T510 OT26
GAR 1407 New Design 2232

ANGUS6S

Thomas Erica 3694
*17734623
#*Baldridge Waylon W34
Thomas Erica 9836
#*GAR-EGL Protege
*Baldridge Blackcap T163
#*GAR Predestined
+Thomas Erica 6431

CED		BW		WW		YW		MILK	
+13		-3		+62		+105		+34	
CWT	MARB	RE	FAT	\$M	\$W	\$B	\$C		
+21	+1.34	+26	+050	+85	+85	+119	+239		

■ 71A, I699, Heifer, 19598050, 9/29/19, sired by 44 Index 7406
Pasture exposed to 44 Strike Force 6003 from 1-2-2020 to sale day.
See update for pregnancy check results.

Check out her Marb #!



GAR Inertia – Sire of Lot 70A

72 OSU Empress 7150

Birth Date: 1-13-2017 Cow *18726178 Tattoo: 7150

Barstow Cash
#*17145326
#*Sitz Dash 10277
Barstow Queen W16
#Sitz Upward 307R
+Sitz Everelda Entense 2665
#*SAV Final Answer 0035
RCA Queen R42

ANGUS6S

OSU Empress 5122
18170650
#*SAV Resource 1441
OSU Empress 6154
+Rito 707 of Ideal 3407 7075
*SAV Blackcap May 4136
#BR Midland
+OSU Empress 3116

CED		BW		WW		YW		MILK	
+9		+.7		+61		+118		+29	
CWT	MARB	RE	FAT	\$M	\$W	\$B	\$C		
+57	+37	+.86	+.014	+45	+67	+140	+227		

■ 72A, J169, Heifer, 19590077, 10/10/19, sired by 44 Rubicon River 7110
Pasture exposed to 44 Strike Force 6003 from 1-2-2020 to sale day.
See update for pregnancy check results.

Stems from the great DF Empress



OSU Empress 5122 – Dam of Lot 72



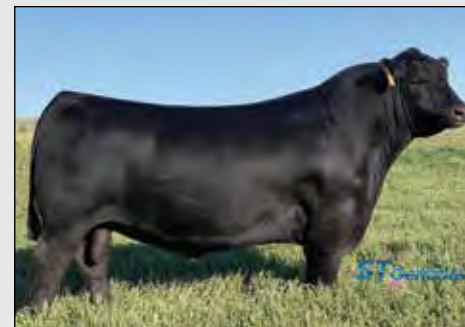
GAR Ashland



Diablo Deluxe 1104



EXAR Monumental 6056B



SAV Raindance 6848

“Nothing is more expensive than a missed Opportunity.”

*H. Jackson Brown, Jr.
Life's Little Instruction Book*

80 T/D Lantz Blackcap 73

Birth Date: 1-8-2017 Cow *18775023 Tattoo: 73

B/R Rito 3216
*17619288
#*Rito 9M25 of Rita 5F56 Pred
+*B/R Ruby 1125
#*GAR Predestined
+*Rita 5F56 of 1198 FD
#B/R Destination 727-928
B/R Ruby 1224



Spring Cove TL Warrior 2058
B/R Lantz Blackcap 475
17803996
#B/R Lantz Blackcap 235
*Varsity V Warrior
+TL Blossom 9138
B/R Magnum 399-712
Arrow One Blackcap 767

CED		BW		WW		YW		MILK	
+6		+6		+54		+93		+30	
CWT	MARB	RE	FAT	\$M	\$W	\$B	\$C		
+39	+85	+69	+015	+50	+64	+142	+234		

■ 80A, J199, Heifer, 19590080, 10/11/19, sired by 44 Strike Force 6003
Pasture exposed to 44 Index 7406 from 1-5-2020 to sale day.
See update for pregnancy check results.

81 Woodside Rita 4120

Birth Date: 5-2-2014 Cow +*18088239 Tattoo: 4120

EXAR Denver 2002B
#*17160560
+EXAR Royal Lass 1067
#Sitz Upward 307R
#EXAR Barbara T020
#EXAR 263C
BR Royal Lass 19-132



Rita 7M68 of 2536 PRED
+*15839077
#*GAR Predestined
GAR Precision 2536
#B/R New Design 036
#*GAR Ext 4206
#GAR Precision 1680
+GAR Ext 2104

CED		BW		WW		YW		MILK	
+5		+3.5		+63		+108		+20	
CWT	MARB	RE	FAT	\$M	\$W	\$B	\$C		
+43	+56	+34	+031	+57	+57	+132	+228		

■ 81A, H89, Bull, 19597961, 8/28/19, sired by G A R Ashland
Pasture exposed to 44 Index 7406 from 1-5-2020 to sale day.
See update for pregnancy check results.

82 Thomas Miss Lucy 5211

Birth Date: 2-3-2015 Cow *18164118 Tattoo: 5211

GAR Prophet
#*16295688
#CRA Bextor 872 5205 608
+GAR Objective 1885
#BAR Ext Traveler 205
Cra Lady Jaye 608 498 S Easy
#*SS Objective T510 OT26
GAR 1407 New Design 2232



Thomas Miss Lucy 2012
*17231635
#*SAV Final Answer 0035
Thomas Miss Lucy 0090
#Sitz Traveler 8180
SAV Emulous 8145
#*Mytty In Focus
Thomas Miss Lucy 8167

CED		BW	WW	YW	MILK		
+11		-.2	+76	+122	+33		
CWT	MARB	RE	FAT	\$M	\$W	\$B	\$C
+39	+1.03	+35	+047	+74	+98	+116	+224

■ 82A, I439, Bull, 19596596, 9/14/19, sired by Diablo Deluxe 1104
Pasture exposed to 44 Index 7406 from 1-5-2020 to sale day.
See update for pregnancy check results.

83 Belle Lucy B227

Birth Date: 2-28-2017 Cow *19395192 Tattoo: B227

Basin Payweight 1682
#*17038724
21AR O Lass 7017
#Vermilion Payweight J847
+Basin Lucy 3829
#HARB Pendleton 765 JH
21AR O Lass F24A



#*EXAR Upshot 0562B
Spruce Mtn Lucy 3733
+*17899650
#Sitz Upward 307R
#*EXAR Barbara T020
#*SAV Bismarck 5682
+Basin Lucy 3829

CED		BW		WW		YW		MILK	
+7		+8		+53		+99		+39	
CWT	MARB	RE	FAT	\$M	\$W	\$B	\$C		
+39	+68	+45	+030	+72	+75	+143	+257		

■ 83A, I149, Bull, 19596445, 9/7/19, sired by EXAR Monumental 6056B
Pasture exposed to 44 Index 7406 from 1-5-2020 to sale day.
See update for pregnancy check results.

84 Champion Hill Blkcp May 8790

Birth Date: 3-3-2015 Cow +*18159714 Tattoo: 8790

SAV Priority 7283
#*15688351
#*SAV Final Answer 0035
#*SAV Blackcap May 5530
#Sitz Traveler 8180
SAV Emulous 8145
#BCC Bushwacker 41-93
SAV May 7238



Champion Hill May 6735
+16180198
#*SAV Mandan 5664
SAV May 7238
#SAV 8180 Traveler 004
SAV Abigale 0451
#*Leachman Right Time
#SAR Prospector May 9124

CED		BW		WW		YW		MILK	
+6		+8		+50		+85		+25	
CWT	MARB	RE	FAT	\$M	\$W	\$B	\$C		
+23	+11	+60	+042	+76	+59	+93	+197		

■ 84A, I399, Heifer, 19599479, 9/11/19, sired by S A V Raindance 6848
Pasture exposed to 44 Index 7406 from 1-5-2020 to sale day.
See update for pregnancy check results.

85 Belle Rita K16

Birth Date: 11-1-2016 Cow *19225150 Tattoo: K16

SydGen FATE 4777
*18000658
#*SydGen FATE 2800
#*BoBo Blackcap 8402
#*SydGen Trust 6228
+SydGen Heroine 9808
#TC Total 410
+*Kahn Blackcap M36



DCF Rita 4698
*18162485
#*AAR Ten X 7008 SA
Bricton Rita 2736
#*Mytty In Focus
#AAR Lady Kelton 5551
#*Summitcrest Complete 1P55
+JLM Rita W300

CED		BW		WW		YW		MILK	
+10		-5		+44		+84		+28	
CWT	MARB	RE	FAT	\$M	\$W	\$B	\$C		
+24	+79	+52	+045	+59	+53	+121	+216		

■ 85A, I179, Bull, 19590052, 9/8/19, sired by 44 Index 7406
Pasture exposed to 44 Index 7406 from 1-5-2020 to sale day.
See update for pregnancy check results.

Come for good cattle, good people, good deals and a really good time!

NEW HOTEL HEADQUARTERS

HOMWOOD SUITES – 479-452-7100

Located east of downtown in the area of Airport/Mercy Hospital
7300 Phoenix Avenue, Fort Smith, Arkansas, 72903

**Call the hotel directly to make a reservation, OR
visit our website to access a link for online reservation.**

Make reservation by March 13 to get the BPR room rate.

SUGGESTED ALTERNATE HOTEL

Hampton Inn, 6201-C Rogers Ave. – 479-452-7000

Located at the Rogers Ave./ I-540 interchange
(Belle Point does not have a room block reserved here.)

A variety of other national chain hotels are located on Phoenix Ave.
in the Airport/Mercy Hospital area. Visit: www.fortsmith.org

SALE EVENTS

Preview the sale lots on Friday throughout the day until feeding time at 5 pm. Give us a call if you want to come by prior to Friday!

Join us for a Friday evening Get-Together – New Venue, New Menu!
6:30 to 10:30 pm at The Bakery District in historic downtown Fort Smith.
It'll be a relaxed and enjoyable event, and kids are certainly welcome.
NCAA Basketball on the BIG SCREEN! Complimentary shuttle service will
be provided from Homewood Suites. (See page 13 for more info.)

Preview the sale lots on Saturday morning starting at 8:30 am. Get a cup
of coffee and a cinnamon roll for your stroll through the pens!

You'll enjoy our Arkansas Country Brunch on Saturday at the ranch,
served from 10:00 am to 12:30 pm.

Grab 'n Go snacks and refreshments will be available throughout the
sale and afterward.

PRE-REGISTER at the settlement desk on Saturday morning to be
sure we have your current information, and to ensure faster check-out!

LOAD-OUT will begin 15 minutes after the conclusion of the sale. If
you're coming back on Sunday, or later in the week, please let us know!

NORTH SIDE TRAILER PARKING has been created for safer and
easier overnight parking for trailers at the ranch. It's now on the NORTH
SIDE of Hwy. 22. East of Hwy. 96 stoplight, turn at the sign. See page 30.

**If we can do anything to help you enjoy
your weekend at Belle Point, just holler!**



It's Easy To Get To Belle Point!

Fort Smith, Arkansas is 4 miles south of
I-40 on the Arkansas-Oklahoma state line.

Flip to page 44 for ranch location, driving
directions, and info on convenient airports
in Fort Smith, Northwest Arkansas and Tulsa.

Experience Fort Smith

www.fortsmith.org

The original gateway to the Wild West, our city was the last stop between
modern civilization and the untamed wilderness of Indian Territory, now
modern day Oklahoma. In the heyday of Fort Smith, a popular saying went,
"There is no law west of St. Louis and no God west of Fort Smith."

Fort Smith played a significant role throughout our nation's history during its frontier days, providing inspiration to the film classic "True Grit," and many other western movies. Judge Isaac C. Parker held court for the Federal Government in the Western District of Arkansas just before the turn of the century. Experience that history firsthand at the Fort Smith National Historic Site. When the new National U.S. Marshals Museum opens it will highlight the 220-year history of the nation's oldest law enforcement agency on the very spot where much of the most dangerous Marshals Service history took place. Downtown Fort Smith is more than a little civilized today – but still lots of fun! You will enjoy excellent restaurants, friendly bars and lively music venues on Garrison Avenue. Tour the Fort Smith Museum of History and browse for antiques and unique shopping. If you like antiques and wonderful old cities make time to visit nearby historic Van Buren too. "The Unexpected" has brought urban contemporary art to downtown. The project has transformed downtown Fort Smith into a world-class destination for urban and contemporary public art. (Visit www.unexpectedfs.com/art)

Welcome!

FRIDAY, March 27

All day

PREVIEW the sale cattle 'til 5 pm. You're welcome any day before the sale too! Please give us a call.

6:30 to 10:30 pm

GET-TOGETHER at The Bakery District, 70 South 7th Street, downtown historic Fort Smith
Read about our new venue and new menu on page 13! Shuttle service provided from Homewood Suites.

SATURDAY, March 28

8:30 am

PREVIEW the sale offering. Get a cup of coffee and a cinnamon roll for your stroll through the pens!

10:00 am – 12:30 pm

Genuine Arkansas Country BRUNCH will be served until 12:30 pm.

12:30 pm

The Pathway to Opportunity AUCTION

Grab 'n Go SNACKS & REFRESHMENTS will be available throughout the sale, and as you checkout!

SALE LOCATION and DRIVING DIRECTIONS

DIRECTIONS TO BELLE POINT RANCH, LAVACA

Look for our famous Budweiser Silo!

- GPS Location: 21002 Hwy. 22, Lavaca, Arkansas, 72941
- Google Maps: Belle Point Ranch, Lavaca, Arkansas

- From I-40 East (ARKANSAS), take Exit 7 for I-540 South. Take Exit 3, turn left at light and follow Hwy. 59 8 miles to Hwy. 22, turn left (east) and go 6 miles to intersection of Hwy. 22 and Hwy. 96.
- From I-40 West (OKLAHOMA), exit #325 at Roland, Oklahoma. Go through Roland, cross Arkansas River bridge, follow Garrison Ave. merge to Rogers Ave./Hwy. 22. Go east 16 miles to intersection of Hwy. 22 and Hwy. 96.
- From Homewood Suites, take Rogers Ave./Hwy. 22 east 9 miles to the intersection of Hwy. 22 and Hwy. 96.

AIR TRAVEL Three Convenient Options

- FORT SMITH Airport (www.fortsmithairport.com) is served by American Eagle to D-FW and Delta to Atlanta. We will provide transportation to and from the Fort Smith Airport, please call the Fort Smith office or sale day phones to make arrangements. Excellent private service is available in Fort Smith, call us for info. The airport is 9.9 miles from the ranch.
- NORTHWEST ARKANSAS Regional Airport (www.nwara.com), Bentonville (near Fayetteville/Springdale) is an EASY 90 minute drive from Fort Smith.
- TULSA International Airport (www.tulsaairports.com) is an EASY two-hour drive from Fort Smith.

new HOTEL HEADQUARTERS

Homewood Suites, 479-452-7100 **Make reservation by March 13 to get the BPR room rate**
Located east of downtown in the area of Airport/Mercy Hospital – 7300 Phoenix Avenue, Fort Smith, Arkansas, 72903

Call the hotel directly to make a reservation, OR visit our website to access a link for online reservation.

new FRIDAY GET-TOGETHER

The Bakery District – see page 13 for details

Located in downtown Fort Smith Historic District – 70 South 7th Street, Fort Smith, Arkansas 72901

Parking is nearby. Complimentary SHUTTLE SERVICE is provided from Homewood Suites

AUCTION STAFF

AUCTIONEER

Col. Matt Sims, Edmond, OK
(405) 641-6081

COTTON & ASSOCIATES (517) 546-6374 Michigan office

Larry Cotton (517) 294-0777 Mike Gothard (540) 894-1055
Ryan Cotton (706) 206-8361 Jerry Crenshaw (703) 244-4767

SALE CONSULTANT

Terry Cotton, St. Joseph, MO (816) 390-3227

RING STAFF

William Harsh, Angus Journal (740) 272-1386
Cas Salley, Oklahoma Cowman (918) 855-3152

BPR CONTACTS

Julie McMahon French Cell/Text: (989) 965-6363
Steve French Cell/Text: (989) 798-8223
Claire Taylor Matlock Cell/Text: (479) 650-4665
Susan McMahon Taylor Office: (479) 782-5579

E-mail: juliefrench@nethawk.com
E-mail: resinex@nethawk.com
E-mail: claire@bellepoint.com
E-mail: susan@bellepoint.com

new NORTH SIDE TRAILER PARKING

Safe overnight parking for trailers is now
located on the NORTH SIDE of Hwy. 22.
East of Hwy. 96 stoplight,
turn at the sign. See page 30!

WATCH & BID
ONLINE



www.CCI.live

Making Sale Day Simple!

**NEW! Videos of feature lots
will be posted by 3/25!**

BELLE POINT Fair and Square GUARANTEE

Because we value your business, Belle Point Ranch puts forth every effort to ensure the integrity of our cattle, our records and our management practices. Should an issue arise with your purchase we ask you to report it to us immediately. If more information is necessary, we will proceed together with a timely and thorough investigation that may involve consulting a licensed veterinarian. Once responsibility is determined, we pledge to address the situation promptly to arrive at an outcome that is fair and square!

HERD HEALTH

- Calves are treated at birth with Multimin 90, at weaning with Multimin 90, Alpha-7/ MB-1, Vira Shield 6. Spring 2020 calves were also treated with Inforce 3 BRSR vaccine.
- Cows and bulls are treated twice each year with Alpha-7/MB-1 and Vira Shield 6 + VL5 HB. VitaFerm® Concept•Aid® vitamin and mineral supplements are utilized 30 days prior to calving through breeding to increase fertility and conception rates of both cows and bulls.
- All sale cattle received the Anaplasmosis vaccine in September, 2019 and again in March, 2020.

PREVIEW THE SALE LOTS

Cattle are available for your inspection at the ranch any time at your convenience. We will appreciate one day's notice if you want to come before Thursday, March 26...please give us a call!

SALE ORDER – Just follow the lot numbers!

The cattle will sell in catalog order starting with Lot 1! Ear tags on the cattle will correspond to the lot numbers in this catalog. Ear tags on calves at side of dam will correspond to dam's number. Footnotes in this catalog have been reduced to the breeding status of the cattle selling, with a few exceptions. Catalog EPDs are current as of 2/19/20. EPDs may change weekly, view updates at www.angus.org.

AFTER SALE CARE & SHIPPING

Sale cattle will be accompanied with proper health certificates for immediate shipment. Belle Point Ranch will care for each lot in the sale for a reasonable amount of time. Please discuss your needs with us prior to the sale, and be sure your plans are noted at the settlement desk.

Truckers believed to be reliable will be available to assist you in making shipping arrangements. We will certainly do our part to help make your shipping arrangements happen! We are no longer able to provide delivery free of charge.

ALL LOTS ARE FULLY INSURED – ADDED VALUE!

Full mortality insurance has been obtained by Belle Point Ranch on all eligible cattle selling on March 28, 2020 with Jerry Gay Insurance Co., American Live Stock, Geneva, Illinois. Coverage in the amount of the purchase price is effective at the fall of the auctioneer's hammer, for a term of 30 days from the day of the sale or until cattle arrive at their destination, whichever is shorter. Calves selling at side of dam will be insured for 25 percent of the purchase price of the lot. Calves under two weeks of age are ineligible for this insurance coverage. However, they are still fully guaranteed by Belle Point Ranch.

If you have a claim or additional insurance needs, contact Stuart Wilson, American Live Stock, Geneva, Illinois, 217-454-9355.

IMPORTANT POLICIES

Breeding & Pregnancy Checking

Females in this sale have been bred AI or exposed to only the bulls listed in the footnote. Bred cows were pregnancy checked by ultrasound on 2/10/20 and 3/19/20. Pregnancy status as of sale day will be confirmed on the Update Sheet.

Safe Females "60 Day" Policy

Buyer must take on the responsibility of closely monitoring a safe female (through heat detection) for the first 60 days after the sale to be certain she stays safe in calf. Belle Point Ranch will offer a "Fair and Square" adjustment to the sale price if a cow is determined by a licensed veterinarian to be "open" within 60 days of the sale. Buyer must contact Belle Point no later than June 1, 2020 to report an open female.

Bull Guarantee

A breeding soundness exam (BSE) will be performed by our veterinarian on all bulls that have reached the maturity recommended for the exam. Bulls declared to be "satisfactory potential breeders" are guaranteed for the upcoming spring breeding season, provided they are maintained at the same standard of nutrition and care received here. Younger bulls are offered with the understanding that they must continue to be developed by the buyer until they reach maturity for a BSE. Should an issue arise with your bull report it to us immediately. We may ask you to return the bull to Belle Point so we can consult our veterinarian for his evaluation of the bull. If the bull's deficiency is determined to be our responsibility, we pledge to address the situation promptly to arrive at an outcome that is fair and square!

Breeding Privileges

Breeding privileges to Belle Point herd sires may be offered on SELECTED FEMALES selling in this sale. The offer of this privilege will be stated on the Update Sheet.

Semen Rights

Belle Point Ranch retains the right to obtain 100 straws of semen per year on any bull sold in this sale (born or unborn) at the cost of production, and to purchase A.I. certificates at AAA cost.

Belle Point Ranch
The David McMahon Family • Lavaca, Arkansas
www.bellepointranch.com

FORT SMITH OFFICE

Office Phone: (479) 782-5579 Office Fax: (479) 782-8210
Mailing Address: P.O. Box 517, Fort Smith, Arkansas 72902

RANCH PHONES – Wed. 3/25 through Sat. 3/28

Ranch Office: (479) 674-5143 Auction Office: (479) 674-5830

*Get in touch with us via
cell/text or e-mail!*

See contacts on page 44.

Belle Point Ranch

The David McMahon Family
P.O. Box 517, Fort Smith, Arkansas 72902
www.bellepointranch.com

PRSRT
FIRST CLASS
U.S. POSTAGE

PAID

Minster, OH 45865
PERMIT NO. 1

The Pathway To *Opportunity*

Saturday
March 28, 2020
12:30 p.m.

CCI
LIVE

Annual Angus Production Sale
at the ranch near Lavaca, Arkansas

